



General Cleaning	Operation
<p>Bristan products are made from premium materials, with hand polished, PVD, EPD or electroplated finishes.</p> <p>Your shower will be regularly cleaned with warm water, a mild pH-neutral liquid soap, and polished with a soft cloth. Any residues from soap, toothpaste, shampoos and shower gels can cause blemishes if not rinsed off straight after use.</p> <p>Household bleaches and cleaners contain harsh chemicals and may damage the surface finish. Avoid using abrasive cloths, scouring pads, scrub sponges, steel wool or anything similar.</p>	

Maintenance - Cartridge Cleaning		
<div>1</div> <p><b>IMPORTANT</b> Isolate the water supply before starting!</p> <p>Remove the handles.</p>	<div>2</div> <p>Gently remove the concealing plate from the wall.</p>	<div>3</div> <p>Unscrew the shrouds. Remove the cartridges and piston.</p>
<div>4</div> <p>Remove any O-rings and soak all components in de-scaler and wash off in clean water. Examine all seals and replace if required. Use WRAS approved silicon based grease on all seals.</p>	<div>5</div> <p>Reverse the installation steps, ensuring the temperature stop is aligned correctly.</p>	<div>6</div> <p>Follow the Temperature Adjustment Steps if required.</p> <p><b>Increase Temperature</b></p> <p><b>Decrease Temperature</b></p>

Notes

Troubleshooting		
Symptom	Cause	Remedy
No flow or low flow rate	Partially closed isolation valve	Open isolation valve.
	Instantaneous water heater cycles on and off as flow rate or pressure is too low.	Increase water flow rate or pressure through system.
	Head of water is below the minimum distance required.	Refer to the specification for the minimum distance required.
	Are the water supply pressures balanced?	If pressures are unbalanced, a pressure reducing valve should be used for optimum performance.
	Hot or cold water being drawn off elsewhere causing pressure changes or instantaneous boiler temperature changes.	Do not use other water outlets when using the shower.
	Airlock or partial blockage in the supply pipework	Flush through pipework and filters to ensure removal of debris and any airlocks.
Maximum Water Temperature too Hot/Cold	Hot/Cold water supply has failed	Check the hot and cold feeds. The shower will not work if either fails.
	Maximum Water Temperature needs adjusting.	Refer to the Temperature Setting section to set your desired maximum temperature.
	Filter/pipe blockage	Flush through pipework and filters to ensure removal of debris and any airlocks.
Outlet Water Temperature too Hot/Cold	Installation conditions outside operating parameters.	Refer to the specification for the minimum distance required.
	Hot water temperature is less than 10°C above the required blend temperature	Adjust hot water temperature or wait for water to reheat if a stored water system is used.
	Instantaneous water not igniting because the water flow rate is too low.	Increase water flow rate through the system. Refer to the Maintenance section to clean/check the cartridge and filters for any damage. Contact your boiler manufacturer.
	Instantaneous water not igniting because the water pressure is too low.	Refer to the specification for system requirements. Increase water pressure through the system. Contact your boiler manufacturer.
Only hot/ cold water from Shower Valve	Inlet water supplies are reversed.	Check the water inlet connections are the correct way around. Hot on the left, Cold on the right when viewed from the front. Rework pipework as necessary.
	Filter/pipe blockage	Flush through pipework and filters to ensure removal of debris and any airlocks.
Water dripping from shower	This is normal for a short time after using the shower.	This is caused by residual water tension, the build up of water in the shower.
	If water continues to drip, possibly due to the cartridge	Remove cartridge and clean, refer to 'Maintenance' section before starting any maintenance.
Shower does not turn on	Closed isolation valve.	Open isolation valve.
	Mains water supply turned off.	Turn on mains water supply.

<h2>Our Guarantee</h2>	
<p>At Bristan, we want to make things as easy as possible for our customers. That's why we offer full guarantees on all our products, effective from the date of purchase, to give you peace of mind.</p> <p>To start your free guarantee simply scan the QR code and register your product. Alternatively visit: <a href="http://www.bristan.com/register">www.bristan.com/register</a>.</p> <p>For any other queries, please call our Customer Service on <b>0330 026 6273</b> where our expert team of advisors will be able to offer you any help and advice.</p> <p>For full guarantee terms and conditions visit <a href="http://www.bristan.com/service-centre/guarantees">www.bristan.com/service-centre/guarantees</a>.</p>	
	
<p><b>Bristan Group Ltd.</b></p> <p><b>UK:</b> Bristan Group, B78 1SG, <b>EU:</b> Masco Europe S.à.r.l., 14 Rue Strachen 69333 Mensdorf, Luxembourg.</p>	<p><b>Customer Service:</b> +44330 026 6273 <b>Web:</b> <a href="http://www.bristan.com">www.bristan.com</a> <b>Email:</b> <a href="mailto:enquire@bristan.com">enquire@bristan.com</a></p> <p><b>A Masco Company</b></p>
	

# BRISTAN

## Installation Instructions & User Guide

Please leave these instructions  
with the end user

FHC ABSQ01 Range (D2)

### Specifications

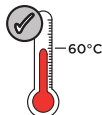
#### Dynamic Water Pressure

Min: 0.2 bar Max: 5.0 bar



Maximum Static Pressure: 10.0 bar

#### Inlet Water Temperature

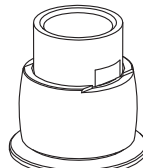


Maximum Hot 60°C

#### IMPORTANT

The inlet hot water must be at  
least 10°C above the require  
blend temperature.

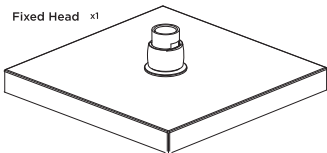
#### Inlet Connections



1/2" BSP (female)

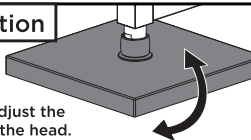
### Pack Contents

Fixed Head x1



#### Operation

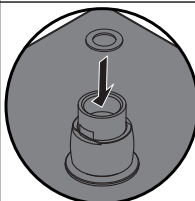
Tilt to adjust the  
angle of the head.



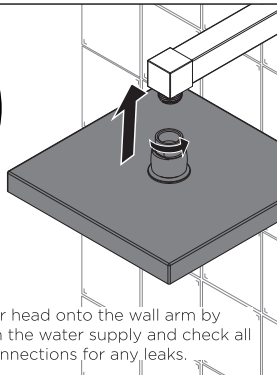
### Installation



Products shown in these instructions are for illustration  
purposes only. Your shower can still be installed and operated by  
following these instructions.



Ensure the washer  
is correctly inserted  
into the fixed head.



Screw the shower head onto the wall arm by  
**HAND ONLY**. Turn on the water supply and check all  
joints and connections for any leaks.

### Prior to Installation

All products manufactured and supplied by Bristan are safe to use provided that they are installed,  
operated and receive regular maintenance in accordance with these instructions.

This product needs to be installed in accordance with, and meet the requirements of The Water Supply (Water  
Fittings) Regulations (Northern Ireland) 2009 and The Water Supply (Water Fittings) (Scotland) Byelaws 2014.  
For full Installation Requirements & Notes (IRN) please visit [www.wrasapprovals.co.uk/approvals-directory](http://www.wrasapprovals.co.uk/approvals-directory)

Isolation valves must be fitted to the inlet water supplies to ensure ease of future maintenance. Before installing this  
product the water supply must be thoroughly flushed in order to remove any swarf, solder etc. Full access must be  
made available for future maintenance/servicing purposes.

If power tools are used do not forget to: - Wear eye protection - Unplug equipment after use

This product must not be modified in any way as this will invalidate the guarantee.

### Spare Parts



To replace any spare  
parts for your tap, why  
not scan the QR Code or  
visit [www.bristan.com](http://www.bristan.com)  
and search for  
your product.

# Cleaning

## General Cleaning

Bristan products are made from premium materials, with hand polished, PVD, EPD or electroplated finishes. Your product should be regularly cleaned with warm water, a mild pH-neutral liquid soap, and polished with a soft cloth. Any residues from soap, toothpaste, shampoos and shower gels can cause blemishes if not rinsed off straight after use.

Household bleaches and cleaners contain harsh chemicals and may damage the surface finish. Avoid using abrasive cloths, scouring pads, scrub sponges, steel wool or anything similar.

## Cleaning The Shower Head

Your Bristan shower head is equipped with rub-clean nozzles for easy cleaning. Simply rub your fingers across the rubber spray jets regularly and before you turn the shower on to remove and scale or debris.

The hardness of the water in your area will determine how often you should clean your shower head. Build up of scale in particularly hard water areas combined with constant use means you may need to clean your shower head weekly. To ensure continued performance, the shower head needs to be regularly de-scaled.

## Contact Us

**Bristan Group Ltd.**  
**A Masco Company**

**BRISTAN**

Part of **BRISTAN GROUP**

**UK:** Bristan Group,  
Pooley Hall Drive,  
Birch Coppice Business Park,  
Dordon, Tamworth  
B78 1SG.

**EU:** Masco Europe S.à.r.l.  
14 Rue Strachen  
6933 Mensdorf  
Luxembourg

**Email Us:** [enquire@bristan.com](mailto:enquire@bristan.com)  
**Website:** [www.bristan.com](http://www.bristan.com)  
**Call Us:** +44330 026 6273

## Our Guarantee

At Bristan, we want to make things as easy as possible for our customers. That's why we offer solid guarantees on all our products, effective from the date of purchase, to give you peace of mind.

To start your free guarantee simply scan the QR code and register your product.  
Alternatively visit [www.bristan.com/register](http://www.bristan.com/register).

For any other queries, please call our Customer Service on 0330 026 6273 where our expert team of advisors will be able to offer you any help and advice.  
For full guarantee terms and conditions visit [www.bristan.com/service-centre/guarantees](http://www.bristan.com/service-centre/guarantees).



# BRISTAN

## Installation Instructions & User Guide

Please leave these instructions  
with the end user

ARM WASQ01 Range (D6)

### Specifications

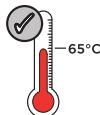
#### Dynamic Water Pressure

Min: 0.2 bar Max: 5.0 bar



Maximum Static Pressure: 10.0 bar

#### Inlet Water Temperature



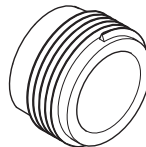
Maximum Hot 65°C

#### IMPORTANT

The inlet hot water must be at  
least 10°C above the require  
blend temperature.



#### Inlet Connections



1/2" BSP

### Pack Contents

Shroud x1



Backnut x1



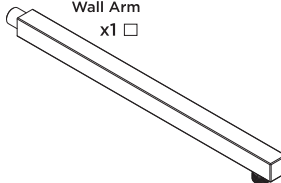
Rubber  
Washer

x1



Wall Arm

x1



### Tools Required for Installation



Pipe Cutter



Pencil



Adjustable Spanner



Drill



PTFE Tape



Safety  
Goggles



Electronic Detector

### Prior to Installation

All products manufactured and supplied by Bristan are safe to use provided that they are installed, operated and receive regular maintenance in accordance with these instructions.

This product needs to be installed in accordance with, and meet the requirements of The Water Supply (Water Fittings) Regulations (Northern Ireland) 2009 and The Water Supply (Water Fittings) (Scotland) Byelaws 2014. For full Installation Requirements & Notes (IRN) please visit [www.wrasapprovals.co.uk/approvals-directory](http://www.wrasapprovals.co.uk/approvals-directory)

Isolation valves must be fitted to the inlet water supplies to ensure ease of future maintenance. Before installing this product the water supply must be thoroughly flushed in order to remove any swarf, solder etc. Full access must be made available for future maintenance/servicing purposes.

If power tools are used do not forget to: - Wear eye protection - Unplug equipment after use

This product must not be modified in any way as this will invalidate the guarantee.

### Spare Parts



To replace any spare  
parts for your tap, why  
not scan the QR Code or  
visit [www.bristan.com](http://www.bristan.com)  
and search for  
your product.

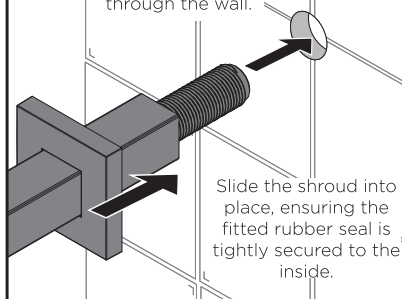
# Installation



PLEASE NOTE - Products shown in these instructions are for illustration purposes only. Your product can still be installed by following these instructions.

1

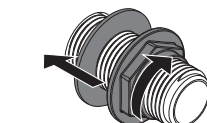
Thread the arm through the wall.



Slide the shroud into place, ensuring the fitted rubber seal is tightly secured to the inside.

2

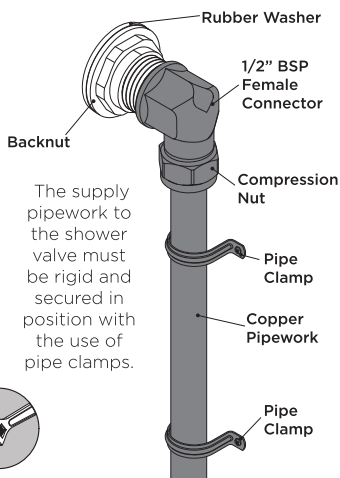
Place the rubber washer followed by the backnut onto the threaded connection.



Slide the washer towards the wall and tighten the backnut.

3

Connect the outlet pipework to the shower arm using a suitable connector (not supplied).

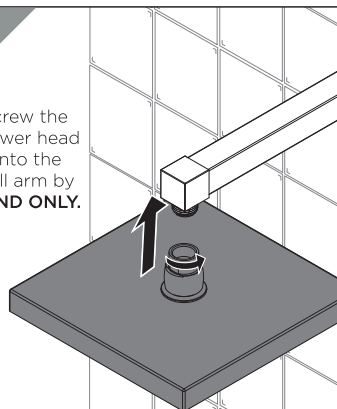


The supply pipework to the shower valve must be rigid and secured in position with the use of pipe clamps.



4

Screw the shower head onto the wall arm by **HAND ONLY**.



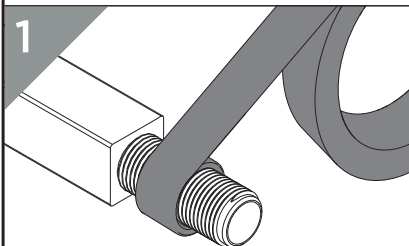
Turn on the water supply and check all joints and connections for any leaks.

# Alternative Installation



PLEASE NOTE - Products shown in these instructions are for illustration purposes only. Your riser outlet can still be installed by following these instructions.

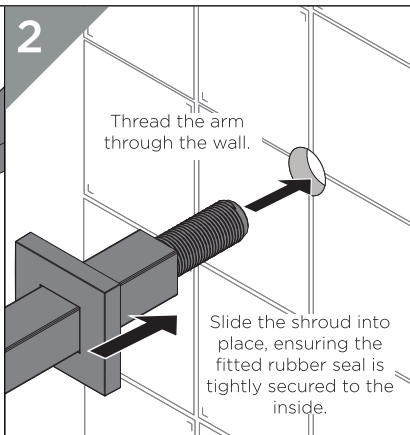
1



Use a suitable sealant that is compliant with UK Water Regulations around the thread.



2

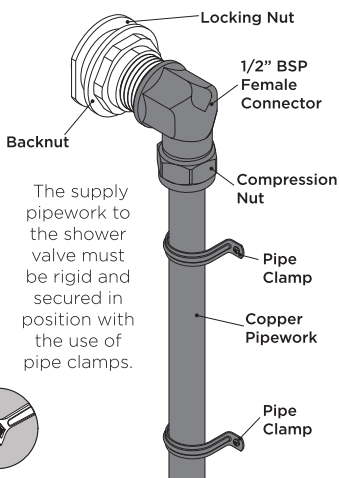


Thread the arm through the wall.

Slide the shroud into place, ensuring the fitted rubber seal is tightly secured to the inside.

3

Connect the outlet pipework to the shower arm using a suitable connector (not supplied).

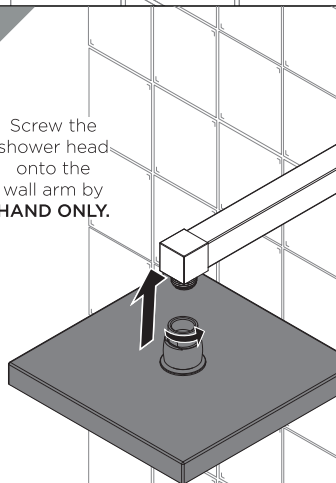


The supply pipework to the shower valve must be rigid and secured in position with the use of pipe clamps.



4

Screw the shower head onto the wall arm by **HAND ONLY**.



Turn on the water supply and check all joints and connections for any leaks.

# Cleaning

## General Cleaning

Bristan products are made from premium materials, with hand polished, PVD, EPD or electroplated finishes. Your product should be regularly cleaned with warm water, a mild pH-neutral liquid soap, and polished with a soft cloth. Any residues from soap, toothpaste, shampoos and shower gels can cause blemishes if not rinsed off straight after use.

Household bleaches and cleaners contain harsh chemicals and may damage the surface finish. Avoid using abrasive cloths, scouring pads, scrub sponges, steel wool or anything similar.

## Cleaning The Shower Head

The hardness of the water in your area will determine how often you should clean your shower head. Build up of scale in particularly hard water areas combined with constant use means you may need to clean your shower head weekly. To ensure continued performance, the shower head needs to be regularly de-scaled.

## Contact Us

**Bristan Group Ltd.**  
**A Masco Company**

**BRISTAN**

Part of **BRISTAN GROUP**

**UK:** Bristan Group,  
Pooley Hall Drive,  
Birch Coppice Business Park,  
Dordon, Tamworth  
B78 1SG.

**EU:** Masco Europe S.à.r.l.  
14 Rue Strachen  
6933 Mensdorf  
Luxembourg

**Email Us:** [enquire@bristan.com](mailto:enquire@bristan.com)  
**Website:** [www.bristan.com](http://www.bristan.com)  
**Call Us:** +44330 026 6273

## Our Guarantee

At Bristan, we want to make things as easy as possible for our customers. That's why we offer solid guarantees on all our products, effective from the date of purchase, to give you peace of mind.

To start your free guarantee simply scan the QR code and register your product.  
Alternatively visit [www.bristan.com/register](http://www.bristan.com/register).

For any other queries, please call our Customer Service on 0330 026 6273 where our expert team of advisors will be able to offer you any help and advice.

For full guarantee terms and conditions visit [www.bristan.com/service-centre/guarantees](http://www.bristan.com/service-centre/guarantees).





# BRISTAN

## Installation Instructions & User Guide

Please leave these instructions  
with the end user

Product Code: C WOSQ02 C (D2)

### Specifications

#### Working Pressure



Min: 0.2 bar Max: 5.0bar

Maximum Static Pressure: 10.0 bar

#### Tools You'll Need



Drill



Pipe Slice



Detector



Adjustable spanner

#### Inlet Connections



15mm Compression via  
Wall Mount

### Prior to Installation

All products manufactured and supplied by Bristan are safe provided they are installed, used correctly and receive regular maintenance in accordance with these instructions.

Isolation valves **must** be fitted to the inlet water supplies to ensure ease of future maintenance.

This product **must** not be modified in any way as this will invalidate the guarantee.

Full access must be made available for future maintenance / servicing purposes.

This product needs to be installed in accordance with, and meet the requirements of the Water Supply (Water Fittings) Regulations 1999 and Scottish Byelaws 2004.

Before starting any installation please consider the following: before drilling into walls, check that there are no hidden electrical wires, cables or water supply pipes. This can be checked with the aid of an electronic detector.

If power tools are used do not forget to:

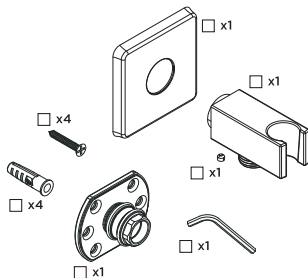
- Wear eye protection
- Unplug equipment after use

Warning: It is essential that you thoroughly flush through the pipework in order to remove any remaining swarf, solder, etc before using this product. Failure to carry out this procedure could cause problems or damage.

If in doubt, contact a registered plumber or your Local Water Authority or the Secretary of the Institute of Plumbing, address as follows:-

The Institute of Plumbing,  
64 Station Lane,  
Hornchurch,  
Essex,  
RM12 6NB. Tel: 0708 472791

### Pack Contents



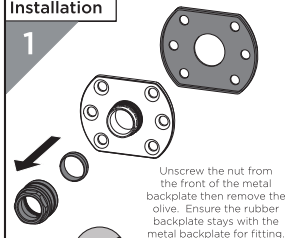
### Spare Parts

To replace any spare parts for your product why not scan the QR Code or visit [www.bristan.com](http://www.bristan.com) and search for your product.

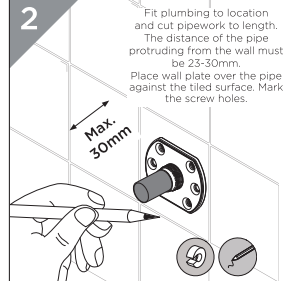


### Installation

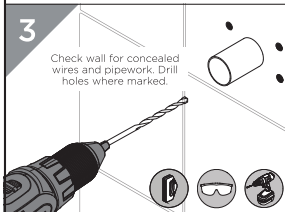
1



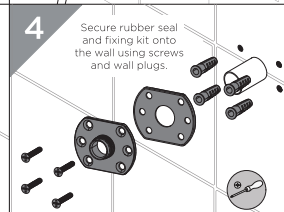
2



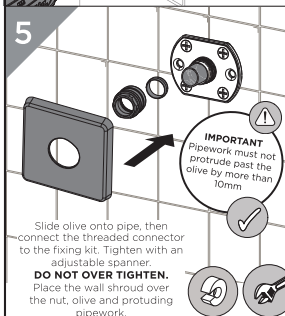
3



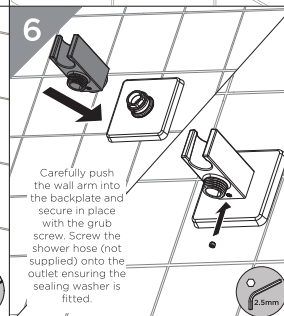
4



5



6



## Notes

Please use this space for any notes you or your installer may have regarding the installation/plumbing of this product.

## General Cleaning

Bristan products are made from premium materials, with hand polishing and electroplated, PVD or EPD finishes.

Your taps, shower and accessories should be regularly cleaned with warm water, a mild pH-neutral liquid soap, and polished with a soft cloth. Any residues from soap, toothpaste, shampoos and shower gels can cause blemishes if not rinsed off straight after use.

Household bleaches and cleaners contain harsh chemicals and may damage the surface finish.

Avoid using abrasive cloths, scouring pads, scrub sponges, steel wool or anything similar.

## Contact Us

**BRISTAN**Part of **BRISTAN GROUP**

**Bristan Group Ltd.**  
**A Masco Company**

**UK:** Bristan Group,  
Pooley Hall Drive,  
Birch Coppice Business Park,  
Dordon, Tamworth  
B78 1SG.

**EU:** Masco Europe S.à.r.l.  
14 Rue Strachen  
69333 Mensdorf  
Luxembourg

**Email Us:** [enquire@bristan.com](mailto:enquire@bristan.com)  
**Website:** [www.bristan.com](http://www.bristan.com)  
**Call Us:** +44330 026 6273

## Our Guarantee

At Bristan, we want to make things as easy as possible for our customers. That's why we offer solid guarantees on all our products, effective from the date of purchase, to give you peace of mind.

To start your free guarantee simply scan the QR code and register your product. Alternatively visit **[www.bristan.com/register](http://www.bristan.com/register)**.

For any other queries, please call our Customer Service on 0330 026 6273 where our expert team of advisors will be able to offer you any help and advice.

For full guarantee terms and conditions visit **[www.bristan.com/service-centre/guarantees](http://www.bristan.com/service-centre/guarantees)**.

