

# BRISTAN

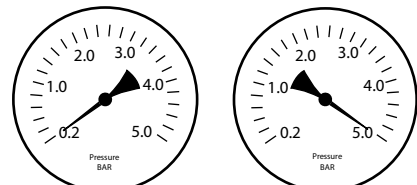
## Installation Instructions & User Guide

Please leave these instructions  
with the end user

Product Code: WOSQR Range (D1)

### Specifications

#### Working Pressure



Min: 0.2 bar

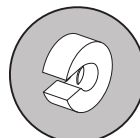
Max: 5.0bar

Maximum Static Pressure: 10.0 bar

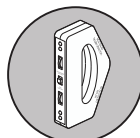
#### Tools You'll Need



Drill



Pipe Slice

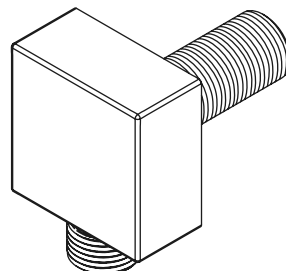


Detector



Adjustable spanner

#### Inlet Connections



1/2" BSP

### Prior to Installation

All products manufactured and supplied by Bristan are safe provided they are installed, used correctly and receive regular maintenance in accordance with these instructions.

Isolation valves **must** be fitted to the inlet water supplies to ensure ease of future maintenance.

This product **must** not be modified in any way as this will invalidate the guarantee.

Full access must be made available for future maintenance / servicing purposes.

This product needs to be installed in accordance with, and meet the requirements of the Water Supply (Water Fittings) Regulations 1999 and Scottish Byelaws 2004.

Before starting any installation please consider the following: before drilling into walls, check that there are no hidden electrical wires, cables or water supply pipes. This can be checked with the aid of an electronic detector.

If power tools are used do not forget to:

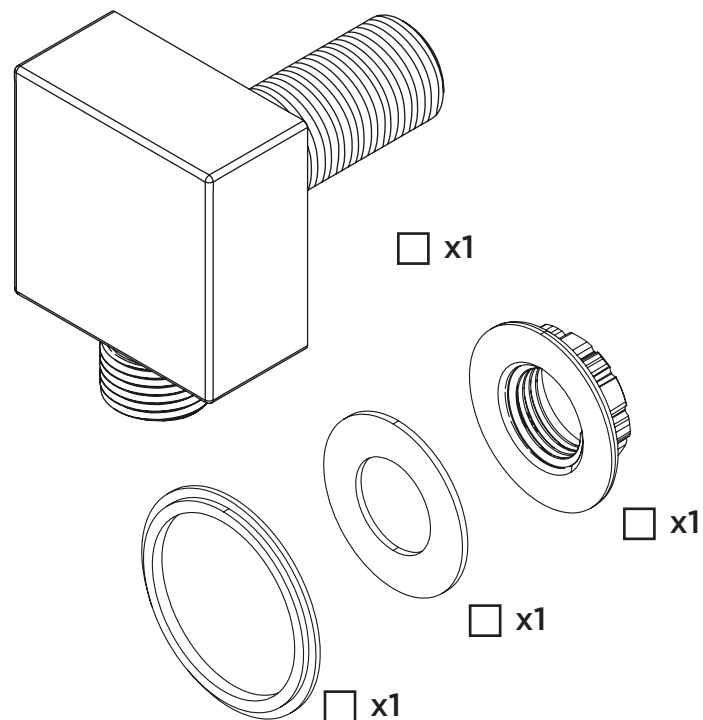
- Wear eye protection
- Unplug equipment after use

Warning: It is essential that you thoroughly flush through the pipework in order to remove any remaining swarf, solder, etc before using this product. Failure to carry out this procedure could cause problems or damage.

If in doubt, contact a registered plumber or your Local Water Authority or the Secretary of the Institute of Plumbing, address as follows:-

The Institute of Plumbing,  
64 Station Lane,  
Hornchurch,  
Essex,  
RM12 6NB, Tel: 01708 472791

### Pack Contents



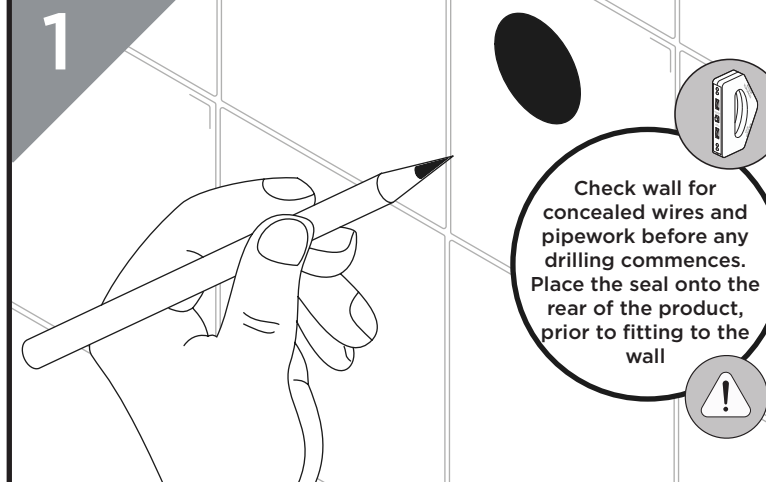
### Spare Parts

To replace any spare parts for your product why not scan the QR Code or visit [www.bristan.com](http://www.bristan.com) and search for your product.



### Installation

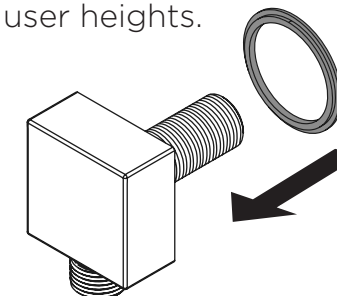
1



Check wall for concealed wires and pipework before any drilling commences. Place the seal onto the rear of the product, prior to fitting to the wall

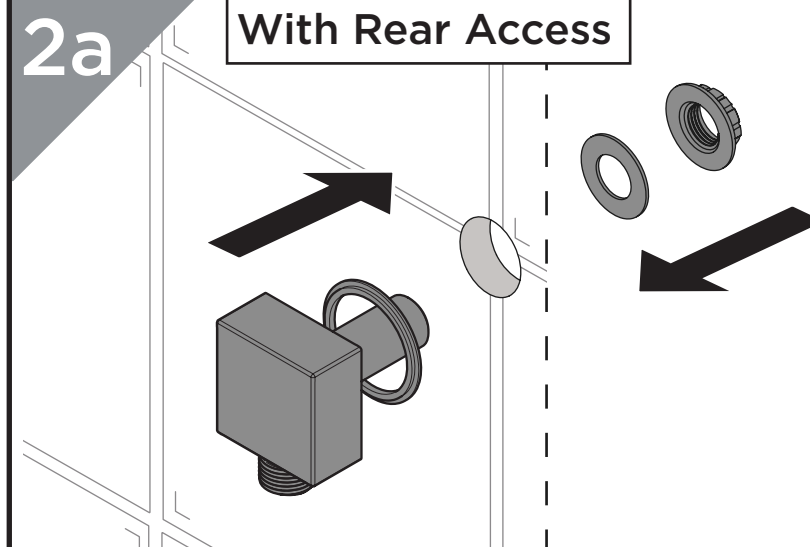
Choose the location for the wall outlet and create a 25-30mm hole in the wall.

Ensure your hose can cover the distance needed from the wall outlet to your shower kit. Allow for the adjustability of your shower kit to cover all user heights.



2a

#### With Rear Access



Fit the wall outlet, ensuring the washers are fitted either side of the wall.

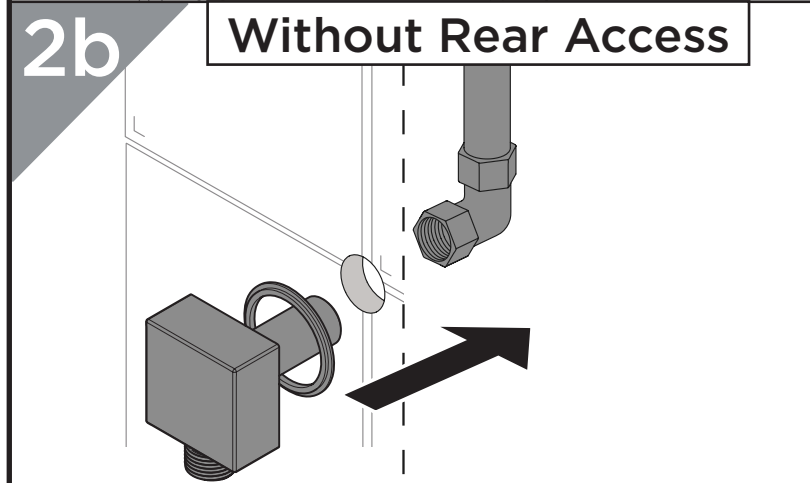
Screw on the backnut.

**DO NOT OVERTIGHTEN**

Connect the water supply pipework to the outlet.

2b

#### Without Rear Access



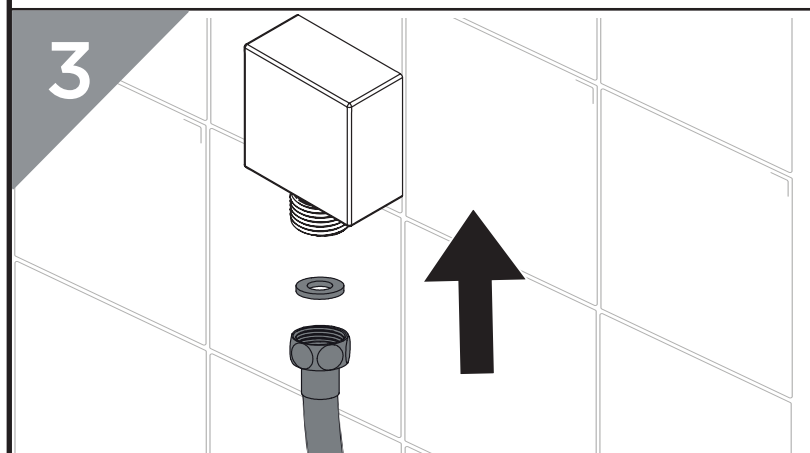
Backnut and washer not required for this method

Plumb the copper pipework to the desired location.

Screw the wall outlet into the 1/2" female connection, using a suitable thread sealant.

Ensure the rubber seal is fitted to the back of the wall outlet.

3



Screw the shower hose (not supplied) onto your wall outlet.

Turn on water supply and check all joints and connections for any leaks

Notes

Please use this space for any notes you or your installer may have regarding the installation/plumbing of this product.

General Cleaning

Bristan products are made from premium materials, with hand polishing and electroplated, PVD or EPD finishes.

Your taps, shower and accessories should be regularly cleaned with warm water, a mild pH-neutral liquid soap, and polished with a soft cloth. Any residues from soap, toothpaste, shampoos and shower gels can cause blemishes if not rinsed off straight after use.

Household bleaches and cleaners contain harsh chemicals and may damage the surface finish.  
Avoid using abrasive cloths, scouring pads, scrub sponges, steel wool or anything similar.

Contact Us

**BRISTAN**

Part of **BRISTAN GROUP**

**Bristan Group Ltd.**  
**A Masco Company**

**UK:** Bristan Group,  
Pooley Hall Drive,  
Birch Coppice Business Park,  
Dordon, Tamworth  
B78 1SG.

**EU:** Masco Europe S.à.r.l.  
14 Rue Strachen  
6933 Mensdorf  
Luxembourg

**Email Us:** [enquire@bristan.com](mailto:enquire@bristan.com)  
**Website:** [www.bristan.com](http://www.bristan.com)  
**Call Us:** +44330 026 6273

Our Guarantee

At Bristan, we want to make things as easy as possible for our customers. That's why we offer solid guarantees on all our products, effective from the date of purchase, to give you peace of mind.

To start your free guarantee simply scan the QR code and register your product. Alternatively visit **[www.bristan.com/register](http://www.bristan.com/register)**.

For any other queries, please call our Customer Service on 0330 026 6273 where our expert team of advisors will be able to offer you any help and advice.

For full guarantee terms and conditions visit **[www.bristan.com/service-centre/guarantees](http://www.bristan.com/service-centre/guarantees)**.

