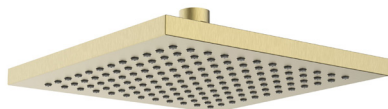


FHC ABSQ01 BB

SHOWER ACC Shower ABS 200mm Square Fixed Head Brushed Brass



Features:

- Complete with swivel joint for angle adjustment

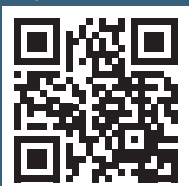
Product Certifications:



WRAS Cert. Number: 2301403
WRAS Expiry Date: 30/04/2028



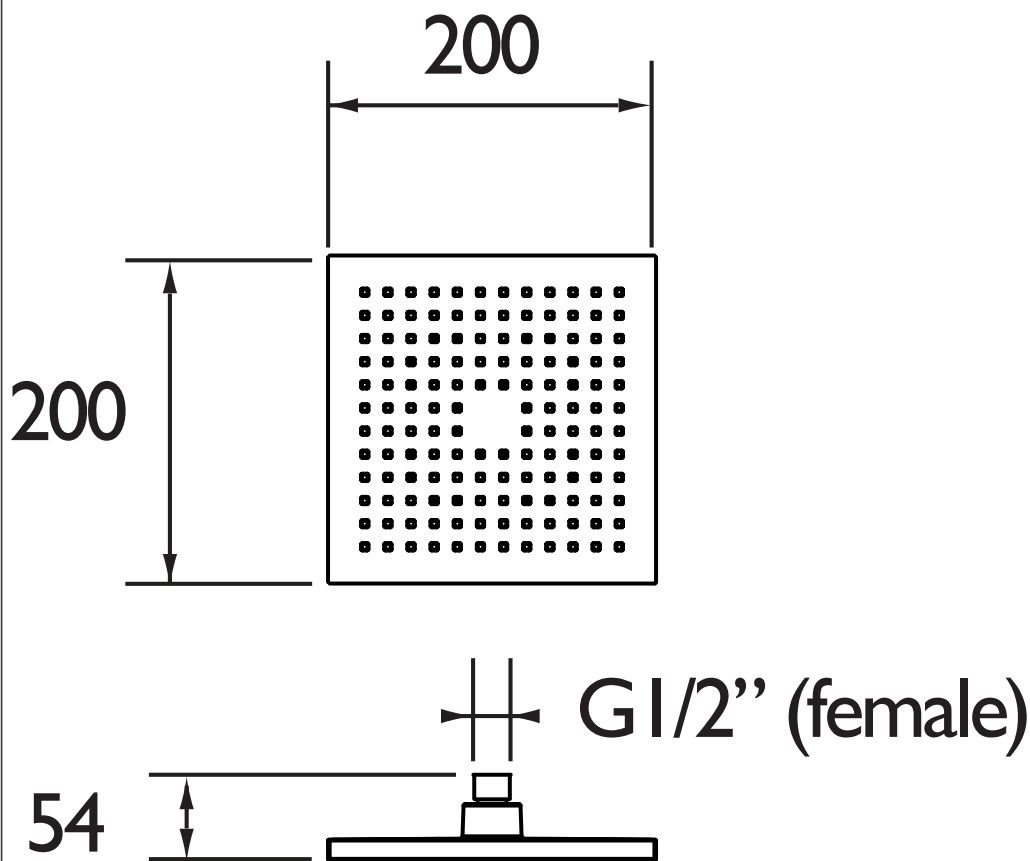
For more products, visit our website:
<http://www.bristan.com>



Specification

Finish/Colour:	Brushed Brass
Main Construction Material:	ABS
Shower Head Type:	Square Fixed Head
Rub Clean Handset:	Yes
Mounting Type:	Ceiling
Plumbing System Suitability:	Suitable for all plumbing systems
Minimum Dynamic Pressure (bar):	0.2 bar
Maximum Dynamic Pressure (bar):	5 bar
Maximum Static Pressure (bar):	10 bar
Maximum Hot Water Supply Temperature °C:	60
Connection Inlet:	G 1/2"
Isolation Included:	No
What's Included:	1 x Shower Head, 1 x Fitting Instructions

Dimensions (measurements in mm)



Flow Rates (l/min)

System Pressure (bar)	0.2	0.5	1	2	3	5
Through Fixed Head (mixed)	5.2	8.2	11.6	16.4	20.1	25.9

TECHNICAL DATA SHEET



BRISTAN

D1

Bristan, Birch Coppice Business Park, Dordon, Tamworth, B78 1SG. Web Site: www.bristan.com Telephone: 0330 026 6273. Email: enquire@bristan.com.

* - **Non-chrome product finishes carry a 3 year guarantee on finish.** See www.bristan.com/guarantees for more information. The information contained on this page was correct at date of issue. Listed flow rates are indicative for the product. Different plumbing systems and flow regulators can produce higher or lower results. Fitting Dimensions are provided as a guide only. Some variation may occur due to manufacturing tolerances. Bristan pursues a policy of continuous improvement in design and performance of its products and so reserves the right to change specifications without prior notice.