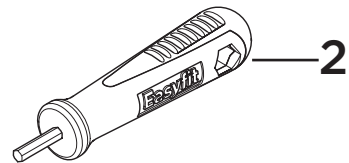
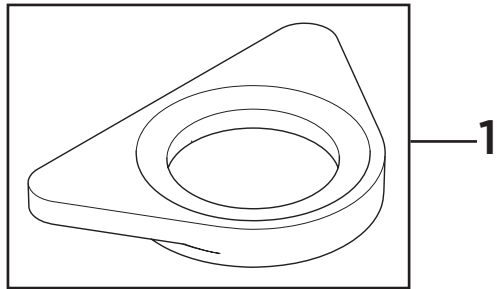
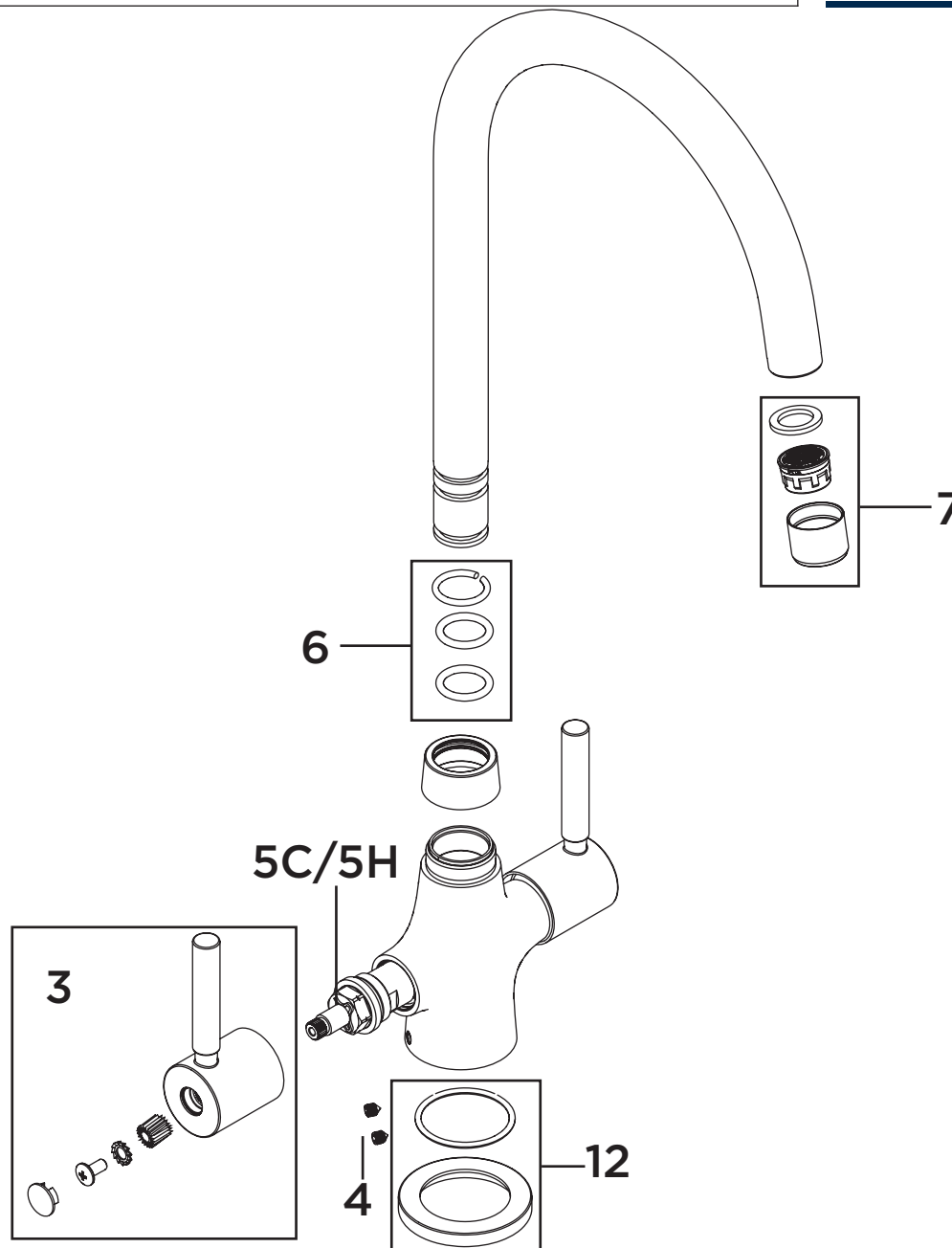


Product Code: MZ SNK EF RANGE
Revision: D7

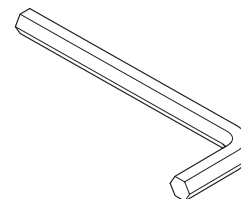
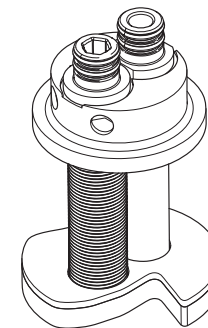
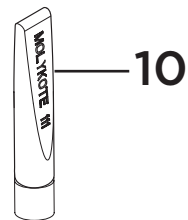
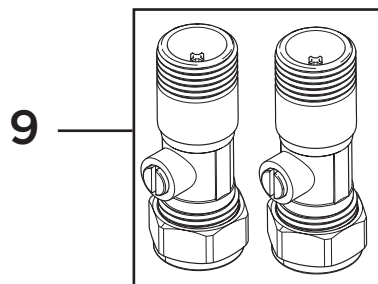


1	Reinforcing Plate
2	EasyFit Tool
3	Handle Assembly inc. Spline Adaptors (Pair)
4	M5 x 6mm Grub Screw
5C	1/2" Clockwise Cold Ceramic Disc Valve
5H	1/2" Anti-Clockwise Hot Ceramic Disc Valve
6	Spout Seals Kit
7	Outlet Assembly
8	EasyFit Pack
9	Isolation Valves (Pair)
10	Molykote Grease
11	1/2" BSP Flexible Tails (Pair)
12	Plinth & O'Ring

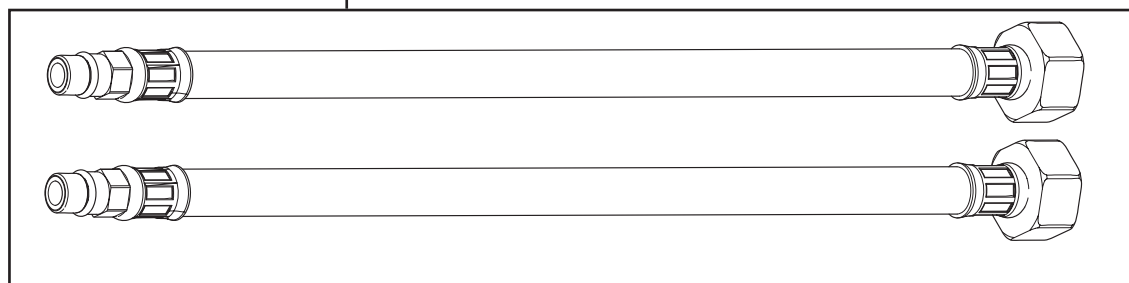


Product Code: MZ SNK EF RANGE
Revision: D6

8



11



1	Reinforcing Plate
2	EasyFit Tool
3	Handle Assembly inc. Spline Adaptors (Pair)
4	M5 x 6mm Grub Screw
5C	1/2" Clockwise Cold Ceramic Disc Valve
5H	1/2" Anti-Clockwise Hot Ceramic Disc Valve
6	Spout Seals Kit
7	Outlet Assembly
8	EasyFit Pack
9	Isolation Valves (Pair)
10	Molykote Grease
11	1/2" BSP Flexible Tails (Pair)