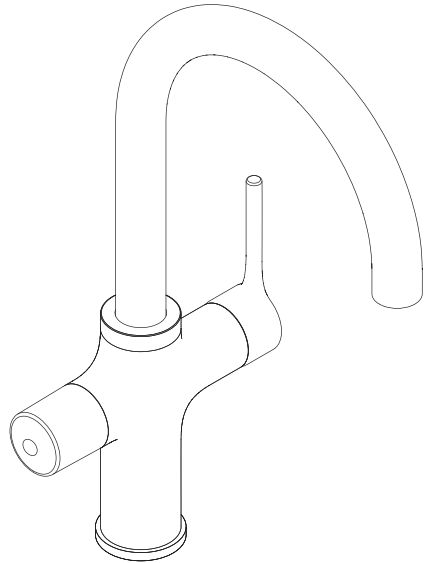

BRISTAN

TAPS & SHOWERS

Installation Instructions and User Guide

Gallery Rapid Boiling
4-in-1 Sink Mixer Chrome



Models Covered:

GLL RAPSNK4 C

**Please keep this booklet for future
reference.**

Installer, when you have read these
instructions please ensure you leave
them with the user.

Contents

Thank you for choosing Bristan, the UK's leading tap and shower expert.


We have designed this product to be easy to install and use. It has also been assessed to all of the relevant British Standards, and conforms to CE Regulations.

These instructions are for your guidance to a safe and successful installation, so please read them thoroughly and retain for future reference.


Contents

• Important Safety Information	3-4
• Specification	5
• Installation Requirements	6-7
• Installation	8-9
• Preparation for Use	9
• Operation	10-11
• General Cleaning	11
• Maintenance	12-13
• Troubleshooting	14
• Notes	15

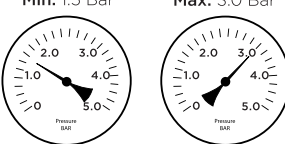
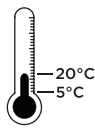
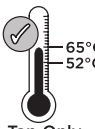
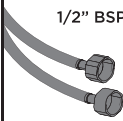
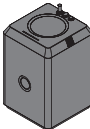
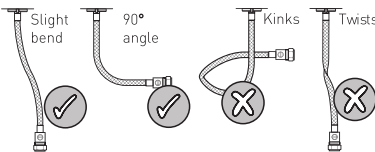
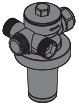

Important Safety Information

- **Please read these instructions thoroughly and retain for future use.**
- All products manufactured and supplied by Bristan are safe provided they are installed, used correctly and receive regular maintenance in accordance with these instructions.
- **If you are in any doubt about your ability to install this product safely you must employ the services of an experienced qualified plumber/electrician.**
-  **Warning:** The Boiling Water Tank is intended for domestic use only. Do not install the unit outdoors or where it might be subjected to damp or freezing conditions.
- Check the power rating of the Boiling Water Tank is suitable for the power rating of the electrical circuit that it is being installed on
- Check that no parts are missing or damaged on the Boiling Water Tank or Tap as per the instructions. If parts are missing or damaged, do not install and contact Customer Services
- Do not install this Boiling Water Tank in a room/environment without adequate ventilation or an extractor fitted. This is required to prevent condensation forming within the unit.
- This Boiling Water Tank is only intended for use with the Boiling Water Tap supplied. Using this tank with any other tap will invalidate the guarantee.
- Do not attempt to open or modify the Boiling Water Tank as this will invalidate the guarantee.

Important Safety Information

- The filter supplied has to be replaced every six months for protection of your Boiling Water Tank. Failure to do so will invalidate your guarantee.
- To protect against electric shock, do not place the cord, plugs or Boiling Water Tank near or in water/other liquids. Do not operate the appliance or touch the plug with wet hands.
- The power lead is an integral part of the Boiling Water Tank. If the power lead is damaged, stop using immediately and contact Customer Services. Do not attempt to fix as this can result in serious injury or death.
- Do not remove the earthing terminal, reconstruct the plug, or disassemble the main box or any part for the power.
- The appliance must be installed vertically with the inlet and outlet connections at the top of the unit.
-  **Warning:** This appliance is not intended for use by children or persons with reduced physical, sensory or mental capabilities or lack of experience and knowledge; unless they have been given supervision or instruction concerning use of appliance in a safe way, and understand the hazards involved.
- Children should not play with the appliance. Cleaning and maintenance should not be undertaken by children without supervision.
- Turn off all controls before unplugging. Unplug the Boiling Water Tank by grasping the plug, not the cable.

Specification

Specifications		Inlet Water Temperatures		Inlet Connections	Tank Capacity						
Working Pressures Min: 1.5 Bar Max: 3.0 Bar  Maximum Static Pressure: 3.0 Bar		Cold Water Supply  Min: 5°C Max: 20°C IMPORTANT Suitable for high pressure systems only	Hot Water Supply  Tap Only Min: 52°C Max: 65°C 4 Temperature Settings Min: 80°C Max: 98°C	1/2" BSP 	3L 						
Recommended Usage <table border="1"> <tr> <td>Domestic </td> <td>Heavy </td> </tr> <tr> <td>Light </td> <td>Healthcare </td> </tr> <tr> <td>Commercial </td> <td></td> </tr> </table>		Domestic 	Heavy 	Light 	Healthcare 	Commercial 		Flexible Tails 		Supply Requirements The Pressure Reducing Valve (PRV) supplied is pre-set at 3bar and is required on the Domestic Cold Supply. 	
Domestic 	Heavy 										
Light 	Healthcare 										
Commercial 											
				Electrical Requirements  220-240V AC 2.0kW 50/60 Hz- IPX3 Protection Conforms to CE Regulations							

Prior to Installation

All products manufactured and supplied by Bristan are safe to use provided they are installed, operated correctly and receive regular maintenance in accordance with these instructions.

This product has been designed to comply with the Water Supply (Water Fittings) Regulations 1999 and current bylaws. For full Installation Requirements & Notes (IRN) please visit wras.co.uk/directory.

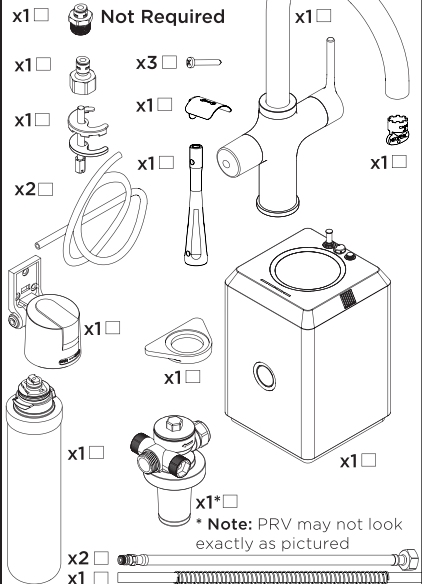
Remove all packaging and check the contents for damage before starting any installation.

Fitting isolation valves (not supplied) to the inlet feeds is required as close as is practical to the inlet connections for ease of maintenance.

Before installing this product the water supply must be thoroughly flushed in order to remove any swarf, solder etc.

Ensure an electric socket is near the place of installation; if a socket needs to be installed, please request the services of a qualified electrician.

Pack Contents



Tools You'll Need



Pencil



Flat-head Screwdriver



Drill



Cross-head Screwdriver



Pipe Cutter



Adjustable Spanner



Pipe & Wire Detector



Pliers

Need help? Give us a call on **0330 026 6273** and speak to one of our trained advisors.

Installation Requirements

Positioning the Boiling Water Tank

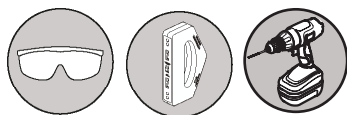
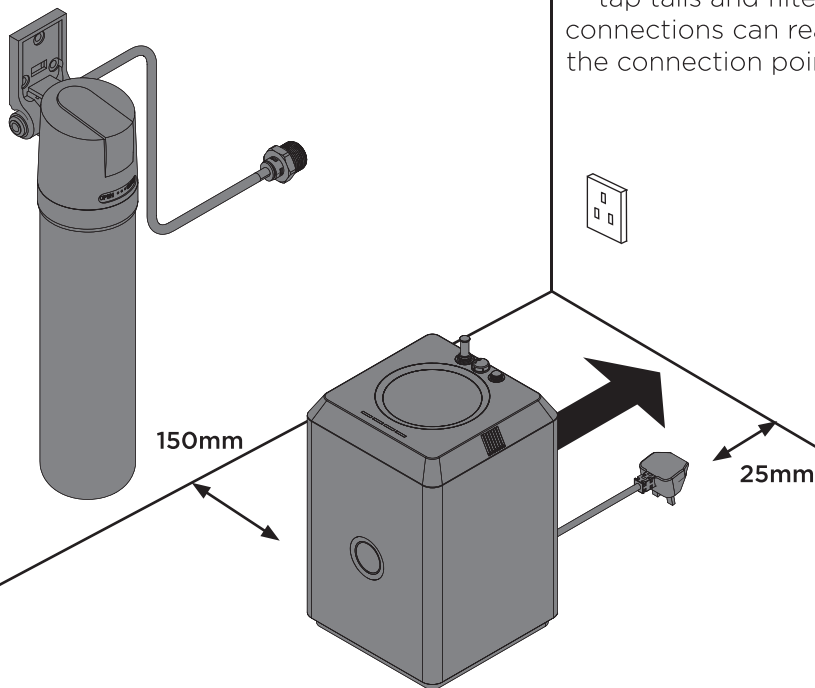
Place the tank in a suitable, well ventilated location that will not fall below 0°C.

Ensure that the tank is installed vertically on a level surface with adequate space around the tank. Keep away from direct sunlight.

We recommend installing a Drain Pan and waste (not supplied) to protect against water damage and for ease of emptying the tank.

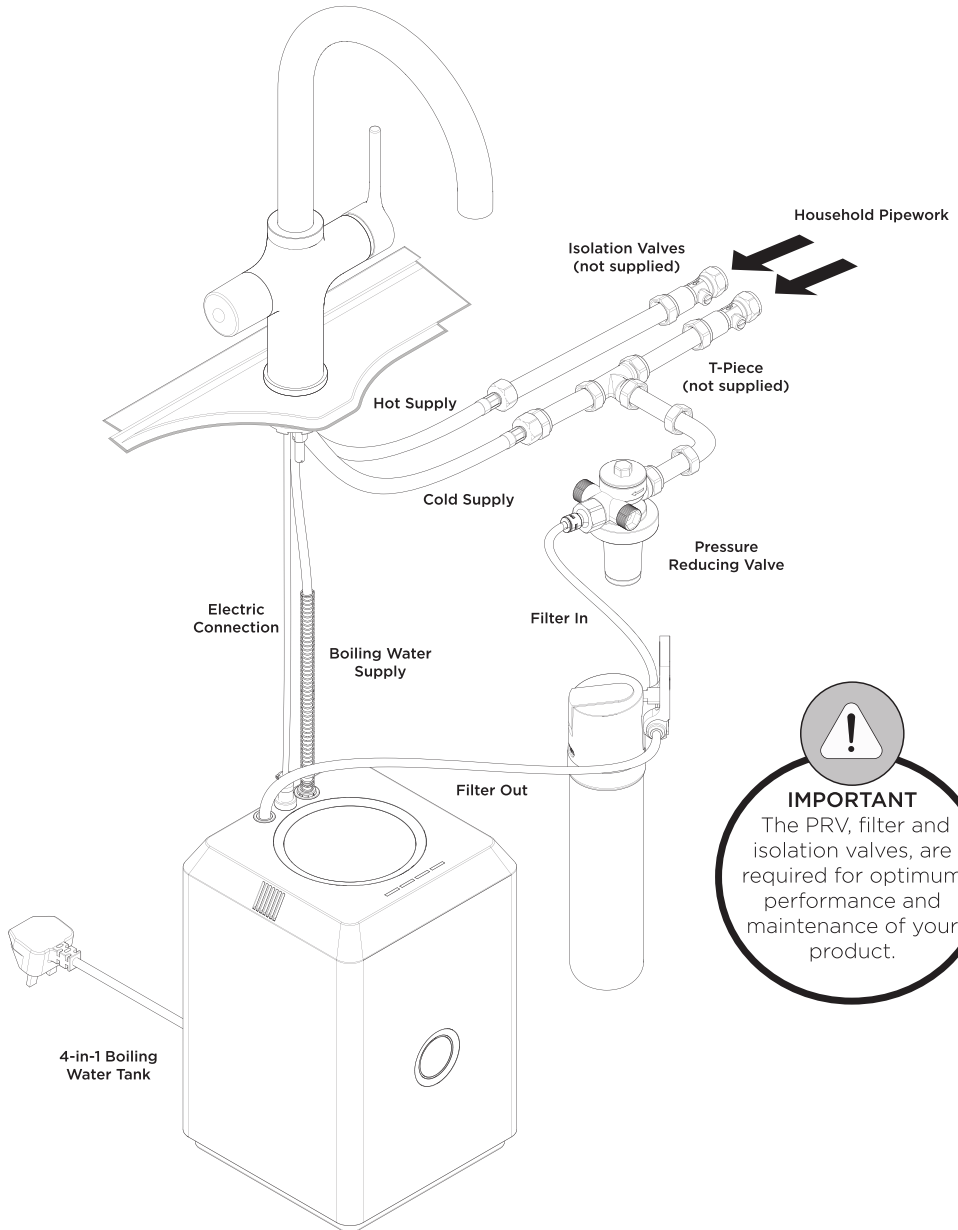
Also ensure that the Filter is in an easily accessible place for replacement purposes.

Ensure that the tap tails and filter connections can reach the connection points.



Installation Requirements

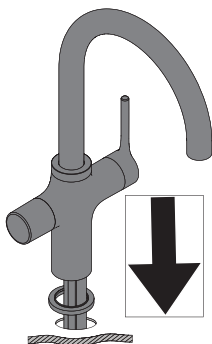
Connection Diagram



Installation

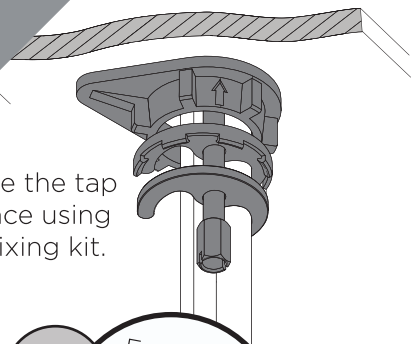
1

Feed the pipes through the sink hole and place the tap body.



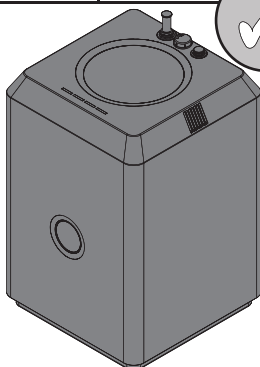
2

Secure the tap in place using the fixing kit.



3

Position the Boiling Water Tank in a suitable location. (See Installation Requirements).



Ensure the filter is easily accessible for filter replacements.



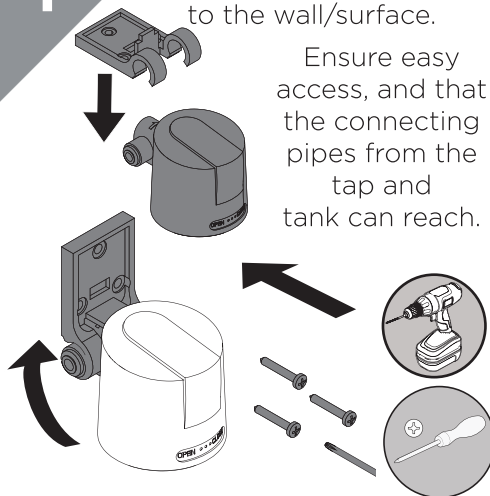
Ensure the tap tails and cables can reach connection points.



4

Fix the filter mounting bracket to the wall/surface.

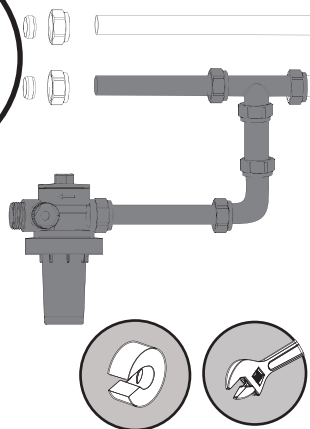
Ensure easy access, and that the connecting pipes from the tap and tank can reach.



5

IMPORTANT
A single check valve on the cold supply is required as per IRN R150.

Plumb the domestic pipework to the location, splitting off the cold supply.



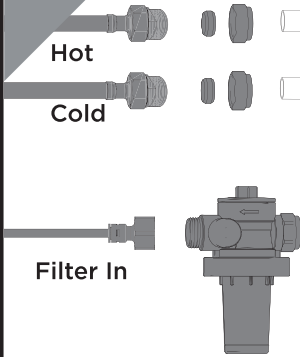
IMPORTANT
Do not tamper with the PRV as this will affect the performance of your tap.



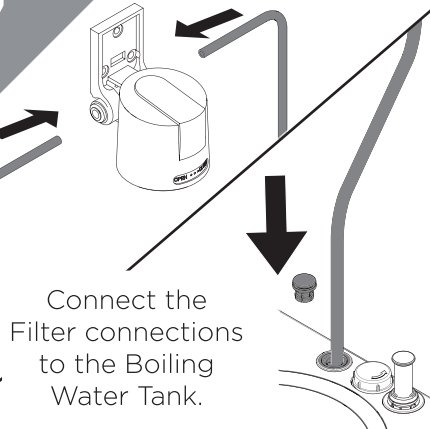
Installation

6

Connect the tap connections to the domestic water supplies.



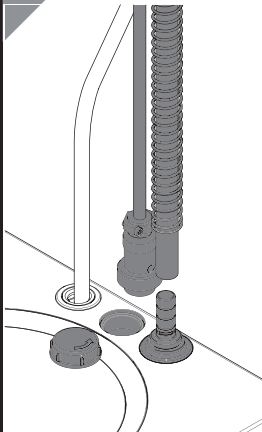
7



Cut the filter pipe tube to size.

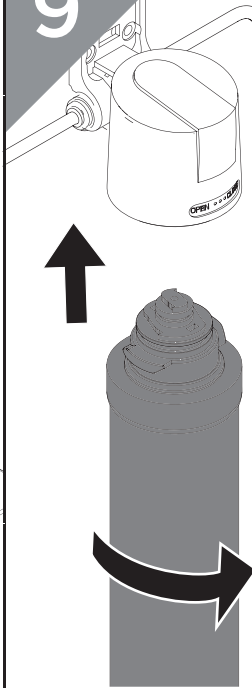
Connect the Filter connections to the Boiling Water Tank.

8



Connect the Electrical cable. Push on the silicon hose, trimming off any excess. Slide down the spring to secure in place.

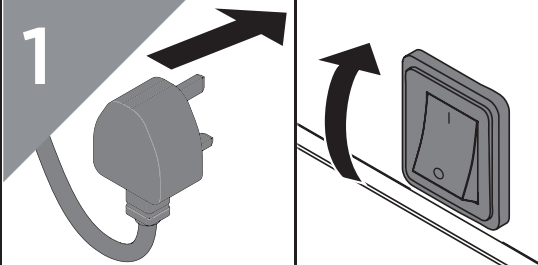
9



Attach the Filter Sump to the Mounting Bracket.

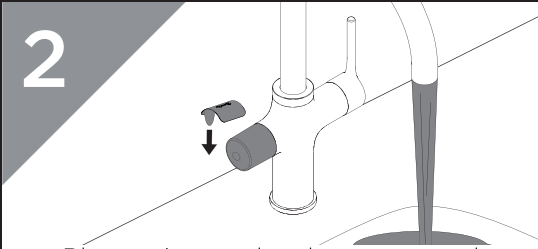
Preparation for Use

1



Switch on the Boiling Water Tank.

2



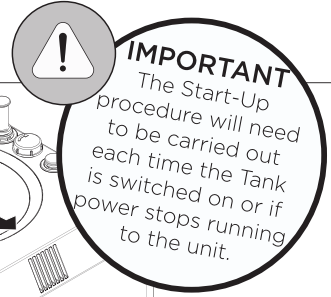
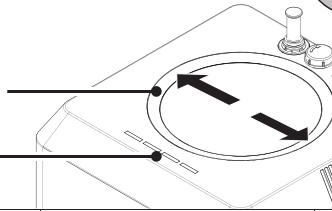
Place a jug under the spout and expel all air from the system. Check connections for any leaks. Run off at least 20 litres of water from the Boiling Water Touch Control handle, resting the system every 30 seconds.

Your Tap is now Ready for Use.

Operation

Touch Sensitive Ring:
Touch and Tap to select through 4 different temperature settings.

Temperature Setting Bars



Lit Bar Sequence

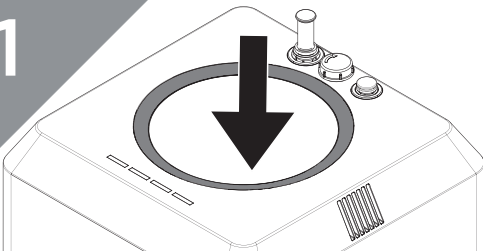
Temperature Range

Nominal Temperature

1st -		75-80°C	80°C
2nd -		81-86°C	86°C
3rd -		87-92°C	92°C
4th -		93-98°C	98°C
All -		Tank Locked/Cold Mode - Water stays unheated.	
None -		Powered Off/Tank Unlocked - enter temp setting.	

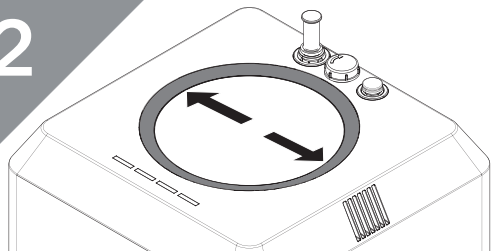
Start-Up/Change Temperature

1



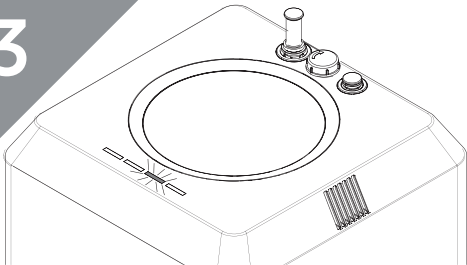
Press and hold the Touch Sensitive Ring for approx. 8 seconds until the display starts flashing. Once unlit, the tank will be unlocked for heating.

2



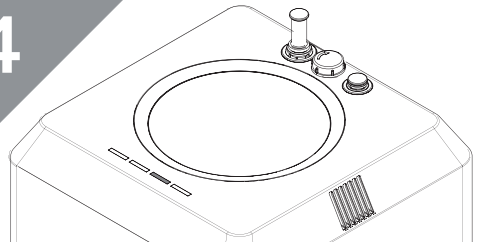
Tap the Touch Sensitive Ring to select your desired Temperature Setting. See the above table for Temperature Settings.

3



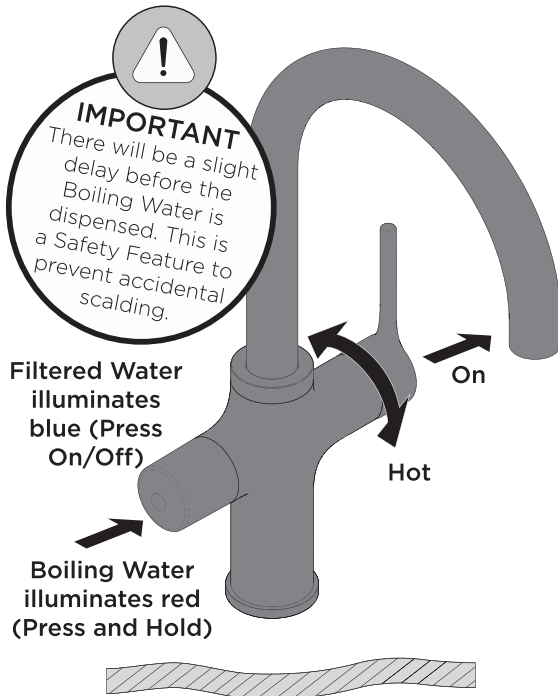
The Temperature Setting Bar will flash whilst the water is heating up.

4



The water will be at the set temperature once the Temperature Setting Bar stays lit.

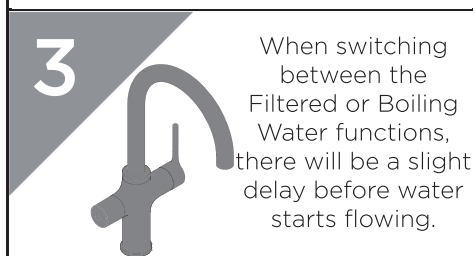
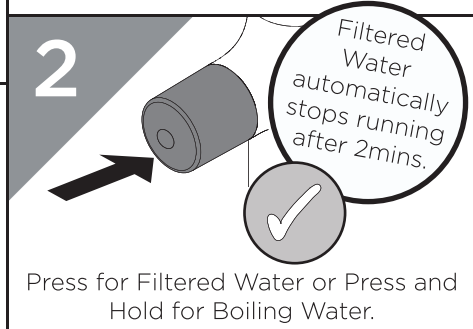
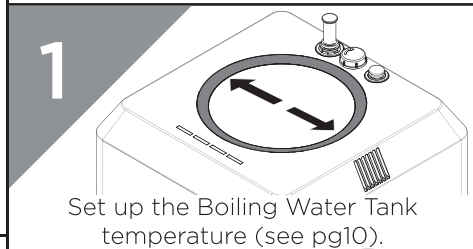
Operation



Optimum Temperatures

Nominal Temperature	Suitable For
80°C	Green Tea
86°C	Instant Coffee, Oolong Tea
92°C	Oolong Tea, Brewing Coffee
98°C	Black Tea, Herbal Tea

For Filtered/Boiling Water



General Cleaning

Your fitting has a high quality finish and should be treated with care to preserve the visible surfaces. All surfaces will wear if not cleaned correctly, the only safe way to clean your product is to wipe with a soft damp cloth. Stains can be removed using washing up liquid.

All bath cleaning powders and liquids will damage the surface of your fitting, even the non-scratch cleaners.

Note: Never use abrasive detergents or disinfectants or those containing alcohol, hydrochloric acid or phosphoric acid.

Maintenance

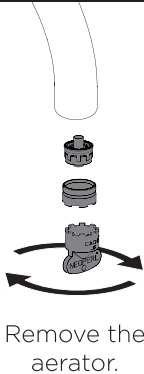
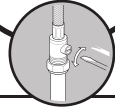
Cleaning Outlet

1



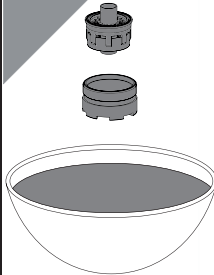
IMPORTANT

Isolate the water supply before starting!



Remove the aerator.

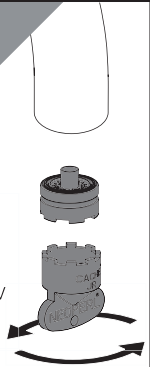
2



Using a suitable solution, scrub and wash the aerator until fully de-scaled. Rinse thoroughly.

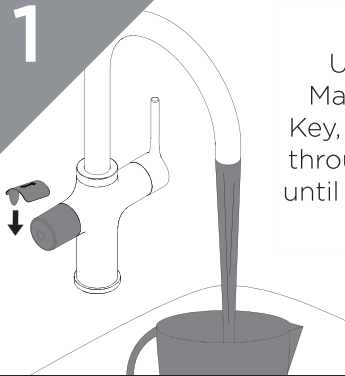
3

Put the aerator together and screw in place.



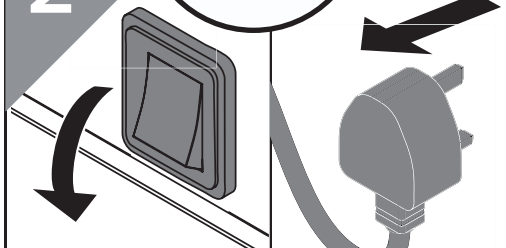
1

Using the Maintenance Key, flush water through the tap until it runs cold.



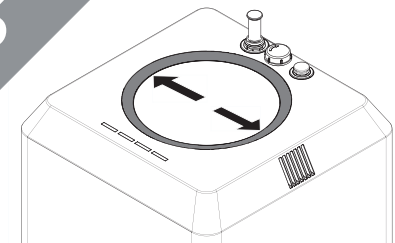
2

Flush the tank if the tap isn't in use for long periods of time.



Switch off the Boiling Water Tank and unplug.

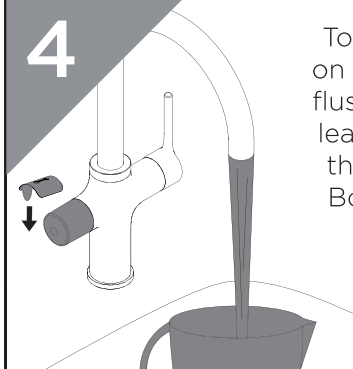
3



Re-connect and set up the Boiling Water Tank on the maximum temperature setting (see pg10).

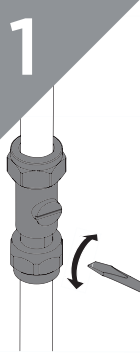
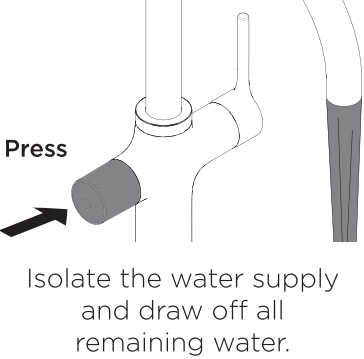
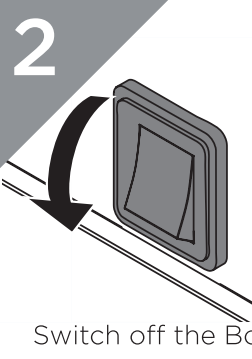
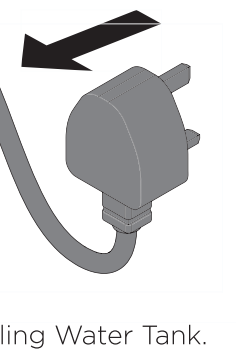
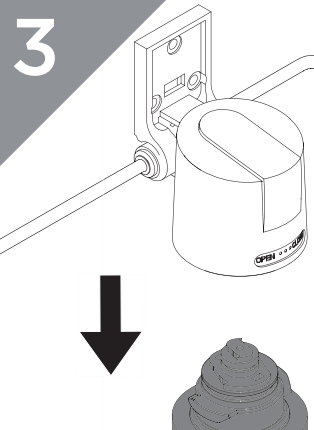
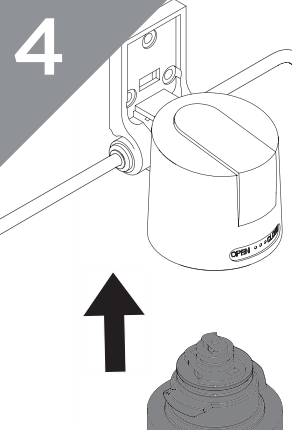
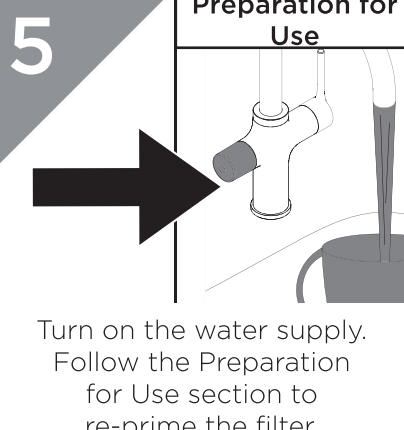
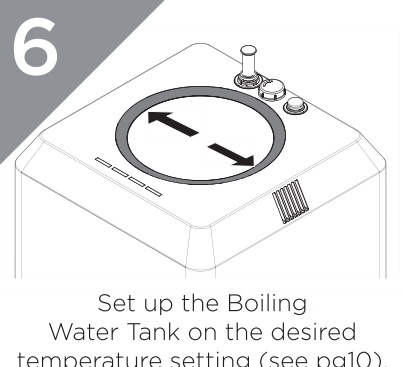
4

To re-use, turn on the Tank and flush through at least 5 litres on the maximum Boiling Water setting to sterilise.



Maintenance

Changing the Filter

<p>1</p> 	<p>Press</p>  <p>Isolate the water supply and draw off all remaining water.</p>	<p>2</p>  <p>Switch off the Boiling Water Tank.</p>	
<p>3</p>  <p>Place a small bowl underneath the filter sump and remove it.</p>	<p>4</p>  <p>Dispose of the old filter and replace with the new filter.</p>	<p>5</p> <p>Preparation for Use</p>  <p>Turn on the water supply. Follow the Preparation for Use section to re-prime the filter.</p>	
		<p>6</p>  <p>Set up the Boiling Water Tank on the desired temperature setting (see pg10).</p>	

Maintenance Schedule

We have included this maintenance schedule in order to help keep track of when to replace your filter; which can be ordered using **RAP FILT** on the Bristan website. Please ensure your plumber fills in the date of installation.

Date Installed/Replaced	Date Due for Replacement
___/___/_____	

Notes

Troubleshooting

Symptom	Cause	Remedy
No flow from the Boiling Water Function	Boiling Water Tank is empty at first switch-on.	Follow the Preparation for Use section.
	Boiling Water Tank isn't holding water.	Check connections for any leaks. Contact Customer Services.
Boiling Water Touch Control flashing red.	Boiling Water has been running for a long period	This is a safety feature to prevent the tank from over-heating. Power off and rest for 2 minutes before switching back on. If the problem persists, please contact Customer Services.
	Frequent switching between cold and boiling water over an extended period	
Water/Steam is spitting from the spout.	Unit is boiling.	Press the Boiling Water Touch Control handle and release the water.
		Adjust the water temperature to a lower setting - See Operation.
		Check the aerator isn't blocked.
		Follow the Preparation for Use section to remove any airlocks.
Water is not hot.	The Boiling Water Tank is unplugged.	Make sure the appliance is plugged in and the display is lit.
	The Boiling Water Tank is not switched on.	Make sure the circuit breaker and fuse are working correctly.
	Water hasn't finished heating up.	
	No heating option has been selected/Boiling Water Tank is locked.	Ensure the Boiling Water Tank is plugged in and that the Start-Up steps (pg10) have been followed. Wait until the Temperature Setting Bar stays lit before use.
Water is too hot.	The water temperature is set too high.	Ensure that all four lights are not lit on the Boiling Water Tank. If they are, following the Start-Up steps to unlock the tank.
		Set the water temperature to a lower setting - See Operation.
Water is dripping from the spout.	The Expansion Chamber isn't draining correctly.	Draw off 500ml of water to clear and prime the system. Avoid drawing off less than 150ml per use.
	Blocked spout.	See Maintenance Section to Clean Aerator.
Slow flow from the spout.	Water Filter needs changing.	Refer to the Maintenance Steps to change the water filter. This must be changed every 6 months or it will invalidate the guarantee.
Water doesn't flow straight away.	As a safety feature, water is drawn into the tank after each use to prevent accidental scalding. There will be a slight delay until the instant hot water appears.	After a large volume of water has been drawn off, there may be a slightly longer delay in water appearing from the Instant Hot Water spout.
No water flowing.	Closed/Partially closed isolation valves.	Make sure isolation valves are fully open.
	Flexible tails kinked/blocked.	Ensure pipes are not twisted or kinked to restrict flow.
	Boiling Water Tank may be blocked.	Contact Customer Services.

Need help? Give us a call on **0330 026 6273** and speak to one of our trained advisors. **15**

Issue: D4

Part Number: FI GLL RAPSNK4 C

BRISTAN

TAPS & SHOWERS

Bristan Group Ltd.

Birch Coppice Business Park
Dordon
Tamworth
Staffordshire
B78 1SG

Web: www.bristan.com

Email: enquire@bristan.com

A Masco Company

At Bristan, we want to make things as easy as possible for our customers. That's why we offer solid guarantees on all our products, effective from the date of purchase, to give you peace of mind. To start your free guarantee simply scan the QR code and register your product. Alternatively visit www.bristan.com/register.

For any other queries, please call our Customer Service on 0330 026 6273 where our expert team of advisors will be able to offer you any help and advice. For full guarantee terms and conditions visit www.bristan.com/guarantees.



We Know & We Care