

BRISTAN

Installation Instructions & User Guide

Please leave these instructions
with the end user

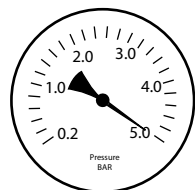
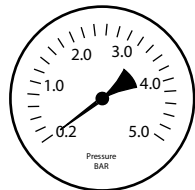
Product Code: TY2 3HBF C (D2)

Specifications

Dynamic Water Pressure

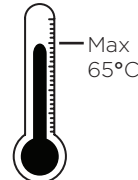
Min: 0.2 bar

Max: 5.0 bar



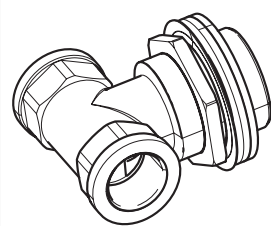
Maximum Static Pressure: 10.0 bar

Inlet Water Temperature

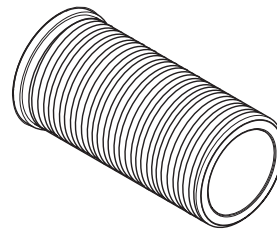


65°C
Maximum

Inlet Connections



Side Bodies -
1/2" BSP Female



Spout - 1/2" BSP

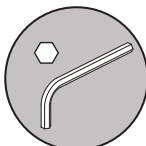
Tools You'll Need



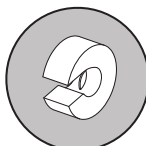
Crosshead
Screwdriver



Adjustable
Spanner



Hexagonal Keys



Pipe Cutter



Drill



Pencil



Safety
Goggles

Prior to Installation

All products manufactured and supplied by Bristan are safe to use provided that they are installed, operated and receive regular maintenance in accordance with these instructions.

This product needs to be installed in accordance with, and meet the requirements of the Water Supply (Water Fittings) Regulations 1999 and current by-laws. For full Installation Requirements & Notes (IRN) please visit wras.co.uk/directory.

Isolation valves must be fitted to the inlet water supplies to ensure ease of future maintenance.

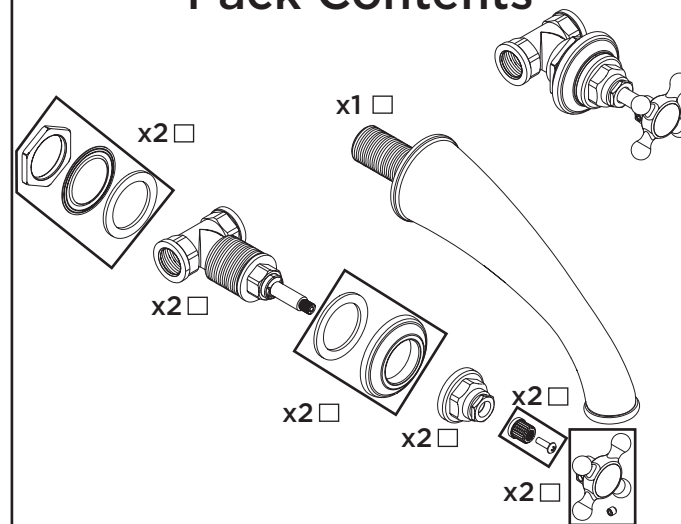
Before installing this product the water supply must be thoroughly flushed in order to remove any swarf, solder etc. Full access must be made available for future maintenance/servicing purposes.

This product must not be modified in any way as this will invalidate the guarantee.

If in doubt, contact a registered plumber, your Local Water Authority or the Secretary of the Institute of Plumbing, address as follows:-

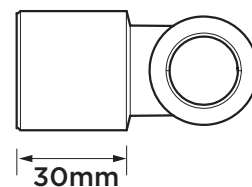
The Institute of Plumbing,
64 Station Lane,
Hornchurch,
Essex,
RM12 6NB, Tel: 01708 472791

Pack Contents

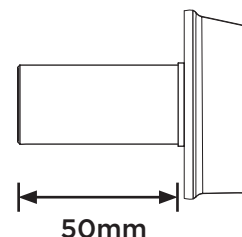


Thread Lengths

Side Bodies



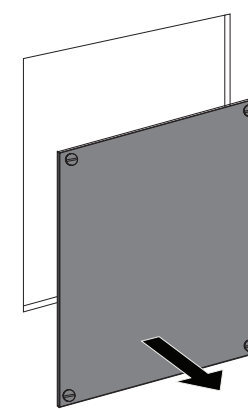
Spout



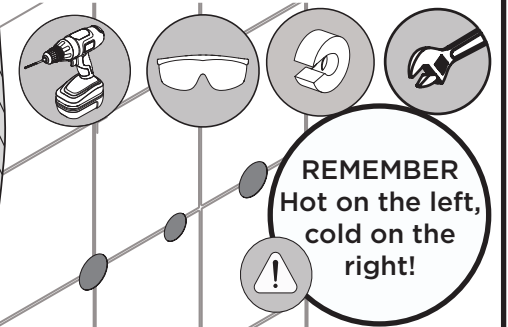
Installation

1

Create the rear
access point
in the back of the
wall cavity.



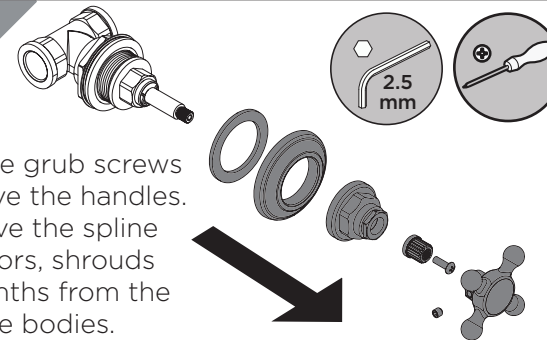
2



Identify the required position of the spout and side bodies. Mark and drill holes. Prepare the water supply pipes to the location. Install suitable batons into the wall cavity if required. Secure pipes to the wall. Finish the wall surface. (The use of a false wall is advised).

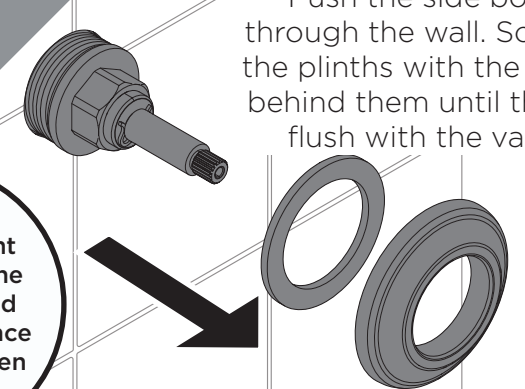
3

Undo the grub screws to remove the handles. Remove the spline adaptors, shrouds and plinths from the side bodies.



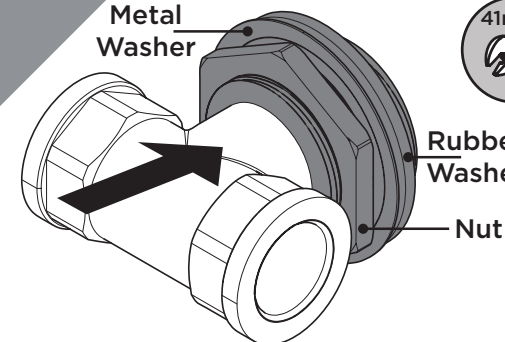
4

Push the side bodies through the wall. Screw on the plinths with the washer behind them until they are flush with the valves.



5

Metal
Washer

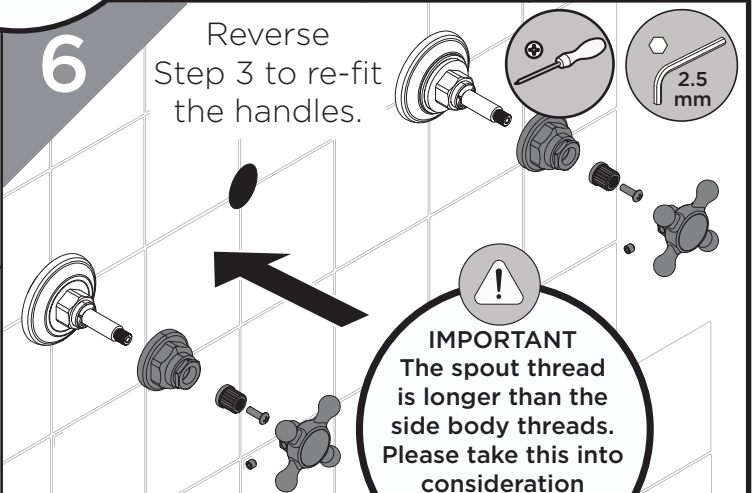


Rubber
Washer
Nut

IMPORTANT
Leave sufficient
clearance for the
side bodies and
spout thread once
the wall has been
completed.

6

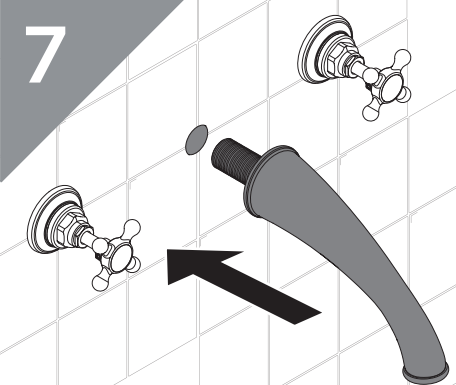
Reverse
Step 3 to re-fit
the handles.



IMPORTANT
The spout thread
is longer than the
side body threads.
Please take this into
consideration
when plumbing
the fittings.

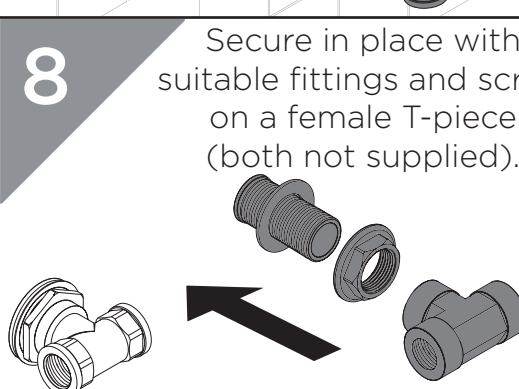
7

Push the
spout through
the wall.



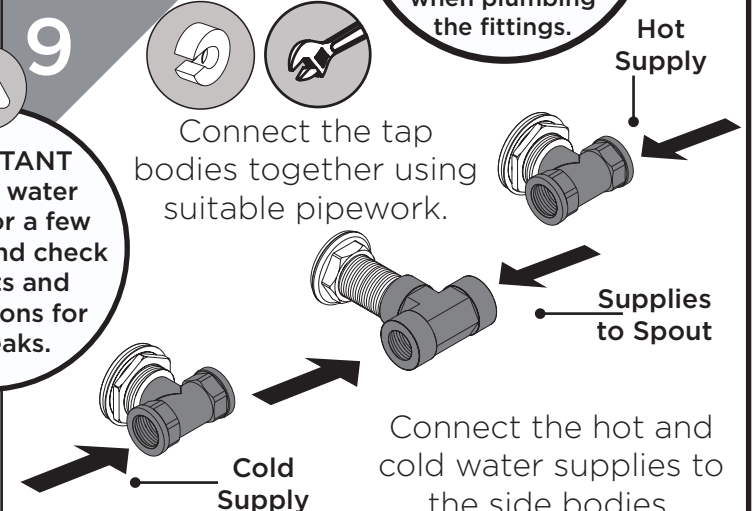
8

Secure in place with
suitable fittings and screw
on a female T-piece
(both not supplied).



9

Connect the tap
bodies together using
suitable pipework.



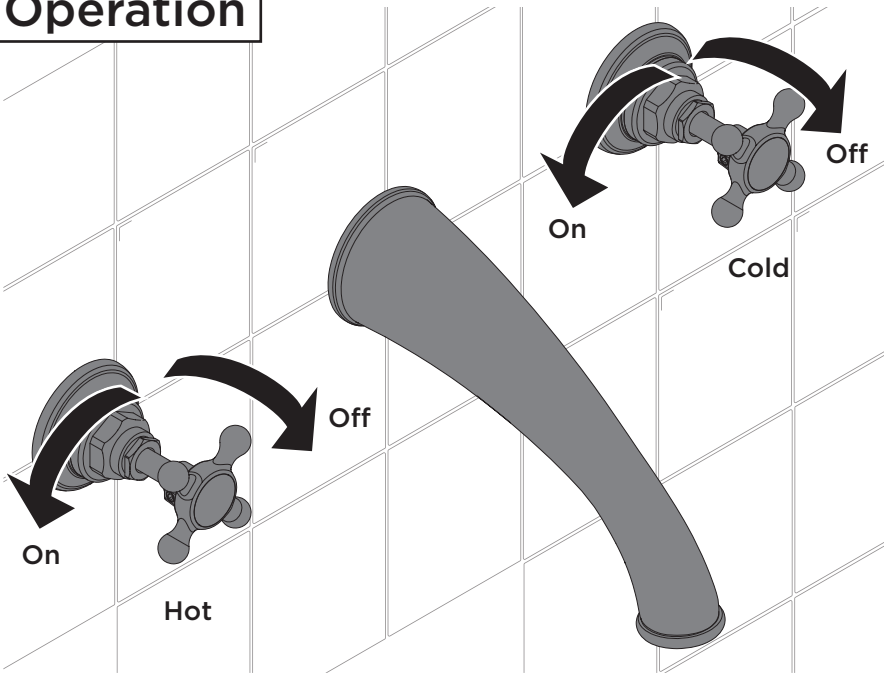
Hot
Supply

Supplies
to Spout

Cold
Supply

Connect the hot and cold water supplies to the side bodies.

Operation



General Cleaning

Bristan products are made from premium materials, with hand polished, PVD, EPD or electroplated finishes.

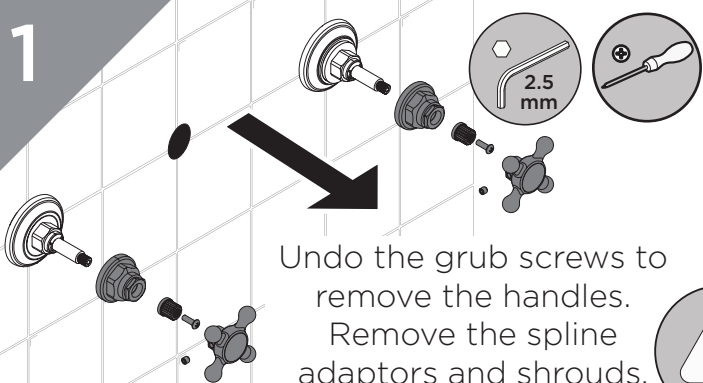
Your taps or shower should be regularly cleaned with warm water, a mild pH-neutral liquid soap, and polished with a soft cloth. Any residues from soap, toothpaste, shampoos and shower gels can cause blemishes if not rinsed off straight after use.

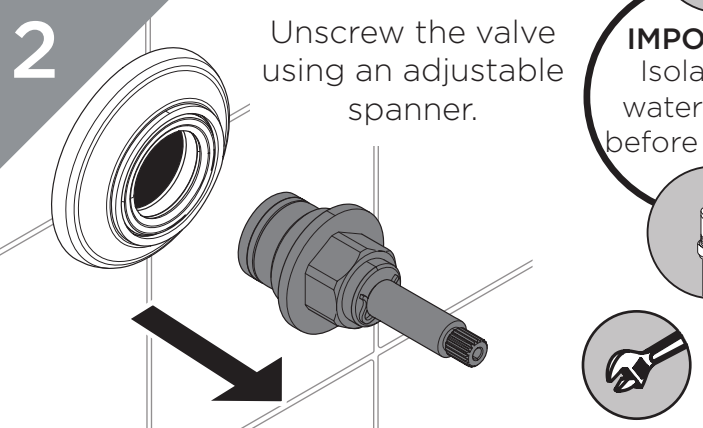
Household bleaches and cleaners contain harsh chemicals and may damage the surface finish. Avoid using abrasive cloths, scouring pads, scrub sponges, steel wool or anything similar.


Some surfaces such as nickel and pewter may be affected by the dye found in some cloths, so it is also important to avoid hanging cloths on spouts.

Troubleshooting		
Symptom	Cause	Remedy
No flow or low flow rate	Partially closed isolation valve.	Open isolation valve.
	Instantaneous water heater cycles on and off as flow rate or pressure is too low.	Increase water flow rate or pressure through system.
	Head of water is below the minimum distance required.	Refer to specification for minimum distance required.
	Hot or cold water being drawn off elsewhere causing pressure changes or instantaneous boiler temperature changes.	Do not use other water outlets when using the taps.
	Airlock or partial blockage in the supply pipework.	Flush through pipework to ensure removal of debris and any airlocks.
Water dripping from taps	This is normal for a short time after using the taps.	This is caused by residual water tension, the build up of water in the tap body.
	If water continues to drip, possibly due to the ceramic disc valves	Remove valves and clean, refer to 'Maintenance' section before starting any maintenance.
Taps do not turn on	Closed isolation valve.	Open isolation valve.
	Mains water supply turned off.	Turn on mains water supply.

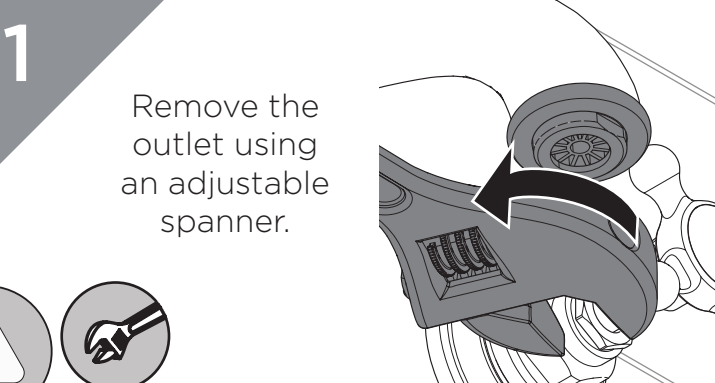
Maintenance - Replacing Valves

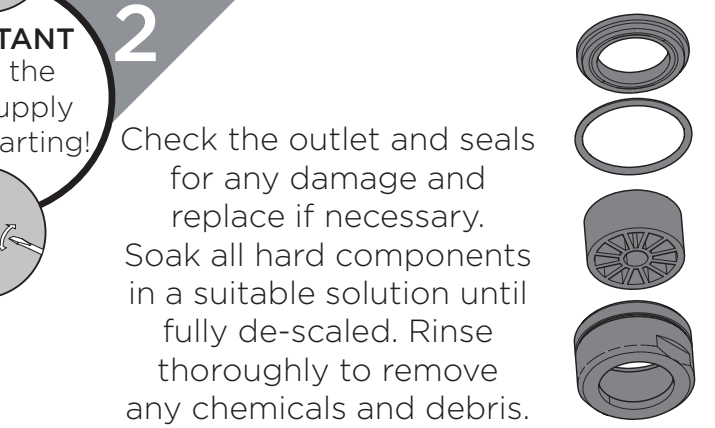
1

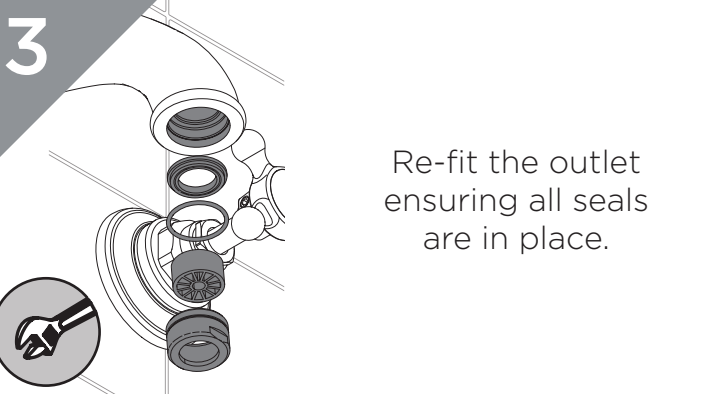
2

3

Maintenance - Replacing Outlet

1

2

3

Notes

Please use this space for any notes you or your installer may have regarding the installation/plumbing of this product.

Contact Us

Bristan

Bristan Group Ltd.

UK: Bristan Group, B78 1SG.
EU: Masco Europe S.à.r.l.
14 Rue Strachen
6933 Mensdorf
Luxembourg

Customer Service: +44330 026 6273
Web: www.bristan.com
Email: enquire@bristan.com

A Masco Company

Our Guarantee

At Bristan, we want to make things as easy as possible for our customers. That's why we offer solid guarantees on all our products, effective from the date of purchase, to give you peace of mind.

To start your free guarantee simply scan the QR code and register your product. Alternatively visit www.bristan.com/register.

For any other queries, please call our Customer Service on 0330 026 6273 where our expert team of advisors will be able to offer you any help and advice.

For full guarantee terms and conditions visit www.bristan.com/service-centre/guarantees.

