

# BRISTAN

TAPS & SHOWERS

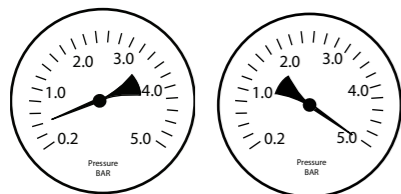
## Installation Instructions & User Guide

Product code: TFP3005IR

### Specifications

#### Operating Water Pressure

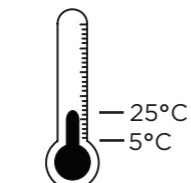
Min: 0.5 bar Max: 5.0 bar



Maximum Static Pressure: 10.0bar

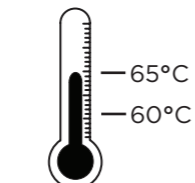
#### Inlet water temperature

Cold Water Supply



Min: 5°C Max: 25°C

Hot Water Supply



Min: 60°C Max: 65°C

#### Designation

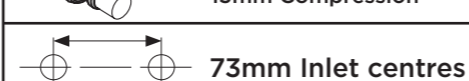
HP-SE High Pressure Shower  
LP-SE Low Pressure Shower

Factory pre-set 41°C



**IMPORTANT**  
The inlet hot water must be at least 10°C above the required blend temperature.

Inlet Connections  
15mm Compression

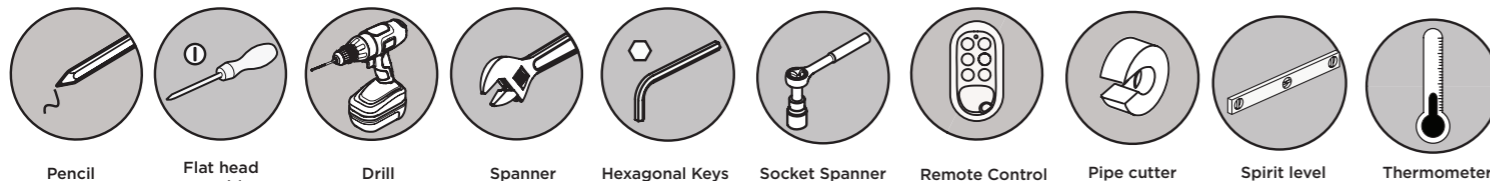


Power Supply: DC- 6V (4 x Alkaline LR6 1.5 V AA, preferably 2000mAh, not supplied)

Power Consumption:  
Static- <0.3MW  
Active- <3W

Sensing Range: 50mm to 160mm (+/- 10%)

### Tools You'll need



### Prior to Installation

All products manufactured and supplied by Bristan are safe provided they are installed, used correctly and receive regular maintenance in accordance with these instructions

This product needs to be installed in accordance with, and meet the requirements of the Water Supply (Water Fittings) Regulations 1999 and Scottish Bye-laws 2004.

For product specific installation requirements, please visit [www.wras.co.uk](http://www.wras.co.uk)

Isolation valves **must** be fitted to the inlet water supplies to ensure ease of future maintenance.

Before installing this product the water supply **must** be thoroughly flushed in order to remove any swarf, solder etc.

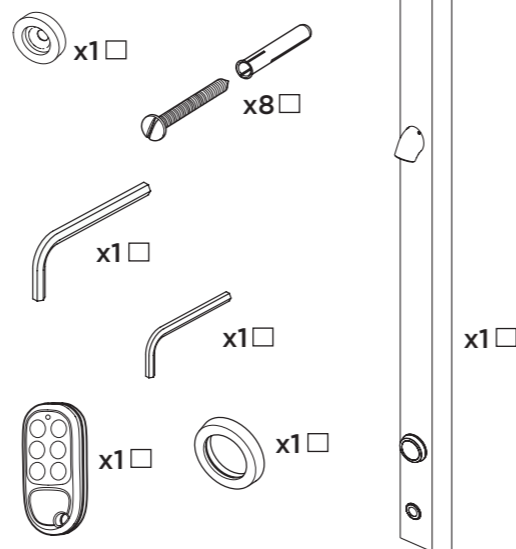
This product **must** not be modified in any way as this will invalidate the guarantee.

Full access must be made available for future maintenance / servicing purposes.

If in doubt, contact a registered plumber or your Local Water Authority or the Secretary of the Institute of Plumbing, address as follows:-

The Institute of Plumbing,  
64 Station Lane,  
Hornchurch,  
Essex,  
RM12 6NB, Tel: 01708 472791

### Pack Contents



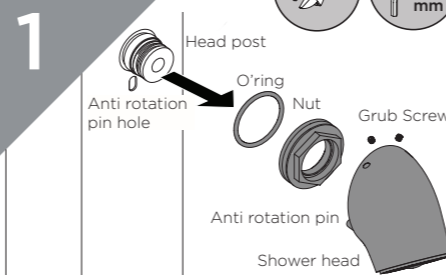
### Why not visit our Youtube channel

To see our latest how-to videos, simply scan the QR code with your smart phone or tablet.

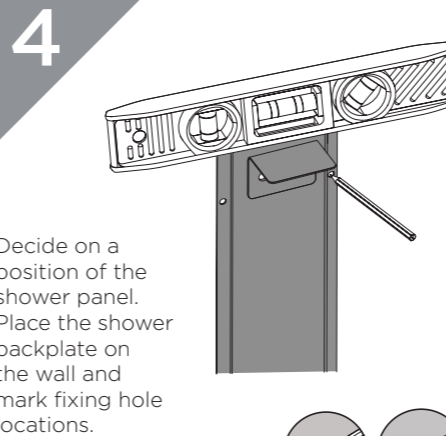


Alternatively visit [www.youtube.com/bristantv](http://www.youtube.com/bristantv)

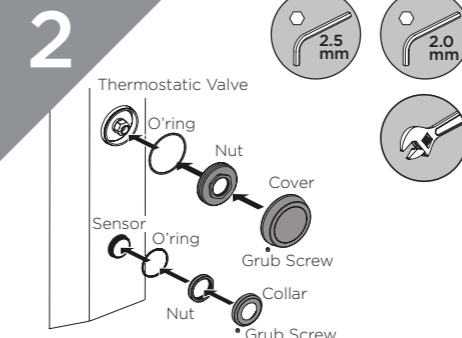
### Installation



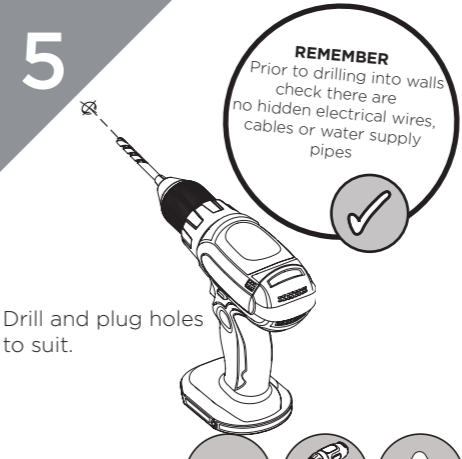
Loosen shower head grub screws, remove the shower head, unscrew the nut and remove the O-ring and anti rotation pin from the panel.



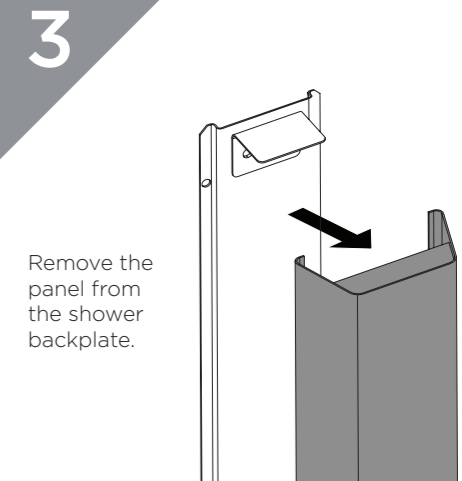
Decide on a position of the shower panel. Place the shower backplate on the wall and mark fixing hole locations.



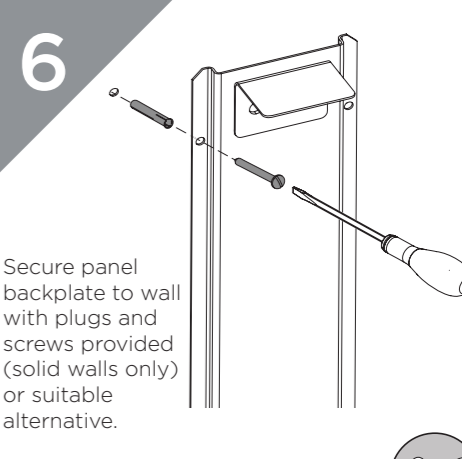
Loosen the sensor/valve grub screws, remove the collar/ cover, remove the nuts and the O-rings from the shower panel.



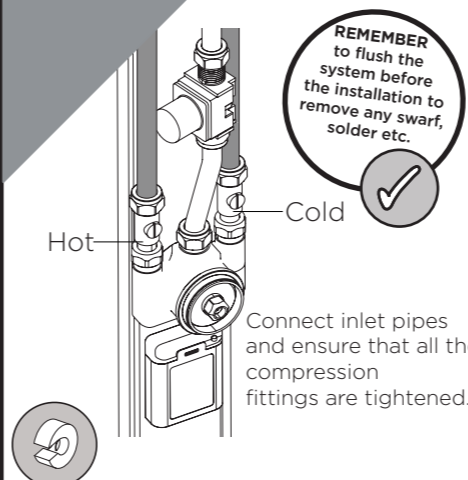
Drill and plug holes to suit.



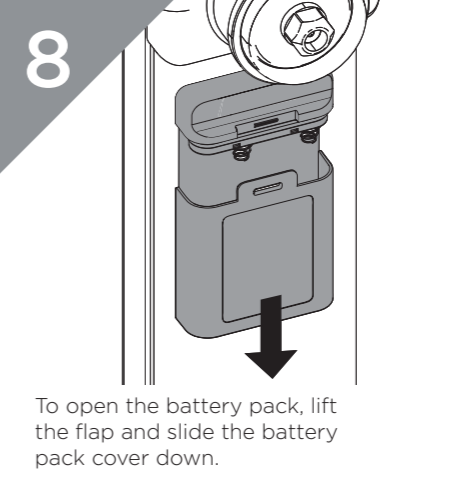
Remove the panel from the shower backplate.



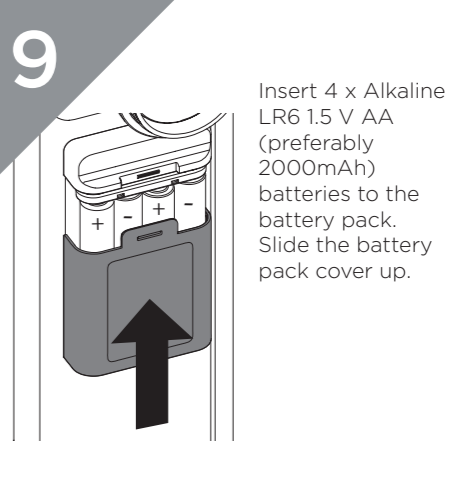
Secure panel backplate to wall with plugs and screws provided (solid walls only) or suitable alternative.



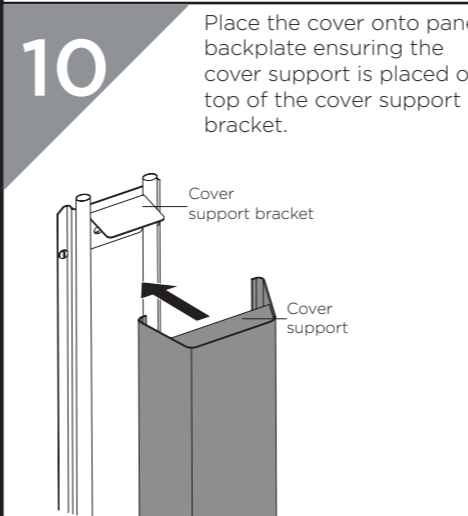
Connect inlet pipes and ensure that all the compression fittings are tightened.



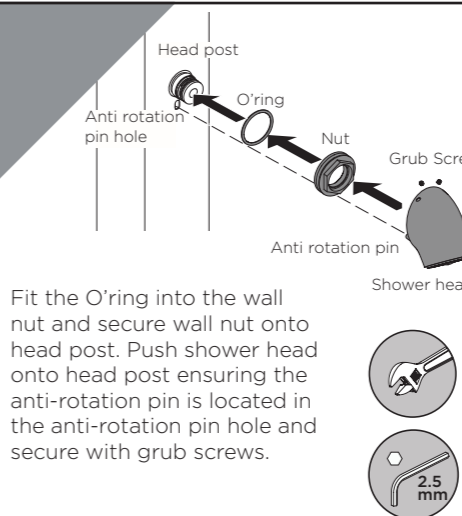
To open the battery pack, lift the flap and slide the battery pack cover down.



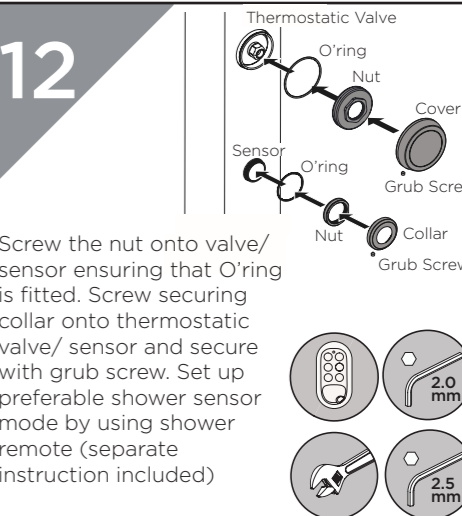
Insert 4 x Alkaline LR6 1.5 V AA (preferably 2000mAh) batteries to the battery pack. Slide the battery pack cover up.



Place the cover onto panel backplate ensuring the cover support is placed on top of the cover support bracket.



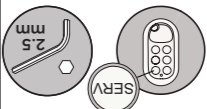
Fit the O-ring into the wall nut and secure wall nut onto head post. Push shower head onto head post ensuring the anti-rotation pin is located in the anti-rotation pin hole and secure with grub screws.



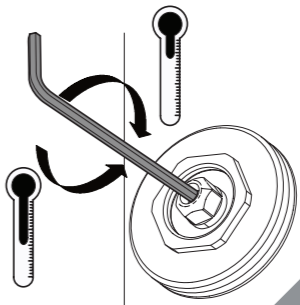
Screw the nut onto valve/sensor ensuring that O-ring is fitted. Screw securing collar onto thermostatic valve/ sensor and secure with grub screw. Set up preferable shower sensor mode by using shower remote (separate instruction included)

## Commissioning

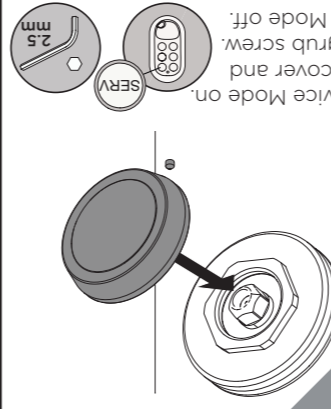
1 Turn Service Mode on and remove the cover, turn the water on, letting it flow to stabilise the temperature. Turn Service Mode off.



2 Insert the hexagonal key in the front of the valve head, turn clockwise to decrease temperature and anti-clockwise to increase it.

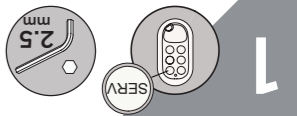


3 Turn the Service Mode on. Replace the cover and tighten the grub screw. Turn Service Mode off.



## Spray Pattern Adjusting

1 Turn Service Mode on, remove the shower head.



2 Remove the middle and inner spray ring from the shower head.



3 Spray pattern can be changed by swapping middle and/or inner spray rings with the blanking rings.



4 Replace inner, middle spray rings and the screw into the shower head.



5 Tighten the screw and turn Service mode off.



## Spray Pattern Angle

1 Turn Service Mode on then loosen the screw in the shower head.



2 Adjust the angle of the spray rings, the angle can be adjusted +/- 15 degrees.



3 Tighten the screw and turn Service Mode off.



## Servicing Intervals

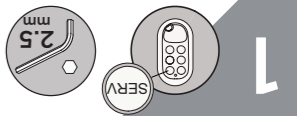
REMEMBER To service your product, limescale and to ensure this shower works to its maximum performance we recommend this shower is serviced every 6-12 months depending on the hardness of your water.



Spare Parts To replace any spare parts for your shower why not scan the QR Code and search for your product.

## Spray Pattern Adjusting

1 Turn Service Mode on, remove the shower head.



2 Remove the middle and inner spray ring from the shower head.



3 Spray pattern can be changed by swapping middle and/or inner spray rings with the blanking rings.



4 Replace inner, middle spray rings and the screw into the shower head.

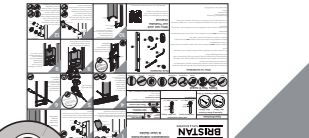


5 Tighten the screw and turn Service mode off.

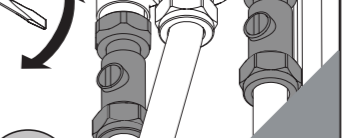


## Maintenance - Cartridge Cleaning

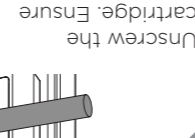
1 Turn the Service Mode on and follow the installation steps from 1 to 3.



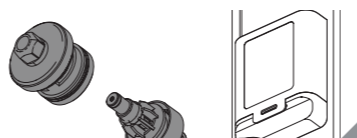
2 Turn the Service Mode off.



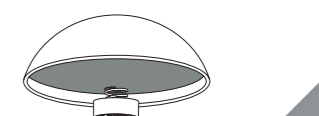
3 UnscREW the cartridge. Ensure you DO NOT damage the valve, pipe work or backplate.



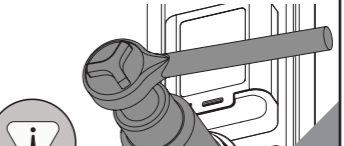
4 Remove the cartridge and the piston.



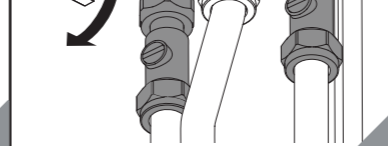
5 Remove any O-rings, soak all components in descaler and wash off in clean water. Examine all seals and replace if needed. Use WRAS approved silicon based grease on all seals.



6 Replace the piston assembly and the cartridge into the body. Secure in place by tightening the cartridge nut.



7 Turn Isolation Valves on.



8 Follow installation steps from 10 to 12. Turn the Service Mode on. Turn water supply on.

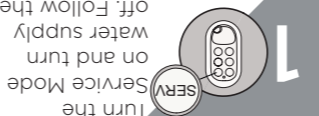


## Troubleshooting

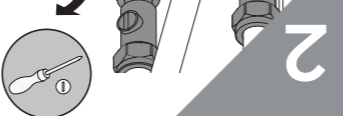
Symptom	Cause	Remedy
No flow or low flow rate	partially closed isolation valve.	Open isolation valve.
Instantaneous water heater cycles on and off as flow rate or pressure is too low.	Head of water is below the minimum distance required.	Increase water flow rate or pressure through system.
Airlock or partial blockage in the supply pipework.	Flush through pipework to ensure removal of debris and any airlocks.	
Reduced or irregular spray pattern	Build up of debris in the shower head. Refer to the 'Spray pattern' section. Clean the shower head inserts in the descaler.	
Water dripping from shower	This is normal for a short time after using the shower.	
Shower does not turn on	Shower closed isolation valve. If water continues to drip shower.	Please contact Customer Service at Bristan.
	Mains water supply turned off.	Turn on mains water supply.
	Battery failure (sensor will flash 8 times)	Refer to the 'Battery replacement' section

## Servicing - flow limiters and filters

1 Turn the Service Mode on and turn water supply off. Follow the installation steps from 1 to 3.



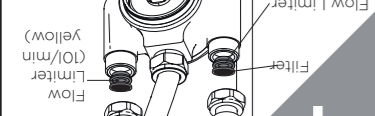
2 Turn Isolation Valves off.



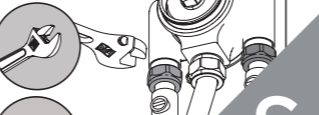
3 Unscrew the nut from the body. Ensure you DO NOT damage the valve, pipe work or backplate.



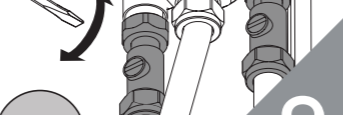
4 Examine the filters and the flow limiters, clean or replace if necessary.



5 Screw the isolation valves back onto the shower body by tightening the nut.



6 Turn Isolation Valves on.



7 Follow installation steps from 10 to 12. Turn the Service Mode off. Turn water supply on.



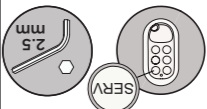
We recommend to clean the panel with damp cloth and mild soap.

REMEMBER Never use abrasive detergents

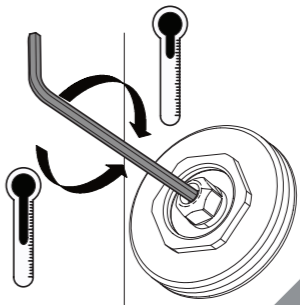
## Cleaning

## Commissioning

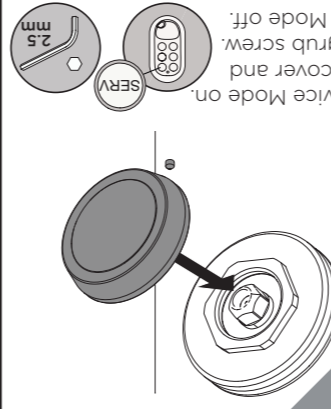
1 Turn Service Mode on and remove the cover, turn the water on, letting it flow to stabilise the temperature. Turn Service Mode off.



2 Insert the hexagonal key in the front of the valve head, turn clockwise to decrease temperature and anti-clockwise to increase it.



3 Turn the Service Mode on. Replace the cover and tighten the grub screw. Turn Service Mode off.

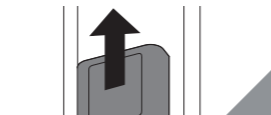


## Battery Replacement

1 Turn the Service Mode on. Follow the installation steps from 1 to 3.



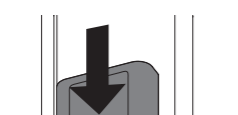
2 To open the battery pack, lift the flap and slide the battery pack cover down.



3 Replace batteries (4 x Alkaline LR6 1.5 V AA, preferably 2000mAh)



4 Slide the battery pack cover up.



5 Follow the installation steps from 10 to 12. Turn the Service Mode off.



At Bristan, we want to make things as easy as possible for our customers. That's why we offer solid guarantees on all our products, effective from the date of purchase, to give you peace of mind.

To start your free guarantee simply scan the QR code and register your product, alternatively visit [www.bristan.com/register](http://www.bristan.com/register).

For any other queries, please call our Customer Service on 03300266273 where our expert team of advisors will be able to offer you any help and advice.

For full guarantee terms and conditions visit [www.bristan.com/guarantees](http://www.bristan.com/guarantees).



We Know & We Care