

# BRISTAN

TAPS & SHOWERS

## Installation Instructions & User Guide

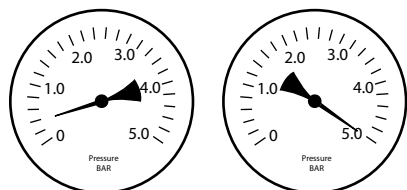
Please leave these instructions  
with the end user

Product Code: AMR EFSNK C (D2)

### Specifications

#### Dynamic Water Pressure

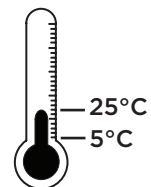
Min: 0.4 bar Max: 5.0 bar



Maximum Static Pressure: 10.0 bar

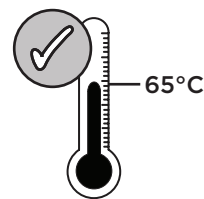
#### Inlet Water Temperature

##### Cold Water Supply



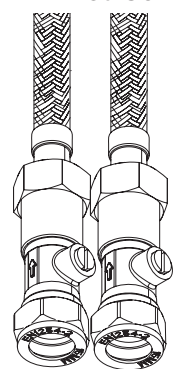
Min: 5°C Max: 25°C

##### Hot Water Supply



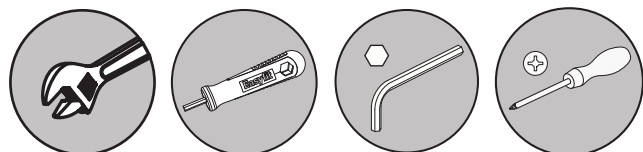
65°C  
Recommended

#### Inlet Connections



1/2" BSP  
Flexible Tails  
with Isolation  
Valves

### Tools You'll Need



Adjustable Spanner EasyFit Tool Hexagonal Key Crosshead Screwdriver

### Servicing Your Tap

We recommend servicing your tap at  
least once every year to prolong its life.  
To see a video showing how to remove  
the cartridge for servicing, scan the QR  
code with your smart phone or tablet.



Alternatively visit [www.youtube.com/BristanTV](http://www.youtube.com/BristanTV)

### Prior to Installation

All products manufactured and supplied by Bristan are safe provided  
they are installed, used correctly and receive regular maintenance in  
accordance with these instructions.

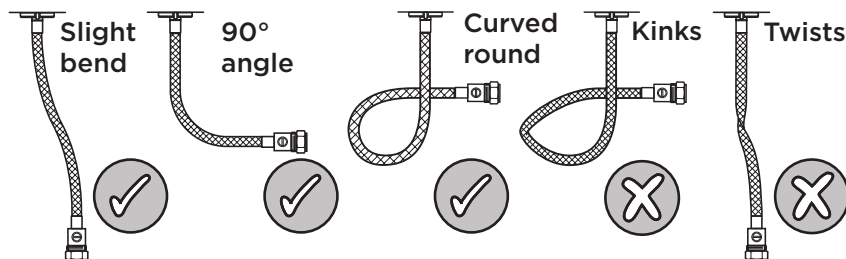
This product has been tested to the Water Regulations Advisory  
Scheme (WRAS) and satisfies the requirements of the Water Supply  
(Water Fittings) Regulations 1999 and current bylaws.  
For full Installation Requirements & Notes (IRN) please visit  
[wras.co.uk/directory](http://wras.co.uk/directory).

Isolation valves must be fitted to the inlet water supplies to ensure ease  
of future maintenance.

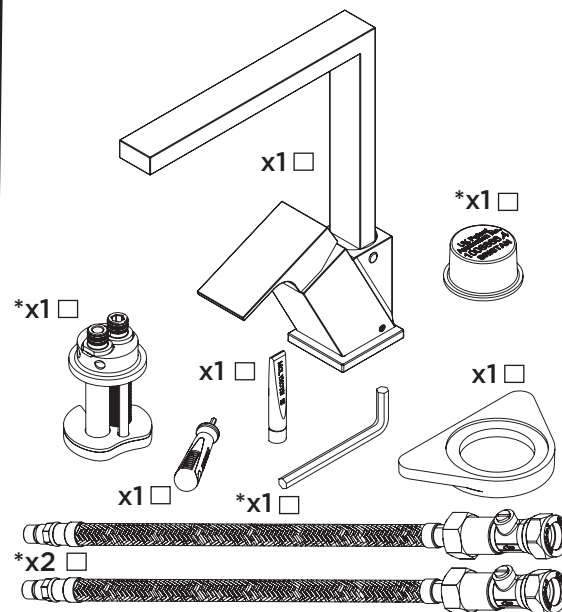
Before installing these taps the water supply must be thoroughly  
flushed in order to remove any swarf, solder etc.

This product must not be modified in any way as this will invalidate the  
guarantee.

### Flexible Connecting Pipes



### Pack Contents



\*If you have purchased AMR EFSNK C TO,  
the EasyFit Base (EF KIT PK) will not be included.

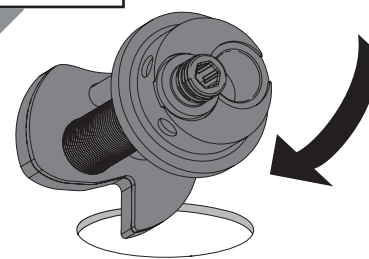
### Spare Parts

To replace any spare parts  
for your tap, why not  
scan the QR Code or  
visit [www.bristan.com](http://www.bristan.com)  
and search for your product.



### Installation

1

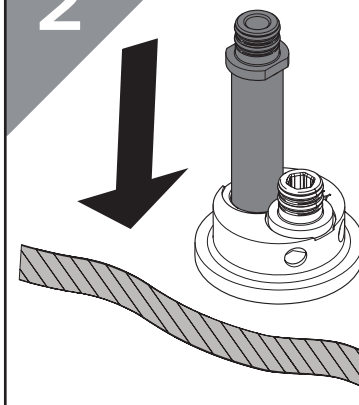


Feed the base  
through the  
sink hole from  
the top.



If the surface the tap is being fitted to is over 8mm;  
or you feel the tap needs extra stability, follow  
the **alternative installation steps** overleaf.

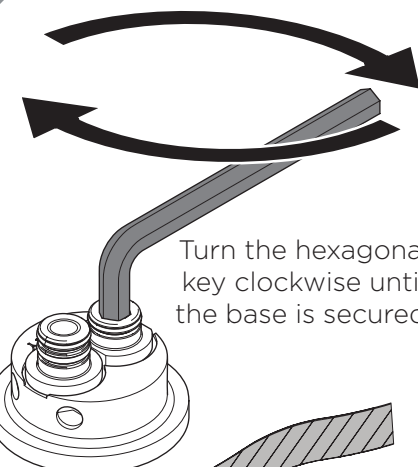
2



**REMEMBER**  
Make sure the  
base is centralised  
when viewed from  
the front of  
the tap

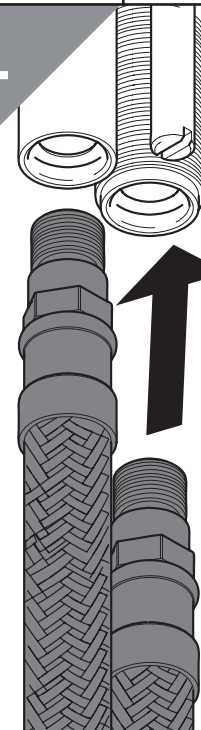
Drop the Plain Inlet  
Connector into  
the base.

3



Turn the hexagonal  
key clockwise until  
the base is secured.

4

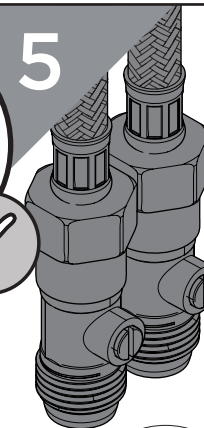


**REMEMBER**  
hot on the  
left, cold on  
the right

Screw the  
flexible tails  
into the base.

**DO NOT  
OVER-TIGHTEN**

5



Connect the hot and  
cold water  
connections.

Olive

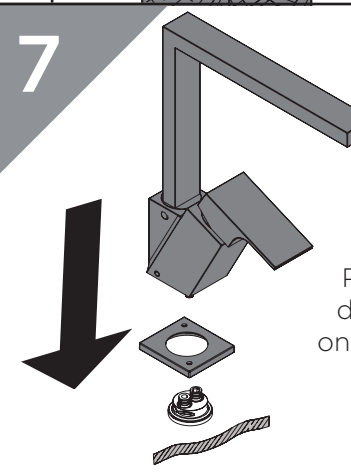
Compression  
Nut

6



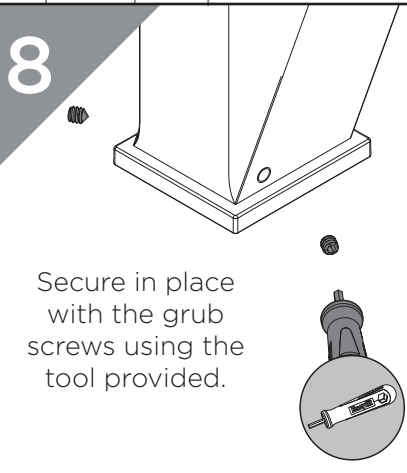
Grease the  
O-Rings using the  
Molykote Grease  
provided.

7



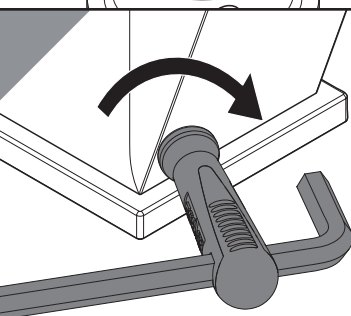
Place your  
desired tap  
onto the base.

8



Secure in place  
with the grub  
screws using the  
tool provided.

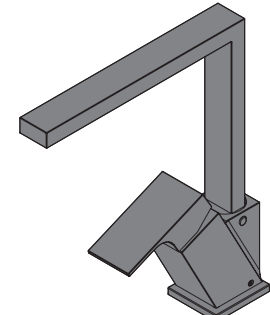
9



Thread the  
hexagonal key  
through the  
EasyFit tool and  
tighten the grub  
screws with an  
extra 1/2 turn.



Your tap is now  
ready to use.



General Cleaning

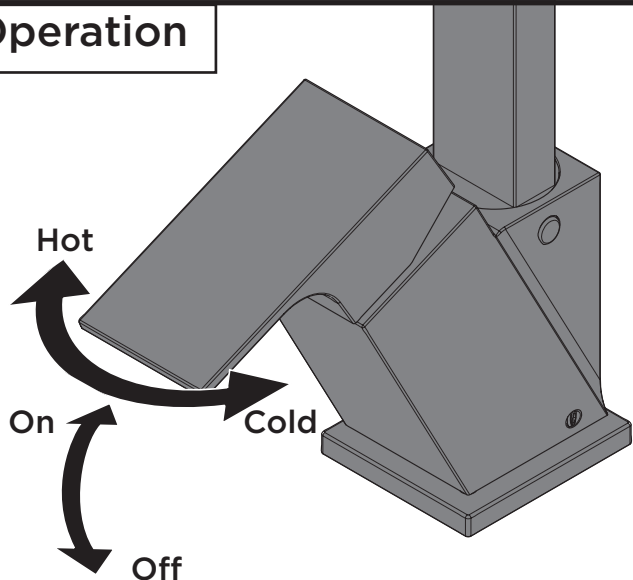
Bristan products are made from premium materials, with hand polishing and electroplated finishes.

Your taps or shower should be regularly cleaned with warm water, a mild pH-neutral liquid soap, and polished with a soft cloth. Any residues from soap, toiletries etc. should be rinsed off straight after use.

Household bleaches and cleaners contain harsh chemicals and may damage the surface finish. Avoid using abrasive cloths, scouring pads, scrub sponges, steel wool or anything similar.

Some surfaces such as nickel and pewter may be affected by the dye found in some cloths, so it is also important to avoid hanging cloths on spouts.

Operation



Maintenance - Cleaning/Replacing Cartridge

**1**

**IMPORTANT**  
Isolate the water supply before starting!

Remove cap and grub screw.  
Remove handle.

2.5 mm

**2**

Remove shroud and retaining nut.  
Remove cartridge.

**3**

Place valves in a suitable solution and soak until fully de-scaled.

**4**

Replace cartridge, nut and shroud.

**5**

Replace the handle.

2.5 mm

**6**

Turn on the mains water supply, letting the water flow for a few minutes to flush through the system.

Alternative Installation for Surfaces Out of Tolerance/Extra Stability

**1**

Turn the hexagonal key anti-clockwise to remove the back nut from the EasyFit Base.

6.0 mm

**2**

Feed the base through the sink hole from the top.

**3**

**REMEMBER**  
Make sure the base is centralised when viewed from the front of the tap

Feed the Reinforcing Plate, (if required) and Back nut up to the underside of the sink.

**4**

Turn the hexagonal key clockwise to secure the EasyFit Base.

6.0 mm

**5**

**4**

Proceed to Step 4 of the Installation Steps.

**Love Your Chrome**

Bristan offers an effective chrome-friendly cleaning kit for use with your taps and showers. Scan the QR Code or search for 'CLEAN KIT01' on [www.bristan.com](http://www.bristan.com).

Troubleshooting

| Symptom                  | Cause(s)  | Remedy   |
|--------------------------|---|--|
| No flow or low flow rate | Partially closed isolation valve.   | Open isolation valve.  |
|                          | Instantaneous water heater cycles on and off as flow rate or pressure is too low.                                 | Increase water flow rate or pressure through system.   |
|                          | Head of water is below the minimum distance required.   | Refer to your the Specification for the minimum working pressure/distance required.  |
|                          | Hot or cold water being drawn off elsewhere causing pressure changes or instantaneous boiler temperature changes. | Do not use other water outlets when using the taps.  |
|                          | Airlock or partial blockage in the supply pipework or hoses.  | Flush through pipework to ensure removal of debris and any airlocks.   |
|                          | Water supply failure  | Investigate water supply. Check your plumbing and heating systems for any faults.  |
| Water dripping from taps | This is normal for a short time after using the taps.   | This is caused by residual water tension, the build up of water in the tap body.   |
|                          | If water continues to drip, possibly due to the ceramic disc valves/cartridge                                     | Refer to the Maintenance section or visit <a href="http://www.youtube.com/BristanTV">www.youtube.com/BristanTV</a> to watch the procedure. |
| Taps do not turn on      | Closed isolation valve.   | Open isolation valve.  |
|                          | Mains water supply turned off.  | Turn on mains water supply.  |
| Wobbly Tap               | Grub screws are not tight enough at the base  | Ensure the grub screws are fully tightened against the base  |
|                          | Extra security may be required depending on the surface the tap is fitted on to.                                  | Refer to the Alternative Installation steps in order to fit the Reinforcing Plate.   |

Maintenance - Cleaning/Replacing Outlet

**1**

**IMPORTANT**  
Isolate the water supply before starting!

Remove the anti-splash.

**2**

Clean and replace as necessary. Secure the anti-splash.

**3**

Turn on the mains water supply, letting the water flow for a few minutes to flush through the system.

At Bristan, we want to make things as easy as possible for our customers. That's why we offer solid guarantees on all our products, effective from the date of purchase, to give you peace of mind.

To start your free guarantee simply scan the QR code and register your product. Alternatively visit [www.bristan.com/register](http://www.bristan.com/register).

For any other queries, please call our Customer Service on 0330 026 6273 where our expert team of advisors will be able to offer you any help and advice.

For full guarantee terms and conditions visit [www.bristan.com/guarantees](http://www.bristan.com/guarantees).

*We Know & We Care*