

# DOCM-T3 B

## COMMERCIAL Shower Range DOCM WC pack Blue with TMV3 SOLO tap



### Features:

- Blue Corrosion resistant aluminium construction grab rails
- LANTAC approved, left or right handed single box solution
- Vandal resistant grab rail design
- DocM compliant
- Close Coupled WC and Cistern included
- Sequential TMV3 SOLO basin mixer tap included

### Product Certifications:



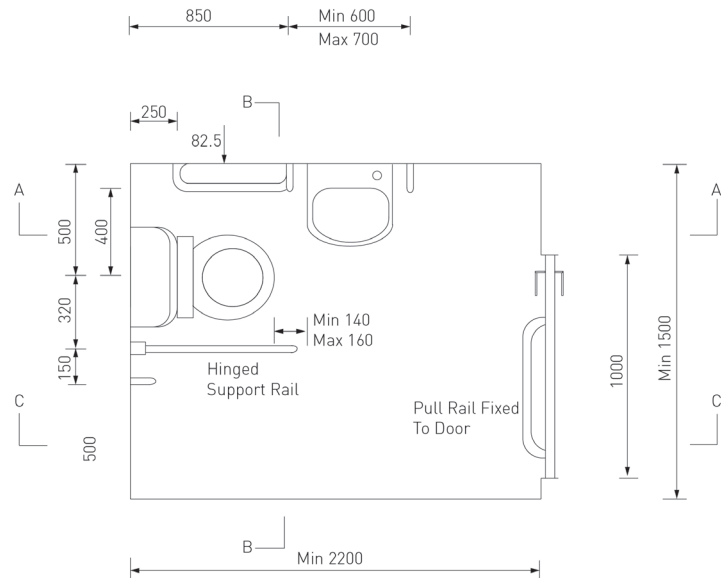
For more products, visit our website:  
<http://www.bristan.com>



### Specification

Style:	Commercial
Product Type:	DOCM
Finish/Colour:	Blue
Main Construction Material:	Vitaceous China/Aluminium
Mount Type:	Wall Mounted
Handle Type:	Lever Handle
Flush Type:	Single Flush
Flush Volume:	6ltr Single Flush
Cistern Capacity:	6ltr
Connection Inlet:	15mm Copper Tails
Number of Tap Holes Required:	1
Valve/Cartridge Type:	Thermostatic Cartridge
Plumbing System Suitability:	Suitable for all plumbing systems
Working Pressure Range: (Bar)	Min. 0.2 - Max. 5.0
Maximum Hot Water Temperature: (C°)	65
Maximum Static Pressure: (Bar)	10
Flow Type:	Single Flow
Connection Outlet:	N/A
Isolation Included:	No

### Dimensions (measurements in mm)



### Flow Rates (l/min)

System Pressure (bar)	0.2	0.5	1	2	3	5
DOCM-T3 B	1.1	1.7	2.4	3.3	4.1	5.3

## TECHNICAL DATA SHEET



# BRISTAN

D8