

# BRISTAN

## Installation Instructions & User Guide

Please leave these instructions  
with the end user

Product Code: CNN EFSNK C (D5)

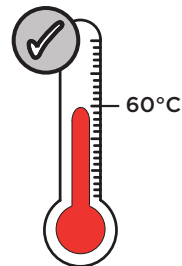
### Dynamic Water Pressure

Min: 0.3 bar Max: 5.0 bar



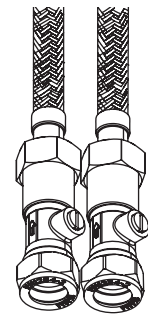
Maximum Static Pressure: 10.0 bar

### Inlet Water Temperature



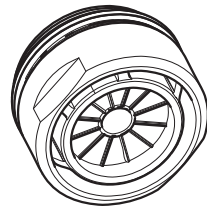
Maximum Hot 60°C

### Inlet Connections



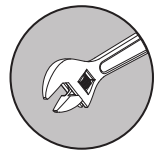
1/2" BSP  
Flexible Tails  
with Isolation  
Valves  
  
Non-Return  
Valves  
Included

### Outlet



M24 Housed  
Flow Straightener

### Tools You'll Need



Adjustable Spanner



Hexagonal Keys

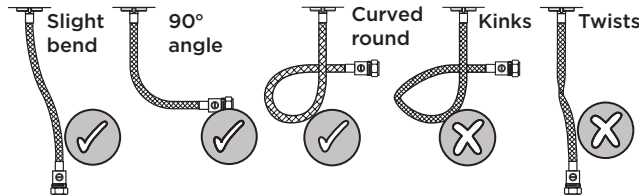


Hexagonal Keys



EasyFit Tool

### Flexible Connecting Pipes



### Prior to Installation

All products manufactured and supplied by Bristan are safe to use provided that they are installed, operated and receive regular maintenance in accordance with these instructions.

This product needs to be installed in accordance with, and meet the requirements of The Water Supply (Water Fittings) Regulations (Northern Ireland) 2009 and The Water Supply (Water Fittings) (Scotland) Byelaws 2014.

For full Installation Requirements & Notes (IRN) please visit [www.wrasapprovals.co.uk/approvals-directory](http://www.wrasapprovals.co.uk/approvals-directory)

Isolation valves must be fitted to the inlet water supplies to ensure ease of future maintenance.

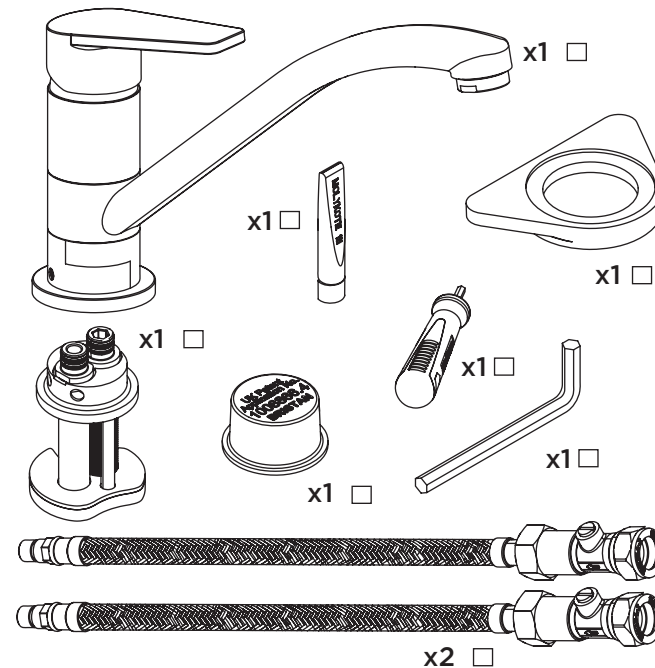
Before installing this product the water supply must be thoroughly flushed in order to remove any swarf, solder etc. Full access must be made available for future maintenance/servicing purposes.

This product must not be modified in any way as this will invalidate the guarantee.

If in doubt, contact a registered plumber, your Local Water Authority or the Secretary of the Institute of Plumbing, address as follows:-

The Institute of Plumbing,  
64 Station Lane,  
Hornchurch,  
Essex,  
RM12 6NB, Tel: 01708 472791

### Pack Contents



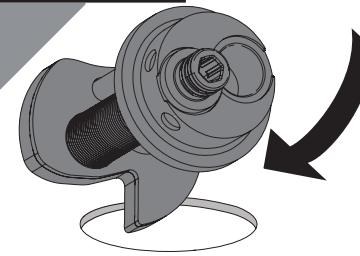
### Spare Parts

To replace any spare parts  
for your tap, why not  
scan the QR Code or  
visit [www.bristan.com](http://www.bristan.com)  
and search for your product.

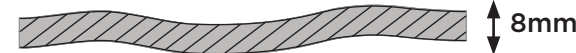


### Installation

1

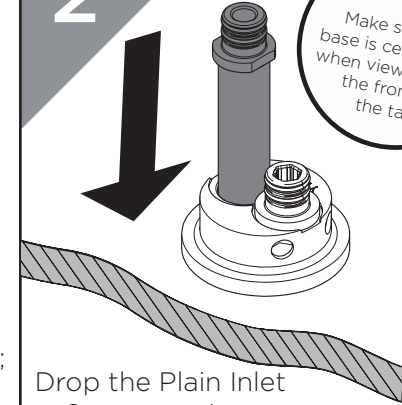


Feed the base  
through the  
sink hole from  
the top.



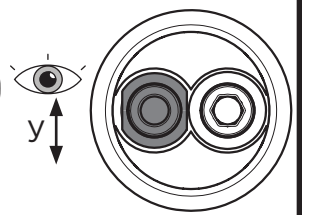
If the surface the tap is being fitted to is over 8mm;  
or you feel the tap needs extra stability, follow the  
**alternative installation steps** overleaf.

2

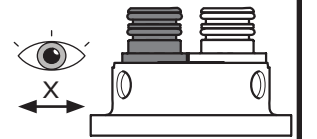


Drop the Plain Inlet  
Connector into  
the base.

**REMEMBER**  
Make sure the  
base is centralised  
when viewed from  
the front of  
the tap

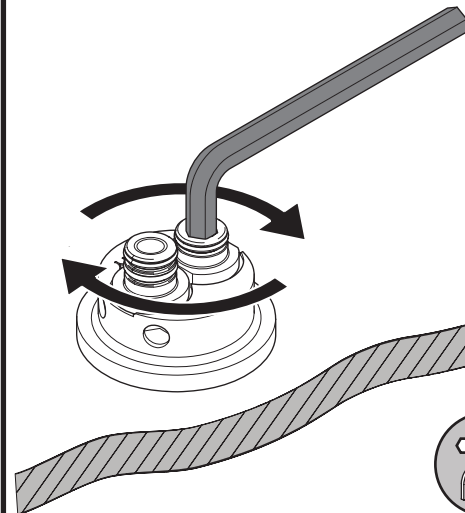


Ensure flat area of the  
plain inlet connector  
sitting flush adjacent to  
threaded inlet connector

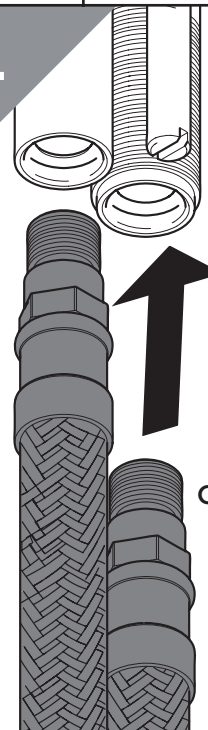


3

Turn the hexagonal  
key clockwise until  
the base is secured.



4



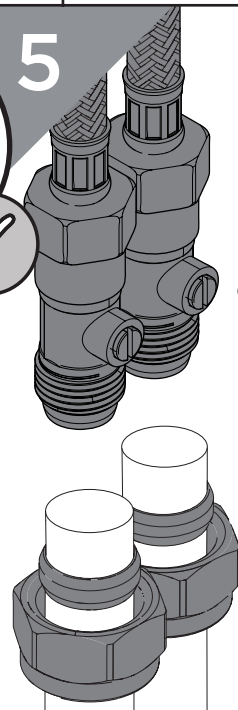
**REMEMBER**  
hot on the  
left, cold on  
the right

Screw the  
flexible tails  
into the base.

**DO NOT  
OVER-TIGHTEN**



5

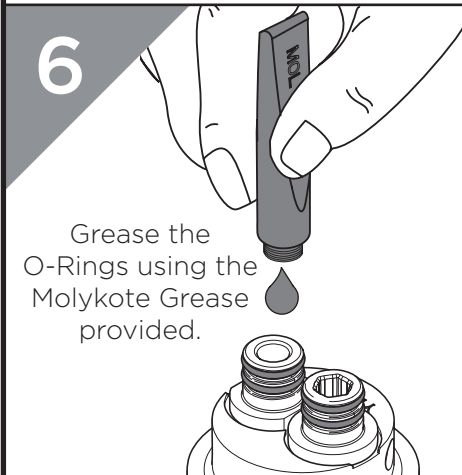


Connect the hot and  
cold water connections.

Olive  
Compression Nut

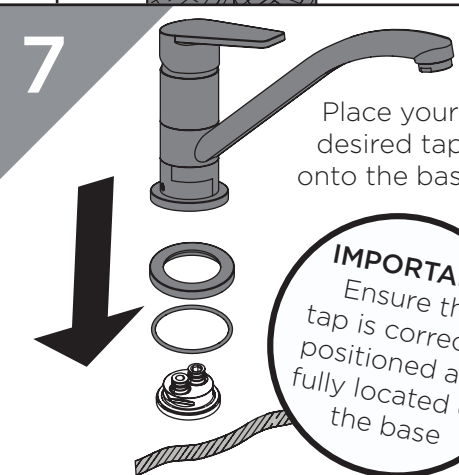


6



Grease the  
O-Rings using the  
Molykote Grease  
provided.

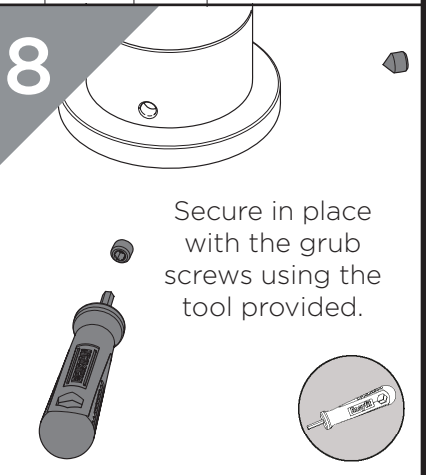
7



Place your  
desired tap  
onto the base.

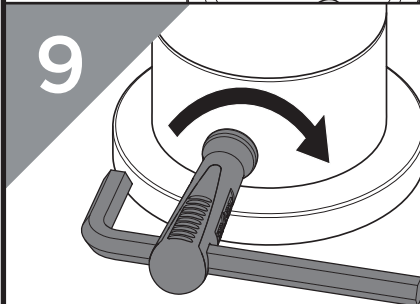
**IMPORTANT**  
Ensure the  
tap is correctly  
positioned and  
fully located on  
the base

8

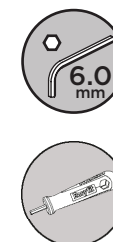


Secure in place  
with the grub  
screws using the  
tool provided.

9



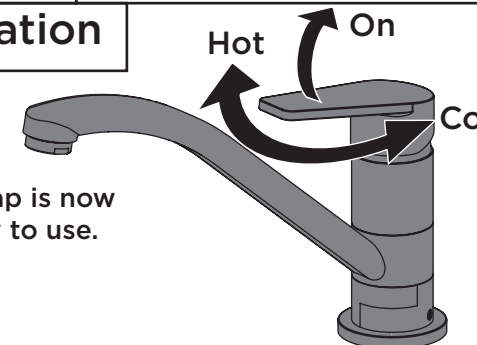
Thread the  
hexagonal key  
through the  
EasyFit tool and  
tighten the grub  
screws with an  
extra 1/2 turn.



### Operation

Hot On Cold

Your tap is now  
ready to use.



### Alternative Installation for Surfaces Out of Tolerance/Extra Stability

1

Turn the hexagonal key anti-clockwise to remove the back nut from the EasyFit Base.

2

Feed the base through the sink hole from the top.

**REMEMBER**  
Make sure the base is centralised when viewed from the front of the tap

3

Feed the Reinforcing Plate (if required) and Back nut up to the underside of the sink.

4

Turn the hexagonal key clockwise to secure the EasyFit Base.

5

Proceed to Step 4 of the Installation Steps.

6.0 mm

### Maintenance - Replacing Cartridge

1

Remove cap and grub screw. Remove handle.

2

Remove shroud and retaining nut. Remove cartridge.

3

Reverse the steps to replace the cartridge.

Replacement cartridges can be found by scanning the QR code on the front page

2.5 mm

### Maintenance - Cleaning/Replacing Outlet

1

Remove the anti-splash.

2

Clean and replace as necessary.

3

Secure the anti-splash.

4

Turn on the mains water supply, letting the water flow for a few minutes to flush through the system.

### General Cleaning

Bristan products are made from premium materials, with hand polished, PVD, EPD or electroplated finishes.

Your tap should be regularly cleaned with warm water, a mild pH-neutral liquid soap, and polished with a soft cloth. Any residues from soap, toothpaste, shampoos and shower gels can cause blemishes if not rinsed off straight after use.

Household bleaches and cleaners contain harsh chemicals and may damage the surface finish. Avoid using abrasive cloths, scouring pads, scrub sponges, steel wool or anything similar.

Some surfaces such as nickel and pewter may be affected by the dye found in some cloths, so it is also important to avoid hanging cloths on spouts.

Troubleshooting		
Symptom	Cause(s)	Remedy
No flow or low flow rate	Partially closed isolation valve.	Open isolation valve.
	Head of water is below the minimum distance required.	Refer to your the Specification for the minimum working pressure/distance required.
	Hot or cold water being drawn off elsewhere causing pressure changes or instantaneous boiler temperature changes.	Do not use other water outlets when using the taps.
	Airlock or partial blockage in the supply pipework or hoses.	Flush through pipework to ensure removal of debris and any airlocks.
	Water supply failure	Investigate water supply. Check your plumbing and heating systems for any faults.
Water dripping from taps	This is normal for a short time after using the taps.	This is caused by residual water tension, the build up of water in the tap body.
	If water continues to drip, possibly due to the ceramic disc valves/cartridge	Refer to the Maintenance section to replace the valves/cartridge.
Taps do not turn on	Closed isolation valve.	Open isolation valve.
	Mains water supply turned off.	Turn on mains water supply.
Wobbly Tap	Grub screws are not tight enough at the base	Ensure the grub screws are fully tightened against the base
	Extra security may be required depending on the surface the tap is fitted on to.	Refer to the Alternative Installation steps in order to fit the Reinforcing Plate.

### Notes

Please use this space for any notes you or your installer may have regarding the installation/plumbing of this product.

### Contact Us

**Bristan Group Ltd.**  
A Masco Company

**UK:** Bristan Group,  
Pooley Hall Drive,  
Birch Coppice Business Park,  
Dordon, Tamworth  
B78 1SG.

**EU:** Masco Europe S.à.r.l.  
14 Rue Strachen  
6933 Mensdorf  
Luxembourg

**Email Us:** [enquire@bristan.com](mailto:enquire@bristan.com)  
**Website:** [www.bristan.com](http://www.bristan.com)  
**Call Us:** +44330 026 6273

Part of **BRISTAN GROUP**

### Our Guarantee

At Bristan, we want to make things as easy as possible for our customers. That's why we offer solid guarantees on all our products, effective from the date of purchase, to give you peace of mind.

To start your free guarantee simply scan the QR code and register your product. Alternatively visit [www.bristan.com/register](http://www.bristan.com/register).

For any other queries, please call our Customer Service on 0330 026 6273 where our expert team of advisors will be able to offer you any help and advice.

For full guarantee terms and conditions visit [www.bristan.com/service-centre/guarantees](http://www.bristan.com/service-centre/guarantees).