

# BRISTAN

TAPS & SHOWERS

## Installation Instructions & User Guide

Please leave these instructions  
with the end user

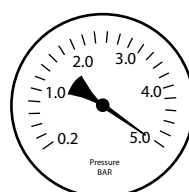
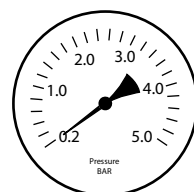
Product code: VAL BAS C CD (D2)

### Specifications

#### Dynamic Water Pressure

Min: 0.2 bar

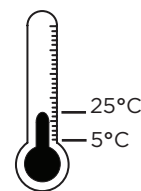
Max: 5.0 bar



Maximum Static Pressure: 10.0 bar

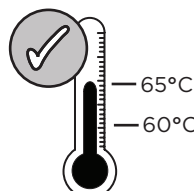
#### Inlet Water Temperature

##### Cold Water Supply

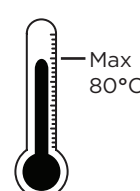


Min: 5°C Max: 25°C

##### Hot Water Supply

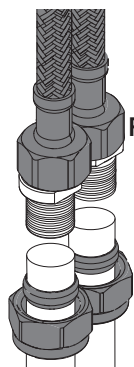


60-65°C  
recommended



80°C  
Maximum

#### Inlet Connections



22mm  
Flexible Tails

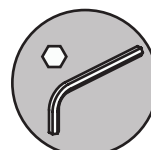
### Tools You'll Need



Phillips Screwdriver



Adjustable Spanner



Hexagonal Keys

### Prior to Installation

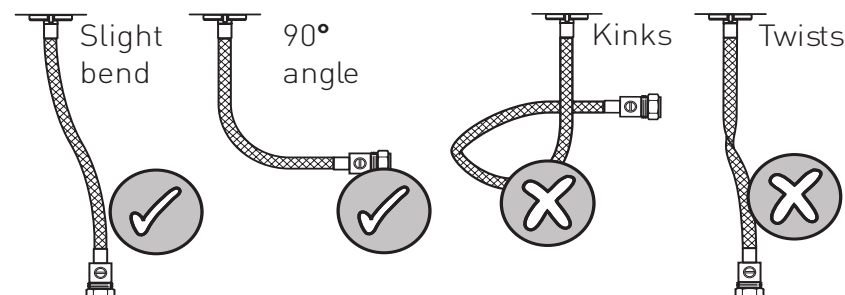
All products manufactured and supplied by Bristan are safe provided they are installed, used correctly and receive regular maintenance in accordance with these instructions.

This product has been tested to the Water Regulations Advisory Scheme (WRAS) and satisfies the requirements of the Water Supply (Water Fittings) Regulations 1999 and current bylaws. For full Installation Requirements & Notes (IRN) please visit [wras.co.uk/directory](http://wras.co.uk/directory).

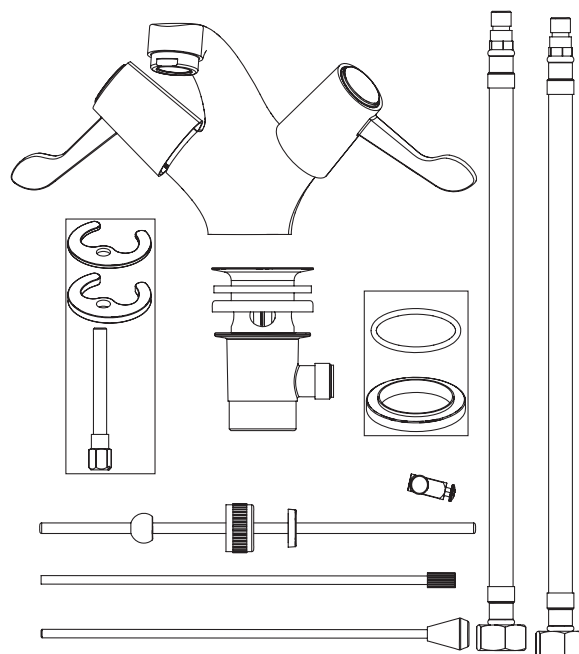
We recommend isolation valves to be fitted to the inlet water supplies to ensure ease of future maintenance.

Before installing these taps the water supply must be thoroughly flushed in order to remove any swarf, solder etc.

This product must not be modified in any way as this will invalidate the guarantee.



### Pack Contents

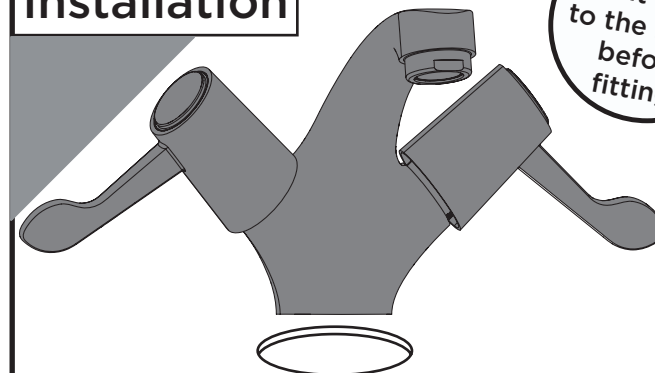


### Spare Parts

To replace any spare parts  
for your tap, why not  
scan the QR Code or  
visit [www.bristan.com](http://www.bristan.com)  
and search for your product.



### Installation



TIP  
Prefit mixer  
to the basin  
before  
fitting.

2

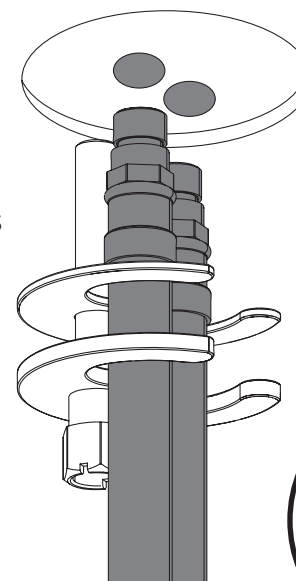
Secure the tap to the  
sink using the fixing kit



Fit the tap to the sink.

3

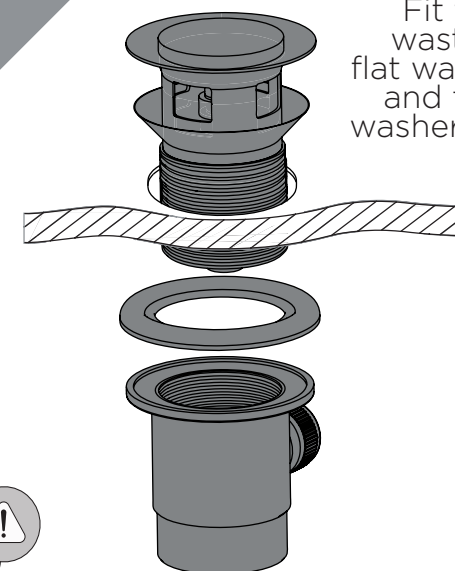
Fit the inlet  
connection tails  
to the base by  
hand only.  
**DO NOT  
OVERTIGHTEN**



REMEMBER  
Hot on the  
left, cold on  
the right!

4

Fit the pop up  
waste, with the  
flat washer below  
and the shaped  
washer above the  
basin.



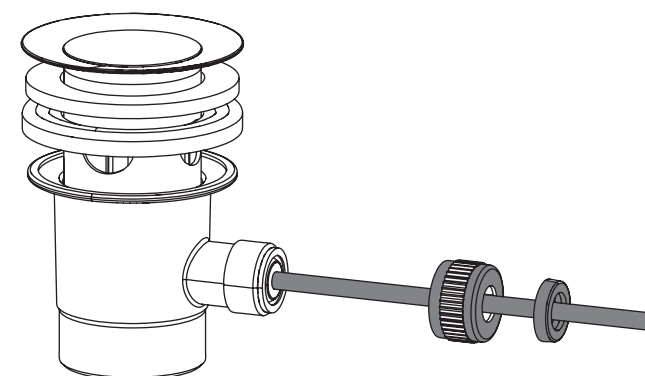
IMPORTANT  
Turn on water  
supply for a few  
minutes and check  
all joints and  
connections for  
any leaks.

6

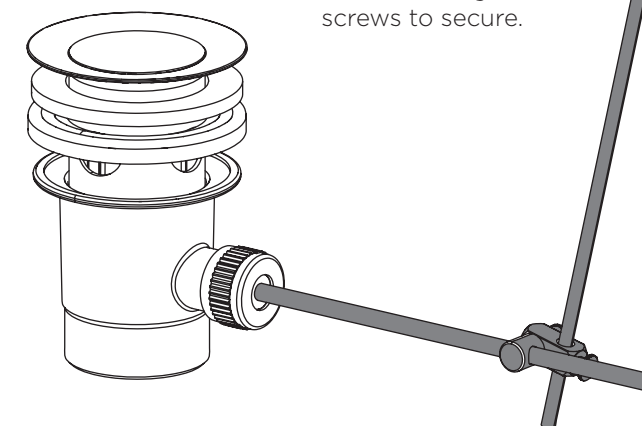
Push the vertical  
rod through the  
back of the basin  
tap.

Connect the rods  
using the pop up  
connector. Tighten  
screws to secure.

5

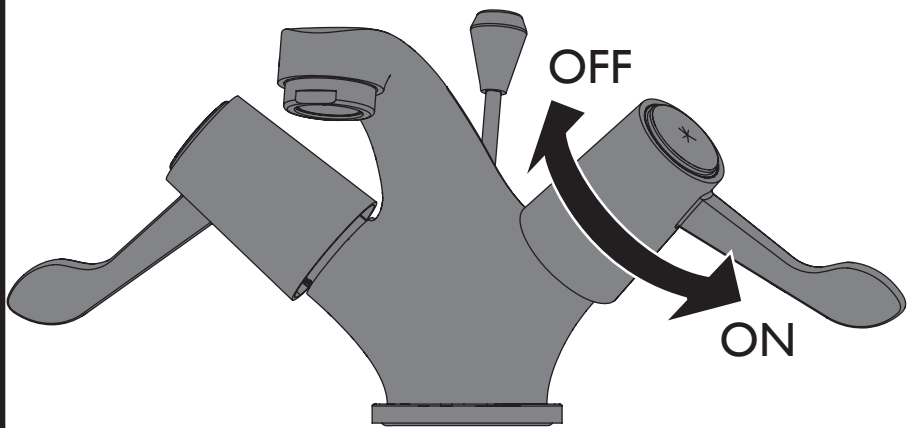


Place the washer and waste body plate  
onto the horizontal arm. Screw the waste  
body plate onto the lower waste body.



Operation

Pull the rod up to seal the plug.  
Push it down to release.



General Cleaning

Bristan products are made from premium materials, with hand polishing and electroplated finishes.

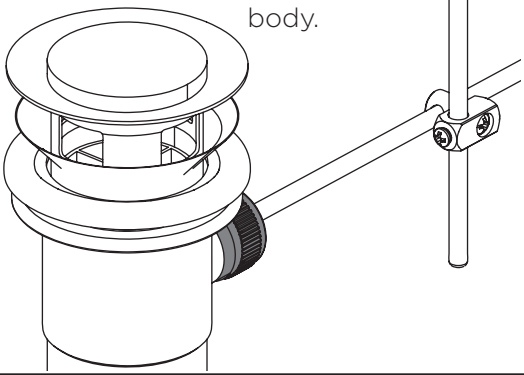
Your taps or shower should be regularly cleaned with warm water, a mild pH-neutral liquid soap, and polished with a soft cloth. Any residues from soap, toothpaste, shampoos and shower gels can cause blemishes if not rinsed off straight after use.

Household bleaches and cleaners contain harsh chemicals and may damage the surface finish. Avoid using abrasive cloths, scouring pads, scrub sponges, steel wool or anything similar.

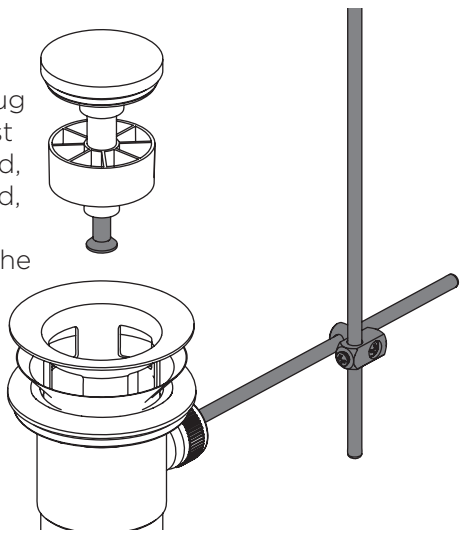
Some surfaces such as nickel and pewter may be affected by the dye found in some cloths, so it is also important to avoid hanging cloths on spouts.

Adjusting the Waste

Adjust the friction for the waste mechanism by using the waste cap body.



To set the plug height adjust the waste rod, operating rod, connecting bracket and the screw.



Maintenance - Cartridge Cleaning

1

Remove handles

Isolate the water supply before starting!

2

Remove the valves using a suitable spanner.

3

Place valves in a suitable solution and soak until fully de-scaled.

4

Replace the valves.

5

Replace the handles.

6

Love Your Chrome

Bristan offers an effective chrome-friendly cleaning kit for use with your taps and showers. Scan the QR Code or search for 'CLEAN KIT01' on [www.bristan.com](http://www.bristan.com).



Turn on the mains water supply, letting the water flow for a few minutes to flush through the system.

Troubleshooting

Symptom	Cause	Remedy
No flow or low flow rate	Partially closed isolation valve.	Open isolation valve.
	Instantaneous water heater cycles on and off as flow rate or pressure is too low.	Increase water flow rate or pressure through system.
	Head of water is below the minimum distance required.	Refer to specification for minimum distance required.
	Hot or cold water being drawn off elsewhere causing pressure changes or instantaneous boiler temperature changes.	Do not use other water outlets when using the taps.
	Airlock or partial blockage in the supply pipework.	Flush through pipework to ensure removal of debris and any airlocks.
Water dripping from taps	This is normal for a short time after using the taps.	This is caused by residual water tension, the build up of water in the tap body.
	If water continues to drip, possibly due to the ceramic disc valves	Remove valves and clean, refer to 'Maintenance' section before starting any maintenance.
Taps do not turn on	Closed isolation valve.	Open isolation valve.
	Mains water supply turned off.	Turn on mains water supply.

Notes

Please use this space for any notes you or your installer may have regarding the installation/plumbing of this product.

At Bristan, we want to make things as easy as possible for our customers. That's why we offer solid guarantees on all our products, effective from the date of purchase, to give you peace of mind.

To start your free guarantee simply scan the QR code and register your product. Alternatively visit [www.bristan.com/register](http://www.bristan.com/register) to register your product via a computer. For full guarantee terms and conditions visit [www.bristan.com/guarantees](http://www.bristan.com/guarantees).



We Know & We Care