

---

# BRISTAN

---

## Installation Instructions and User Guide

Bright Tap Range

### Models Covered:

BRG 3HBAS C, BRG 3HBF C,  
BRG WMBAS C, BRG WMBF C

**Please keep this booklet for future  
reference.**

**Installer, when you have read these  
instructions please ensure you leave  
them with the user.**

# Contents

Thank you for choosing Bristan, the UK's leading taps and showers expert.

We have designed this product with your enjoyment in mind. To ensure that it works to its full potential, it needs to be fitted correctly. These fitting instructions have been created to give you all of the information you need and, if you need any further help, please do not hesitate to contact us.

## Contents

- Important Safety Information **3**
- Specification **4**
- Installation - 3 Hole Basin Mixer/Bath Filler **5**
- Installation - Wall Mounted Basin Mixer/Bath Filler **6-7**
- General Cleaning **8**
- Maintenance **8-9**
- Troubleshooting **9**
- Notes **10-11**

# Important Safety Information

- Please read these instructions thoroughly and retain for future use.
- All products manufactured and supplied by Bristan are safe provided they are installed, used correctly and receive regular maintenance in accordance with these instructions.
- **If you are in any doubt about your ability to install this product safely you must employ the services of an experienced qualified plumber.**
- This product needs to be installed in accordance with, and meet the requirements of the Water Supply (Water Fittings) Regulations 1999 and current by-laws. For full Installation Requirements & Notes (IRN) please visit [wras.co.uk/directory](http://wras.co.uk/directory).
- Isolation valves must be fitted to the inlet water supplies to ensure ease of future maintenance.
- Before installing this product the water supply must be thoroughly flushed in order to remove any swarf, solder etc. Full access must be made available for future maintenance/servicing purposes.



**Warning:** Before starting any installation please consider the following: Before drilling into walls, check that there are no hidden electrical wires, cables or water supply pipes. This can be checked with the aid of an electronic detector.

If power tools are used do not forget to:

- Wear eye protection
- Unplug equipment after use

- This product must not be modified in any way as this will invalidate the guarantee.
- If in doubt, contact a registered plumber, your Local Water Authority or the Secretary of the Institute of Plumbing, address as follows:-

The Institute of Plumbing,  
64 Station Lane,  
Hornchurch,  
Essex,  
RM12 6NB, Tel: 01708 472791

# Specification

Product Code	Working Pressure		Inlet
	Min	Max	
BRG 3HBAS C	0.3	5.0	15mm Compression Threaded Tail
BRG 3HBF C	0.3	5.0	3/4" BSP Threaded Tail
BRG WMBAS C*	0.2	5.0	15mm Compression Threaded Tail
BRG WMBF C*	0.2	5.0	22mm Compression Threaded Tail

**Cavity Depth:** 47mm (\*applies to these products only)

**Maximum Static Pressure:** 10.0 bar

### System Requirements:

Gravity fed hot & cold (Equal pressures)

Gravity fed hot & cold (Differential pressure, maximum ratio 5:1)

Unvented systems

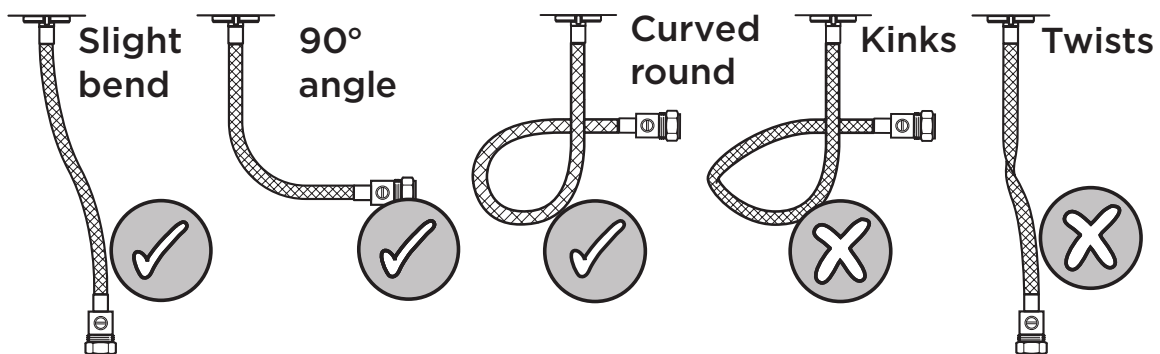
Instantaneous water heater (Combination boiler)

If the product is installed at low pressure (tank fed), then the minimum distance from the highest installed position of the outlet to the underside of the cold tank should be at least 2 metres to ensure adequate performance. Where the supplies are unbalanced, e.g. Hot water from cylinder tank/cold from the mains, WRAS approved check valves must be fitted in the supply pipes.

**Note:** BRG 3HBF C and BRG 3HBAS C require 3 metres if installed on a low pressure system.

### Flexible Connecting Pipes:

Care must be taken when connecting the flexible connection pipes to the household pipework to ensure they do not bend sharply, kink or twist. Failure to follow these guidelines may result in poor performance and damage to the flexible connecting pipes. See below for recommended ways to fit the flexible connecting pipes:



# Installation - 3 Hole Basin Mixer/Bath Filler

1. Unscrew the locking nut from the side bodies.

2. With the backnut, metal and rubber washers fitted to the side body threaded tails, feed the side body through the hole in the basin/bath from underneath.

3. Screw the locking nut onto the valve, ensuring the washer is fitted between the locking nut and basin / bath, onto the threaded tail and tighten backnut underneath onto the bottom of the basin/bath. The screws on the backnut allow for any uneven surfaces and should be tightened up to the metal washer. Replace the handle, grub screw and the rubber cap.

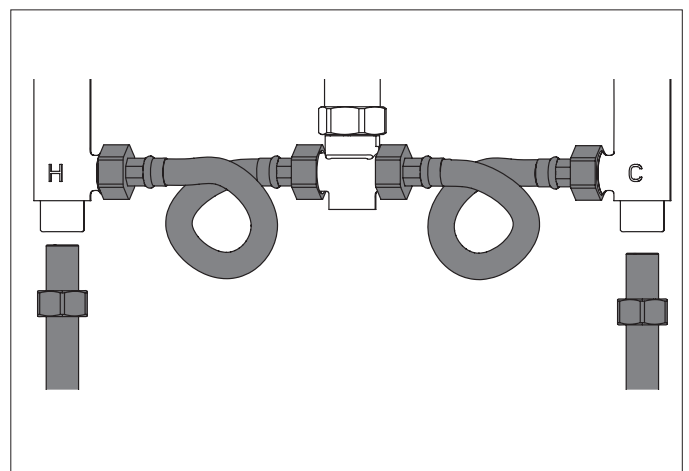
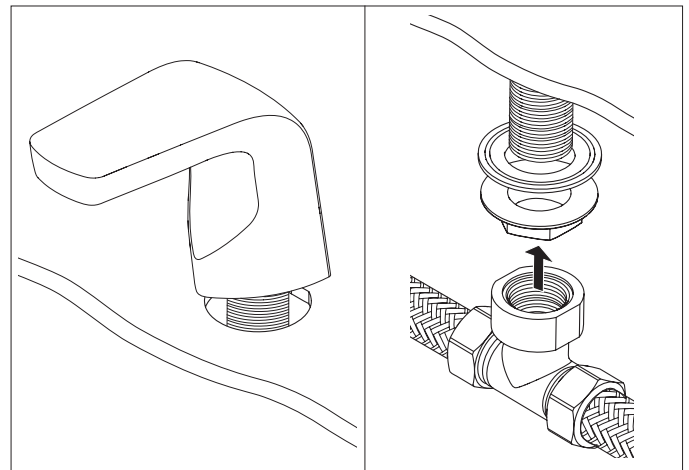
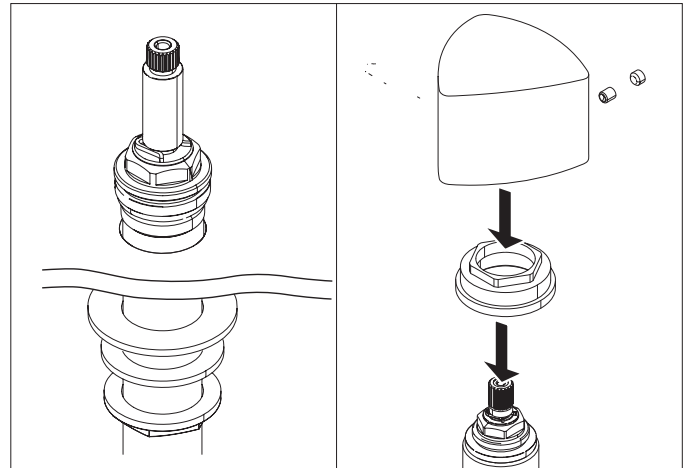
4. Fit the spout to the basin/bath tightening the backnut. The screws on the backnut allow for any uneven surfaces and should be tightened up to metal washer.

5. Attach the T- joint assembly and connect to the side bodies (hot on the left, cold on the right when viewed from the front), by using flexible connecting pipes supplied.

6. Connect the hot and cold water supplies to the side bodies (hot to the left, cold on the right hand side), fully open both valves, letting the water run for a few minutes to flush the system. Loop the tails around if necessary to fit.

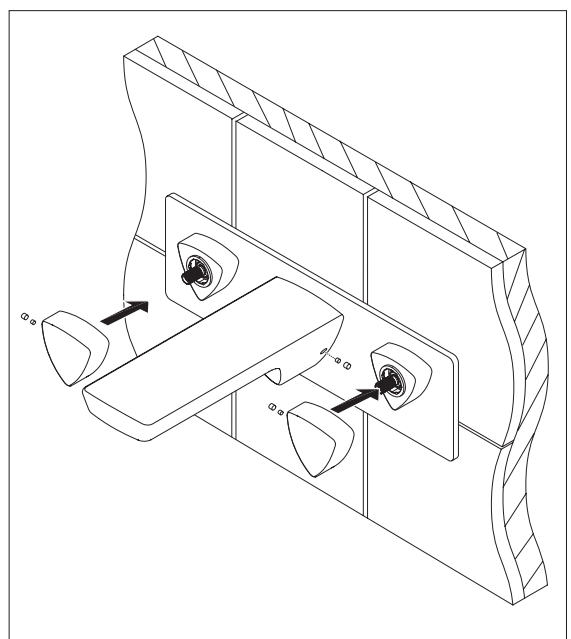
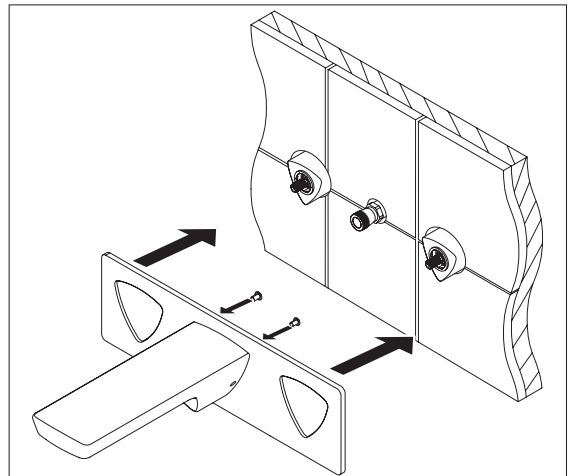
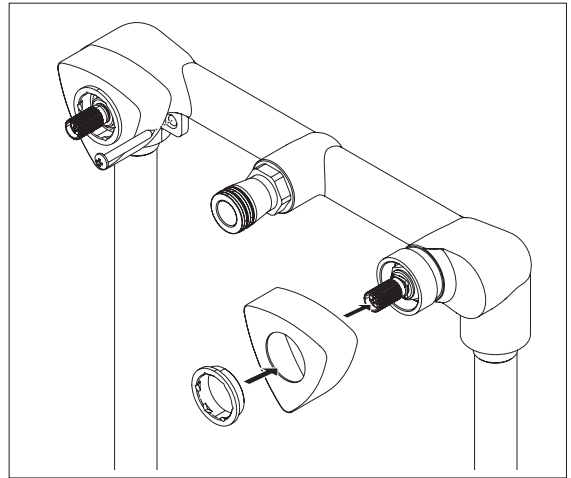
7. Fit the clicker waste (**basin mixer only**) ensuring the rubber washer is fitted between the basin and the waste. Place the other rubber washer under the basin and secure in place by tightening the backnut. In order to fill the basin, the button in the middle of the waste needs to be pressed down. To release the water, press the button again.

8. Check all joints and connections for leaks.



# Installation - Wall Mounted Basin Mixer/Bath Filler

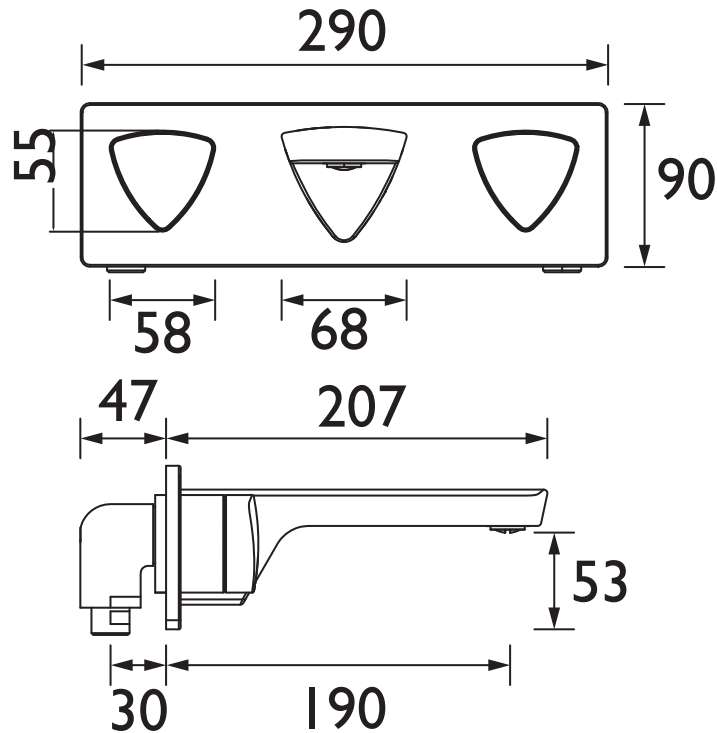
1. Decide on the final position of the basin mixer/ bath filler. Install suitable battons into the wall cavity if required to support the tap body.
2. Plumb the hot and cold water supply pipes to the required position.
3. Secure mixer body using the screws and wall plugs supplied.
4. Attach the supply pipework to the hot and cold inlets (hot on the left and cold on the right when viewed from the front) ensuring the olive is fitted to the copper pipe work. Tighten the compression nut to secure the pipework and create a water tight seal.  
**Note:** Before finishing the wall surface turn on both water supplies to check for any leaking connections
5. Push the valve shroud onto the valve and secure by using the shroud locking nut.
6. Finish the wall surface.  
**Note:** it is important that a sufficient amount of the spout connecting tube is left exposed to allow the spout to connect.
7. Attach the spout to the concealing plate using the screws supplied.
8. Push the concealing plate over the valve shrouds ensuring the o-rings on the spout connecting tube have located inside the spout. Tighten the grub screw to secure the spout in place and push fit the rubber cap.
9. Push the handles onto the valve spindles. Tighten the grub screws and push fit the rubber cap.
10. Turn on both water supplies and operate the handle letting the water flow for a few minutes to flush the system.



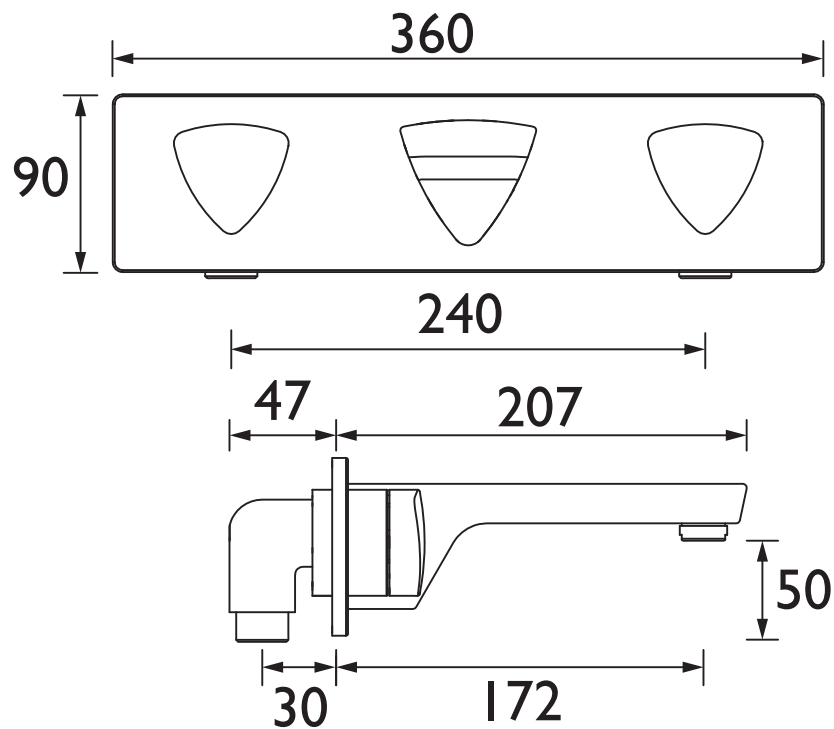
# Installation - Wall Mounted Basin Mixer/Bath Filler

## Dimensions (mm)

BRG WMBAS C



BRG WMBF C



# General Cleaning

Bristan products are made from premium materials, with hand polished, PVD, EPD or electroplated finishes.

Your tap should be regularly cleaned with warm water, a mild pH-neutral liquid soap, and polished with a soft cloth. Any residues from soap, toothpaste, shampoos and shower gels can cause blemishes if not rinsed off straight after use.

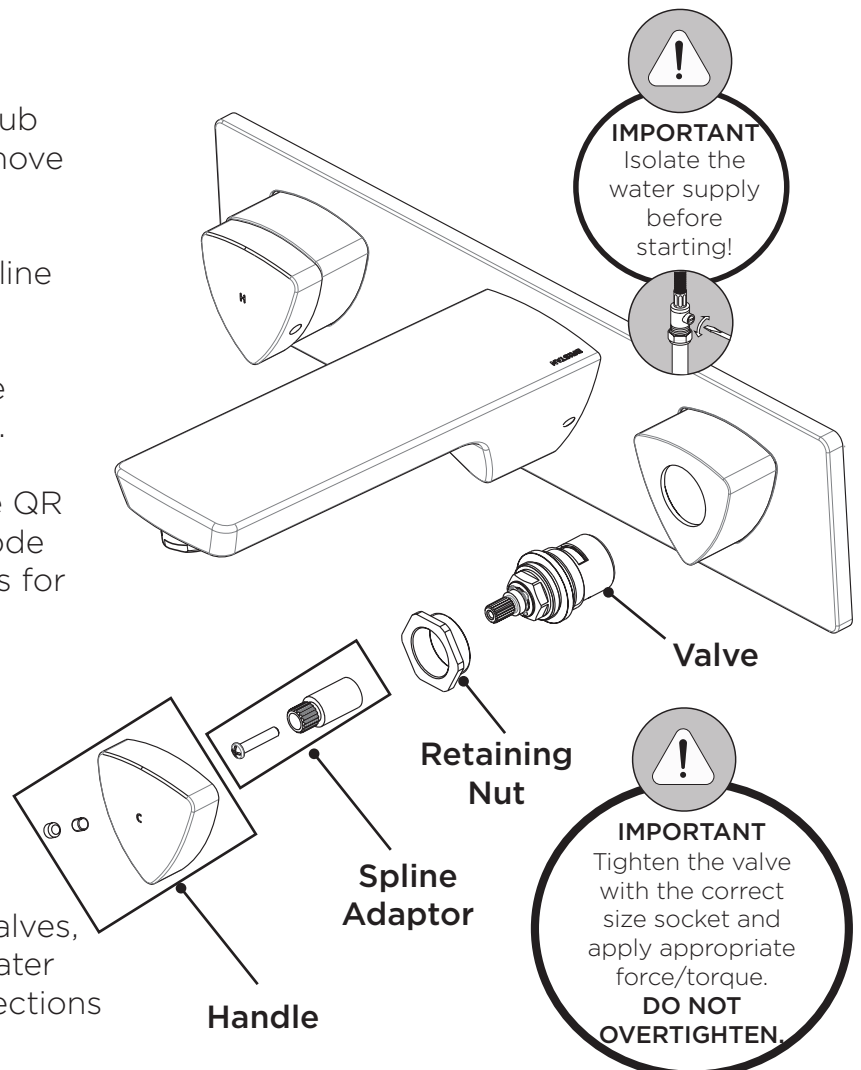
Household bleaches and cleaners contain harsh chemicals and may damage the surface finish. Avoid using abrasive cloths, scouring pads, scrub sponges, steel wool or anything similar.

Some surfaces such as nickel and pewter may be affected by the dye found in some cloths, so it is also important to avoid hanging cloths on spouts.

# Maintenance

## Replacing Valves

1. Prise out the caps and undo the grub screws using a 2,5mm hex key to remove the handles.
2. Undo the screws to remove the spline adaptors.
3. Use a suitable spanner to undo the retaining nuts and remove the valves.
4. Visit [www.bristan.com](http://www.bristan.com) or scan the QR Code and search for your product code to replace the valves and/or adaptors for your tap.
5. Check the spline adaptors for any damage. If necessary, soak in a suitable solution until fully de-scaled. Rinse thoroughly to remove any chemicals and debris.
6. Reverse the steps to replace the valves, adaptors and handles. Turn on the water supply and check all joints and connections for any leaks.





# Maintenance

## Clean/Replace Outlet

### For Basin Fittings:

1. Use a coin to unscrew the outlet and remove with the seal.
2. Check the seals for any damage. Visit [www.bristan.com](http://www.bristan.com) or scan the QR Code and search for your product code to replace the outlet for your tap.
3. If necessary, soak in a suitable solution until fully de-scaled. Rinse thoroughly to remove any chemicals and debris.
4. Reverse the steps to replace the outlet. Turn on the water supply and check all joints and connections for any leaks.

### For Bath Fittings:

1. Undo the housing using a suitable spanner. Remove with the outlet and seal.
2. Check the seals for any damage. Visit [www.bristan.com](http://www.bristan.com) or scan the QR Code and search for your product code to replace the outlet for your tap.
3. If necessary, soak in a suitable solution until fully de-scaled. Rinse thoroughly to remove any chemicals and debris.
4. Reverse the steps to replace the outlet. Turn on the water supply and check all joints and connections for any leaks.

## Troubleshooting

Symptom	Cause	Remedy
<b>No flow or low flow rate</b>	Partially closed isolation valve.	Open isolation valve.
	Head of water is below the minimum distance required.	Refer to specification for minimum distance required.
	Hot or cold water being drawn off elsewhere causing pressure changes or instantaneous boiler temperature changes.	Do not use other water outlets when using the taps.
	Airlock or partial blockage in the supply pipework.	Flush through pipework to ensure removal of debris and any airlocks.
<b>Water dripping from taps</b>	This is normal for a short time after using the taps.	This is caused by residual water tension, the build up of water in the tap body.
	If water continues to drip, possibly due to the ceramic disc valves	Remove valves and clean, refer to 'Maintenance' section before starting any maintenance.
<b>Taps do not turn on</b>	Closed isolation valve.	Open isolation valve.
	Mains water supply turned off.	Turn on mains water supply.

# Notes

# Notes

Issue: D3

Part Number: BRG Book 2

# **BRISTAN**

## **Bristan Group Ltd.**

**UK:** Bristan Group, B78 1SG.

**EU:** Masco Europe S.à.r.l.  
14 Rue Strachen  
6933 Mensdorf  
Luxembourg

**Customer Service:** +44330 026 6273

**Web:** [www.bristan.com](http://www.bristan.com)

**Email:** [enquire@bristan.com](mailto:enquire@bristan.com)

## **A Masco Company**

At Bristan, we want to make things as easy as possible for our customers. That's why we offer solid guarantees on all our products, effective from the date of purchase, to give you peace of mind.

To start your free guarantee simply scan the QR code and register your product.  
Alternatively visit [www.bristan.com/register](http://www.bristan.com/register).

For any other queries, please call our Customer Service on **0330 026 6273** where our expert team of advisors will be able to offer you any help and advice.

For full guarantee terms and conditions visit [www.bristan.com/service-centre/guarantees](http://www.bristan.com/service-centre/guarantees).

