

# BRISTAN

## Installation Instructions & User Guide

Please leave these instructions  
with the end user

Product Code: EVC KIT01 2M Range (D3)

### Specification

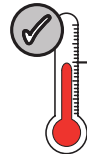
#### Dynamic Water Pressure

Min: 0.2 bar Max: 5.0 bar



Maximum Static Pressure: 10.0 bar

#### Inlet Water Temperature



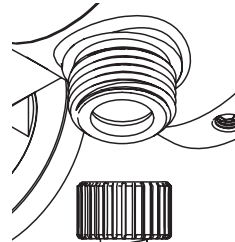
Max Hot: 65°C

#### Riser Centres

470mm  
with Adjustable  
bottom bracket

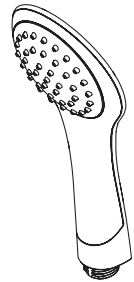


#### Inlet Connection



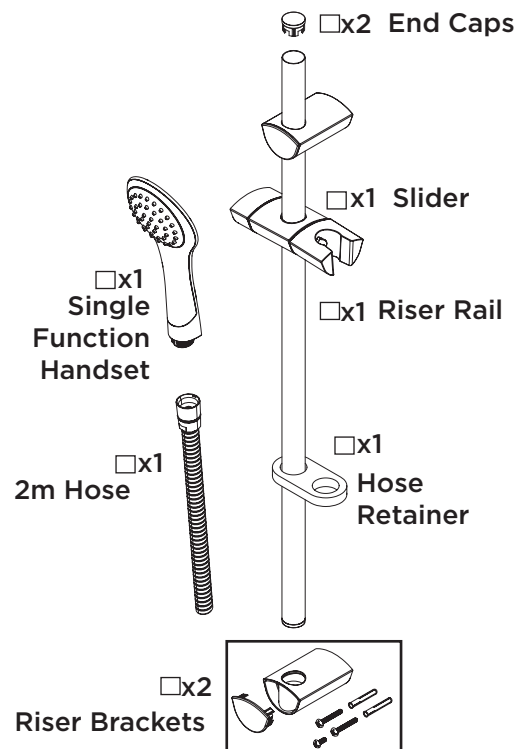
1/2" BSP

#### Outlet Connection

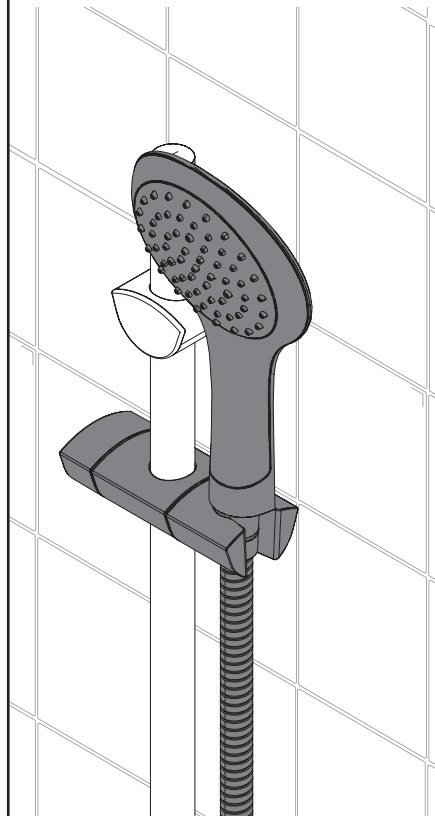


Single Function Handset  
with Rub Clean Nozzles

### Pack Contents



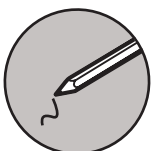
### Operation



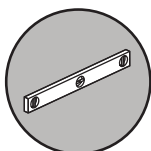
Tilt the knob on the  
slider forward to  
release the lock

Adjust to the  
necessary height  
and return the  
knob to lock.

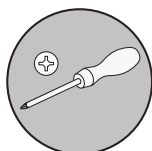
### Tools Required for Installation



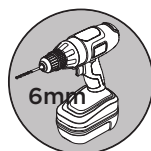
Pencil



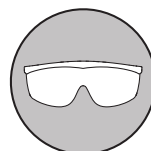
Spirit Level



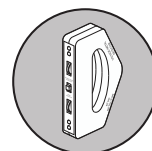
Cross Head  
Screwdriver



Drill



Safety  
Goggles



Electronic  
Detector



Hexagonal  
Keys

# Contents

Thank you for choosing Bristan, the UK’s leading taps and showers expert. We have designed these products with your enjoyment in mind. To ensure that they work to their full potential, they need to be fitted correctly. These fitting instructions have been created to give you all of the information you need and, if you need any further help, please do not hesitate to give us a call on 0330 026 6273.

• Prior to Installation	3
• Adjustable Riser Installation	4-5
• Handset Flow Limiter	6
• Cleaning	6
• Our Guarantee	7
• Notes	7
• Troubleshooting	8
• Spare Parts	8
• Contact	8

# Prior to Installation

All products manufactured and supplied by Bristan are safe to use provided that they are installed, operated and receive regular maintenance in accordance with these instructions.

This product needs to be installed in accordance with, and meet the requirements of The Water Supply (Water Fittings) Regulations (Northern Ireland) 2009 and The Water Supply (Water Fittings) (Scotland) Byelaws 2014.

For full Installation Requirements & Notes (IRN) please visit  
**[www.wrasapprovals.co.uk/approvals-directory](http://www.wrasapprovals.co.uk/approvals-directory)**

Isolation valves must be fitted to the inlet water supplies to ensure ease of future maintenance.

Before installing this product the water supply must be thoroughly flushed in order to remove any swarf, solder etc. Full access must be made available for future maintenance/servicing purposes.



Compare the inlet water temperature of this product to the shower, and any other shower accessories you are installing as part of your set up. Ensure that the lowest maximum inlet water temperature is adhered to when installing your shower.

This product must not be modified in any way as this will invalidate the guarantee.

Full access must be made available for future maintenance/servicing purposes.

Before drilling into walls, check that there are no hidden electrical wires, cables or water supply pipes. This can be checked with the aid of an electronic detector.

If power tools are used do not forget to:




- Wear eye protection
- Unplug equipment after use

If in doubt, contact a registered plumber or your Local Water Authority or the Secretary of the Institute of Plumbing, address as follows:-

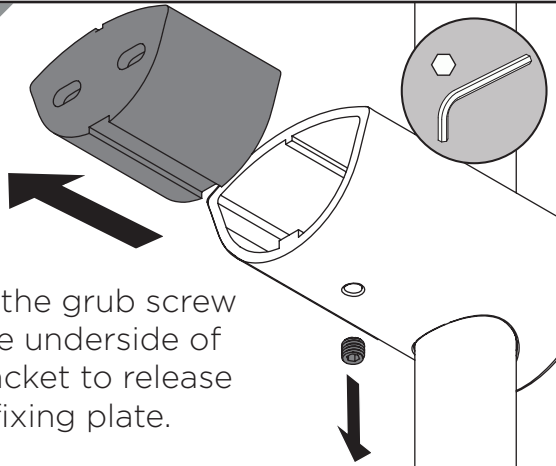
The Institute of Plumbing,  
64 Station Lane,  
Hornchurch,  
Essex,  
RM12 6NB, Tel: 01708 472791

# Adjustable Riser Installation

 PLEASE NOTE - Risers shown in these instructions are for illustration purposes only. Your riser outlet can still be installed by following these instructions.

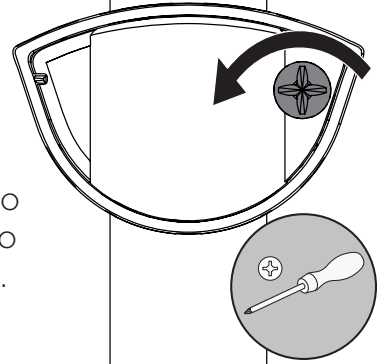
1

Remove the grub screw from the underside of each bracket to release the fixing plate.



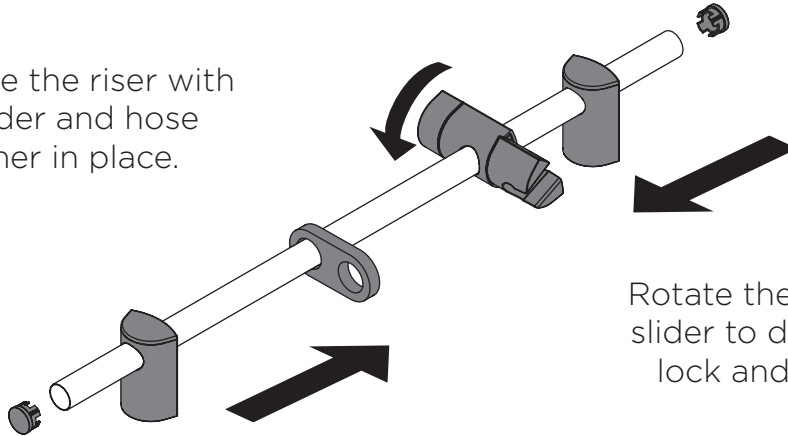
Locate the rail clamp inside of the bracket.

Loosen the screw to allow the bracket to slide along the rail.



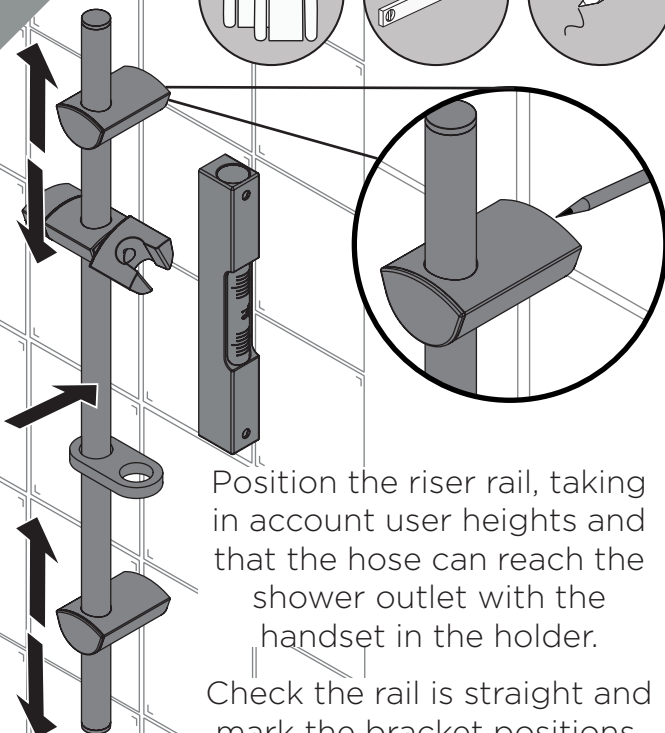
2

Assemble the riser with the slider and hose retainer in place.



Rotate the knob on the slider to disengage the lock and reposition.

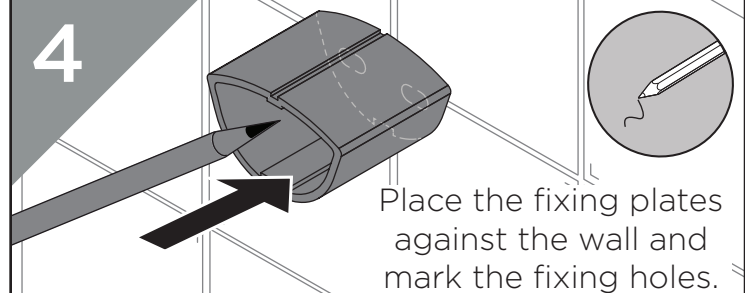
3



Position the riser rail, taking in account user heights and that the hose can reach the shower outlet with the handset in the holder.

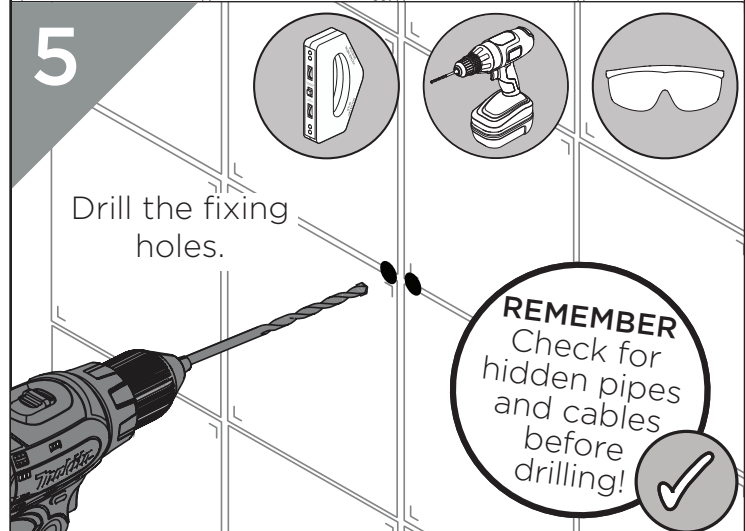
Check the rail is straight and mark the bracket positions.

4



Place the fixing plates against the wall and mark the fixing holes.

5



Drill the fixing holes.

**REMEMBER**  
Check for hidden pipes and cables before drilling!

# Adjustable Riser Installation



PLEASE NOTE - Risers shown in these instructions are for illustration purposes only. Your riser outlet can still be installed by following these instructions.

6

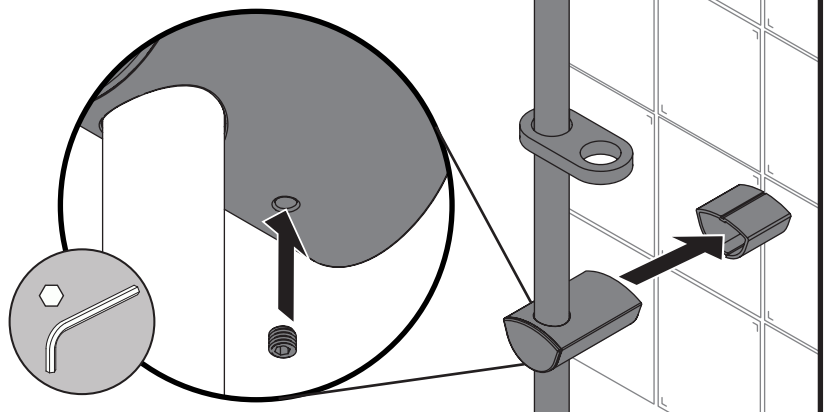
Secure the fixing plates to the wall using the fixings supplied.



7

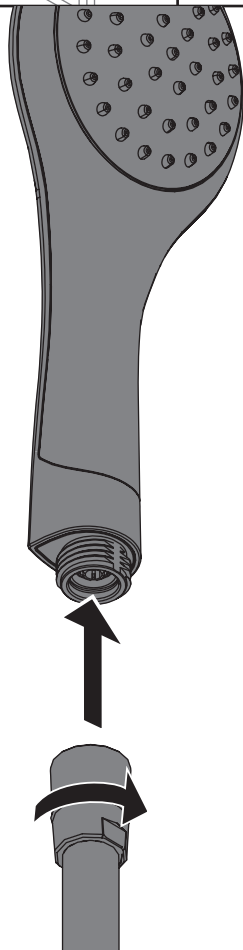
Check riser brackets align with the wall plates and tighten the rail clamps when aligned (see step 1).

Place the riser onto the wall plates and replace the grub screws underneath to secure.



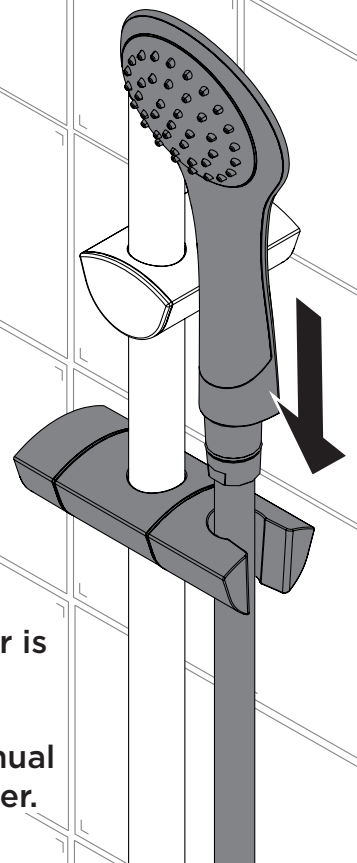
8

Secure the cone end of the hose onto the threaded inlet connection of the handset.



9

Place handset into slider.



Your adjustable riser is now installed.

Refer to shower manual to connect to shower.

# Handset Flow Limiter



PLEASE NOTE - Handsets shown in these instructions are for illustration purposes only. Your handset can still be installed by following these instructions.

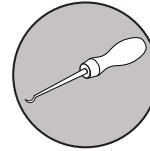
## Flow Limiter Install

To install, firmly push the flow regulator into the threaded end of the handset, smaller diameter first.



## Flow Limiter Remove

To remove, use a small tool with a narrow head to pick out the flow limiter.



### IMPORTANT

Turn on water supply for a few minutes and check all joints and connections for any leaks.

## Cleaning

### General Cleaning

Bristan products are made from premium materials, with hand polished, PVD, EPD or electroplated finishes. Your product should be regularly cleaned with warm water, a mild pH-neutral liquid soap, and polished with a soft cloth. Any residues from soap, toothpaste, shampoos and shower gels can cause blemishes if not rinsed off straight after use.

Household bleaches and cleaners contain harsh chemicals and may damage the surface finish. Avoid using abrasive cloths, scouring pads, scrub sponges, steel wool or anything similar.

### Cleaning The Shower Head

Your Bristan shower head is equipped with rub-clean nozzles for easy cleaning. Simply rub your fingers across the rubber spray jets regularly and before you turn the shower on to remove and scale or debris.

The hardness of the water in your area will determine how often you should clean your shower head. Build up of scale in particularly hard water areas combined with constant use means you may need to clean your shower head weekly. To ensure continued performance, the shower head needs to be regularly de-scaled.

# Our Guarantee

At Bristan, we want to make things as easy as possible for our customers.

That's why we offer solid guarantees on all our products, effective from the date of purchase, to give you peace of mind.

To start your free guarantee simply scan the QR code and register your product. Alternatively visit **[www.bristan.com/register](http://www.bristan.com/register)**.

For any other queries, please call our Customer Service on **0330 026 6273** where our expert team of advisors will be able to offer you any help and advice.

For full guarantee terms and conditions visit **[www.bristan.com/service-centre/guarantees](http://www.bristan.com/service-centre/guarantees)**.



## Notes

Please use this space for any notes you or your installer may have regarding the installation/plumbing of this product.

## Troubleshooting

Symptom	Cause(s)	Remedy
<b>No flow or low flow rate</b>	Partially closed isolation valve.	Open isolation valve.
	Head of water is below the minimum distance required.	Refer to your specific product's Contents Page for the minimum working pressure/distance required.
	Inlet filter in the shower valve is blocked	Refer to the shower fitting instructions for Maintenance steps.
	Hot or cold water being drawn off elsewhere causing pressure changes or instantaneous boiler temperature changes.	Do not use other water outlets when using the taps.
	Airlock or partial blockage in the supply pipework or hoses.	Flush through pipework to ensure removal of debris and any airlocks.
	Shower hose is kinked, causing a blockage.	Un-kink the shower hose and check for any damage, Replace if necessary.
	Water supply failure	Investigate water supply. Check your plumbing and heating systems for any faults.
<b>Water dripping from shower kit</b>	This is normal for a short time after using the shower.	This is caused by residual water tension, the build up of water in the shower kit.
	If water continues to drip, possibly due to the ceramic disc valves/cartridge	Refer to the Maintenance section of your shower instructions to replace the valves/cartridge.

## Spare Parts



To replace any spare parts for your tap, why not scan the QR Code or visit **www.bristan.com** and search for your product.

## Contact Us

# BRISTAN

Part of **BRISTAN GROUP**

**Bristan Group Ltd.**  
**A Masco Company**

**UK:** Bristan Group,  
Pooley Hall Drive,  
Birch Coppice Business Park,  
Dordon, Tamworth  
B78 1SG.

**EU:** Masco Europe S.à.r.l.  
14 Rue Strachen  
6933 Mensdorf  
Luxembourg

**Email Us:** [enquire@bristan.com](mailto:enquire@bristan.com)  
**Website:** [www.bristan.com](http://www.bristan.com)  
**Call Us:** +44330 026 6273