

BRISTAN

TAPS & SHOWERS

Installation Instructions & User Guide

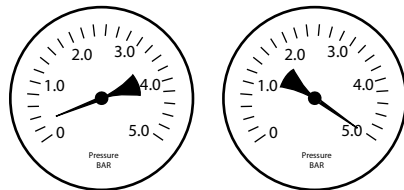
Please leave these instructions
with the end user

Product Code: MH SNK EF C (D4)

Specifications

Dynamic Water Pressure

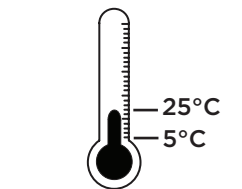
Min: 0.3 bar Max: 5.0 bar



Maximum Static Pressure: 10.0 bar

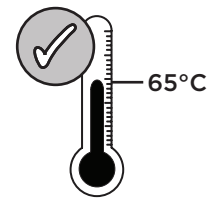
Inlet Water Temperature

Cold Water Supply



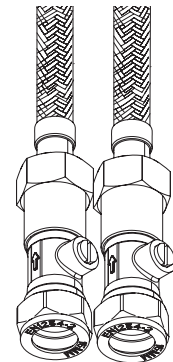
Min: 5°C Max: 25°C

Hot Water Supply



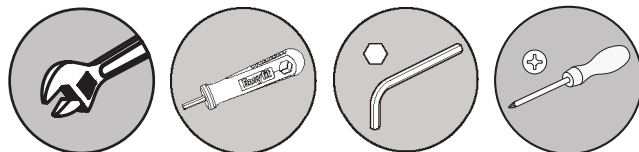
65°C
Recommended

Inlet Connections



1/2" BSP
Flexible Tails
with Isolation
Valves

Tools You'll Need



Adjustable Spanner EasyFit Tool Hexagonal Key Crosshead Screwdriver

Servicing Your Tap

We recommend servicing your tap at
least once every year to prolong its life.
To see a video showing how to remove
the cartridge for servicing, scan the QR
code with your smart phone or tablet.



Alternatively visit www.youtube.com/BristanTV

Prior to Installation

All products manufactured and supplied by Bristan are safe provided
they are installed, used correctly and receive regular maintenance in
accordance with these instructions.

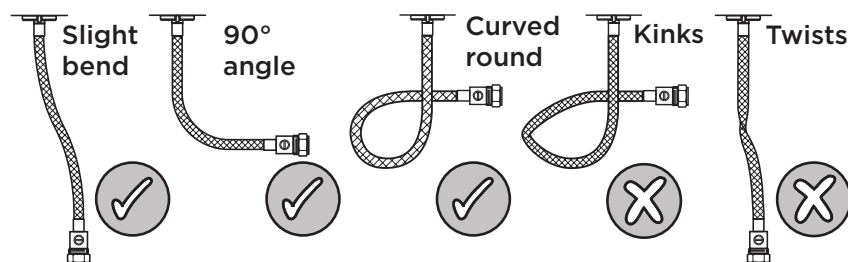
This product has been tested to the Water Regulations Advisory
Scheme (WRAS) and satisfies the requirements of the Water Supply
(Water Fittings) Regulations 1999 and current bylaws.
For full Installation Requirements & Notes (IRN) please visit
www.wras.co.uk/directory.

Isolation valves must be fitted to the inlet water supplies to ensure ease
of future maintenance.

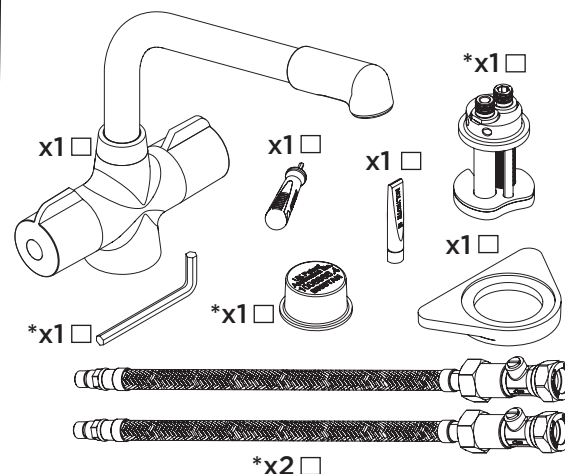
Before installing these taps the water supply must be thoroughly
flushed in order to remove any swarf, solder etc.

This product must not be modified in any way as this will invalidate the
guarantee.

Flexible Connecting Pipes



Pack Contents



*If you have purchased MH SNK EF C TO,
the EasyFit Base (EF KIT PK) will not be included.

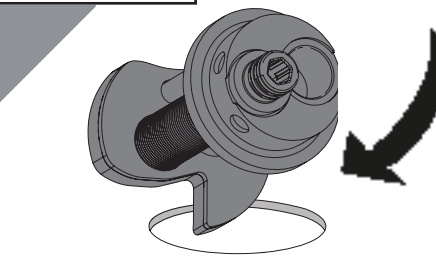
Spare Parts

To replace any spare parts
for your tap, why not
scan the QR Code or
visit www.bristan.com
and search for your product.



Installation

1

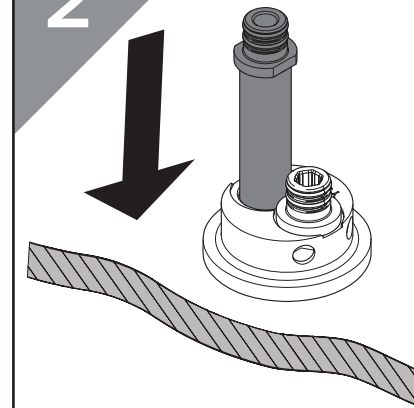


Feed the base
through the
sink hole from
the top.



If the surface the tap is being fitted to is over 8mm;
or you feel the tap needs extra stability, follow
the **alternative installation steps** overleaf.

2

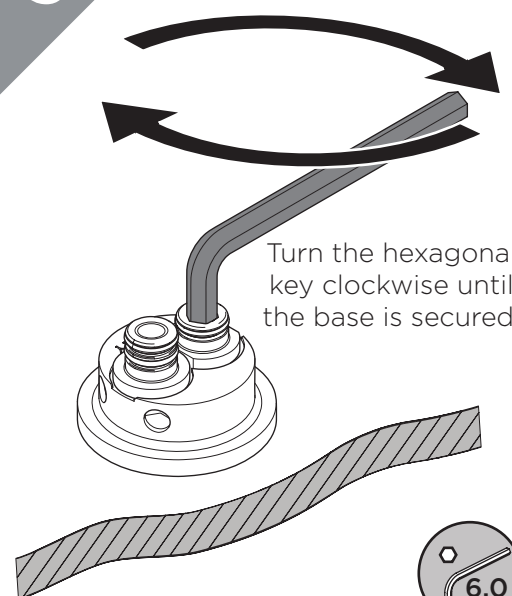


REMEMBER

Make sure the
base is centralised
when viewed from
the front of
the tap

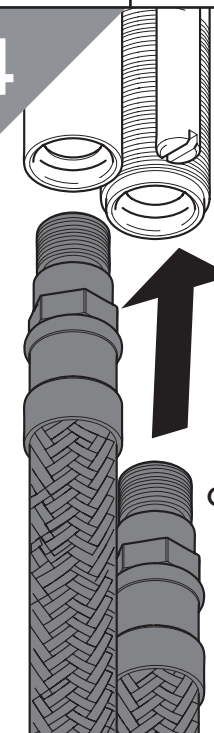
Drop the Plain Inlet
Connector into
the base.

3



Turn the hexagonal
key clockwise until
the base is secured.

4

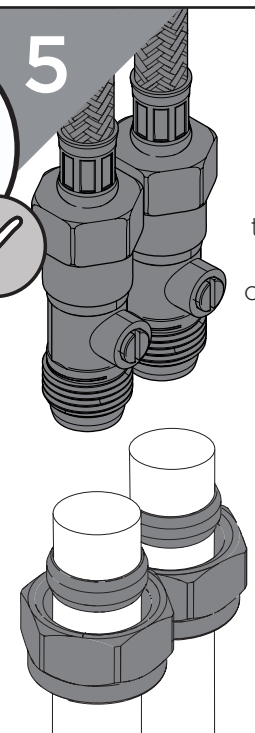


REMEMBER
hot on the
left, cold on
the right

Screw the
flexible tails
into the base.

DO NOT
OVER-TIGHTEN

5

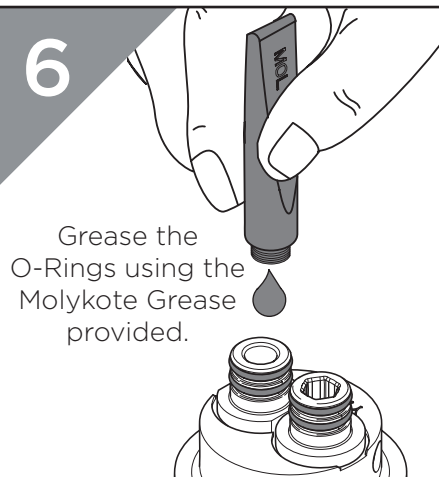


Connect the hot and
cold water
connections.

Olive

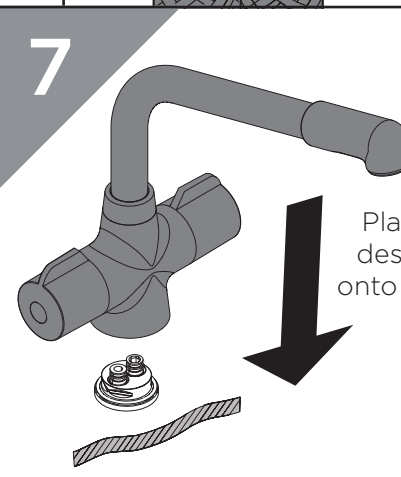
Compression
Nut

6



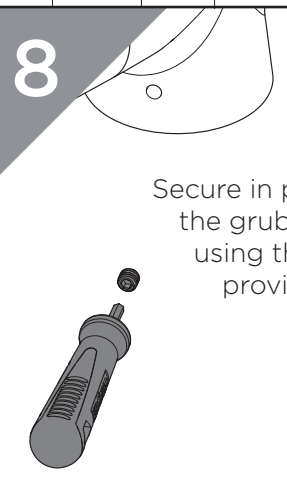
Grease the
O-Rings using the
Molykote Grease
provided.

7



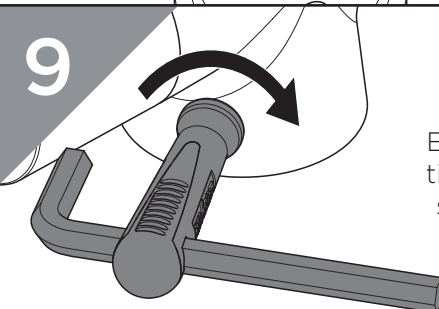
Place your
desired tap
onto the base.

8

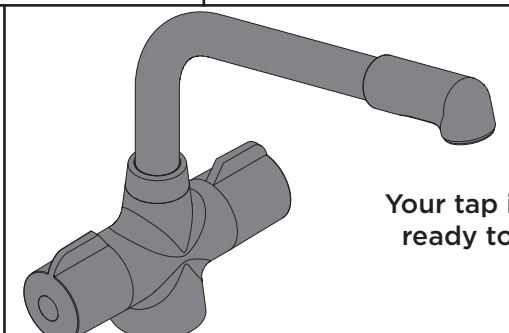
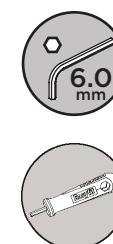


Secure in place with
the grub screws
using the tool
provided.

9



Thread the
hexagonal key
through the
EasyFit tool and
tighten the grub
screws with an
extra 1/2 turn.



Your tap is now
ready to use.

General Cleaning

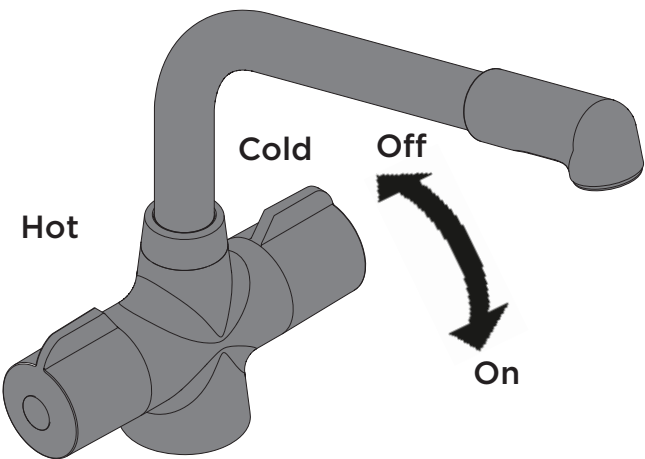
Bristan products are made from premium materials, with hand polishing and electroplated finishes.

Your taps or shower should be regularly cleaned with warm water, a mild pH-neutral liquid soap, and polished with a soft cloth. Any residues from soap, toiletries etc. should be rinsed off straight after use.

Household bleaches and cleaners contain harsh chemicals and may damage the surface finish. Avoid using abrasive cloths, scouring pads, scrub sponges, steel wool or anything similar.

Some surfaces such as nickel and pewter may be affected by the dye found in some cloths, so it is also important to avoid hanging cloths on spouts.

Operation



Maintenance - Cleaning/Replacing Valves

1 Remove handles.

2 Remove the valves using a suitable spanner.

3 To replace spare parts for your tap, why not scan the QR Code or visit www.bristan.com and search for your product.

4 Replace the valves.

5 Replace the handles.

6 Turn on the mains water supply, letting the water flow for a few minutes to flush through the system.

IMPORTANT
Isolate the water supply before starting!

Alternative Installation for Surfaces Out of Tolerance/Extra Stability

1 Turn the hexagonal key anti-clockwise to remove the back nut from the EasyFit Base.

2 Feed the base through the sink hole from the top.

3 Feed the Reinforcing Plate (if required) and Back nut up to the underside of the sink.

4 Turn the hexagonal key clockwise to secure the EasyFit Base.

5 Proceed to Step 4 of the Installation Steps.

REMEMBER
Make sure the base is centralised when viewed from the front of the tap

Love Your Chrome

Bristan offers an effective chrome-friendly cleaning kit for use with your taps and showers. Scan the QR Code or search for 'CLEAN KIT01' on www.bristan.com.

Maintenance - Cleaning/Replacing Outlet

1 Place a hexagonal key in the centre of the anti-splash, and turn the key to loosen and remove the anti-splash.

2 Clean and replace anti-splash as necessary. Secure in place.

3 Turn on the mains water supply, letting the water flow for a few minutes to flush through the system.

IMPORTANT
Isolate the water supply before starting!

Troubleshooting

| Symptom | Cause(s) | Remedy |
|--------------------------|---|--|
| No flow or low flow rate | Partially closed isolation valve. | Open isolation valve. |
| | Instantaneous water heater cycles on and off as flow rate or pressure is too low. | Increase water flow rate or pressure through system. |
| | Head of water is below the minimum distance required. | Refer to your the Specification for the minimum working pressure/distance required. |
| | Hot or cold water being drawn off elsewhere causing pressure changes or instantaneous boiler temperature changes. | Do not use other water outlets when using the taps. |
| | Airlock or partial blockage in the supply pipework or hoses. | Flush through pipework to ensure removal of debris and any airlocks. |
| | Water supply failure | Investigate water supply. Check your plumbing and heating systems for any faults. |
| Water dripping from taps | This is normal for a short time after using the taps. | This is caused by residual water tension, the build up of water in the tap body. |
| | If water continues to drip, possibly due to the ceramic disc valves/cartridge | Refer to the Maintenance section or visit www.youtube.com/BristanTV to watch the procedure. |
| Taps do not turn on | Closed isolation valve. | Open isolation valve. |
| | Mains water supply turned off. | Turn on mains water supply. |
| Wobbly Tap | Grub screws are not tight enough at the base | Ensure the grub screws are fully tightened against the base |
| | Extra security may be required depending on the surface the tap is fitted on to. | Refer to the Alternative Installation steps in order to fit the Reinforcing Plate. |

At Bristan, we want to make things as easy as possible for our customers. That's why we offer solid guarantees on all our products, effective from the date of purchase, to give you peace of mind.

To start your free guarantee simply scan the QR code and register your product. Alternatively visit www.bristan.com/register.

For any other queries, please call our Customer Service on 0330 026 6273 where our expert team of advisors will be able to offer you any help and advice.

For full guarantee terms and conditions visit www.bristan.com/guarantees.

We Know & We Care