
BRISTAN

Installation Instructions and User Guide

Temperature Controlled
Time Flow Tap

Models Covered:

Z TC 1/2 C

**Please keep this booklet for future
reference.**

**Installer, when you have read these
instructions please ensure you leave
them with the user.**

Contents



Thank you for choosing Bristan, the UK's leading taps and showers expert.

We have designed this product with your enjoyment in mind. To ensure that it works to its full potential, it needs to be fitted correctly. These fitting instructions have been created to give you all of the information you need and, if you need any further help, please do not hesitate to contact us.

Contents

• Important Safety Information	3
• Specifications	4
• Dimensions	5
• Pack Contents	6
• Prior to Installation	7
• Installation	8
• Operation	9
• Maintenance	10-11
• Troubleshooting	12-13
• Notes	14-15

Important Safety Information

- Please read these instructions thoroughly and retain for future use.
 - All products manufactured and supplied by Bristan are safe provided they are installed, used correctly and receive regular maintenance in accordance with these instructions.
 - **If you are in any doubt about your ability to install this product safely you must employ the services of an experienced qualified plumber/electrically qualified person.**
 -  **Warning:** Before starting any installation please consider the following: before drilling into walls, check that there are no hidden electrical wires, cables or water supply pipes. This can be checked with the aid of an electronic detector.
 - If power tools are used do not forget to:
 - Wear eye protection
 - Unplug equipment after use
 - **Important:** Remember to turn off the mains water supply before connecting to any existing pipe work. Fitting isolating valves to the inlet feeds is recommended for ease of maintenance.
 -  **Warning:** Before installing the new fitting it is essential that you thoroughly flush through pipe work in order to remove any remaining swarf, solder, etc. Failure to carry out this procedure could cause problems or damage to the workings of the fitting.
 - Take care when handling the 'flexible connecting pipes', do not bend, twist or crush them. Only tighten the pipes by hand.
 - Your fitting has a high quality finish and should be treated with care to preserve the visible surfaces. All surfaces will wear if not cleaned correctly, the only safe way to clean your fitting is to wipe with a soft damp cloth. Stains can be removed using washing up liquid. All bath cleaning powders and liquids will damage the surface of your fitting, even the non-scratch cleaners.
- Note:** Never use abrasive detergents or disinfectants or those containing alcohol, hydrochloric acid or phosphoric acid.
- This product **must** not be modified in any way as this will invalidate the guarantee.

Specifications

Inlet Connections: 15mm Compression flexible connecting pipes

Minimum working pressure: 1.0 bar

Maximum working pressure: 5.0 bar

Maximum static pressure: 10.0 bar

System Requirements:

Gravity fed hot & cold (Equal pressures)

Gravity fed hot & cold (Differential pressure, maximum ratio 5:1)

Unvented systems

Instantaneous water heater (Combination boiler)

Timed Flow: 15 Seconds \pm 5 seconds

This product needs to be installed in accordance with, and meet the requirements of The Water Supply (Water Fittings) Regulations (Northern Ireland) 2009 and The Water Supply (Water Fittings) (Scotland) Byelaws 2014.

For full Installation Requirements & Notes (IRN) please visit www.wrasapprovals.co.uk/approvals-directory

Designed to comply with and to be used within systems designed to BS 6700.

BS 6700 recommends the temperature of the stored water should never exceed 65°C. A stored water temperature of 60°C is considered sufficient to meet all normal requirements and will minimise the build up of lime scale in hard water areas.

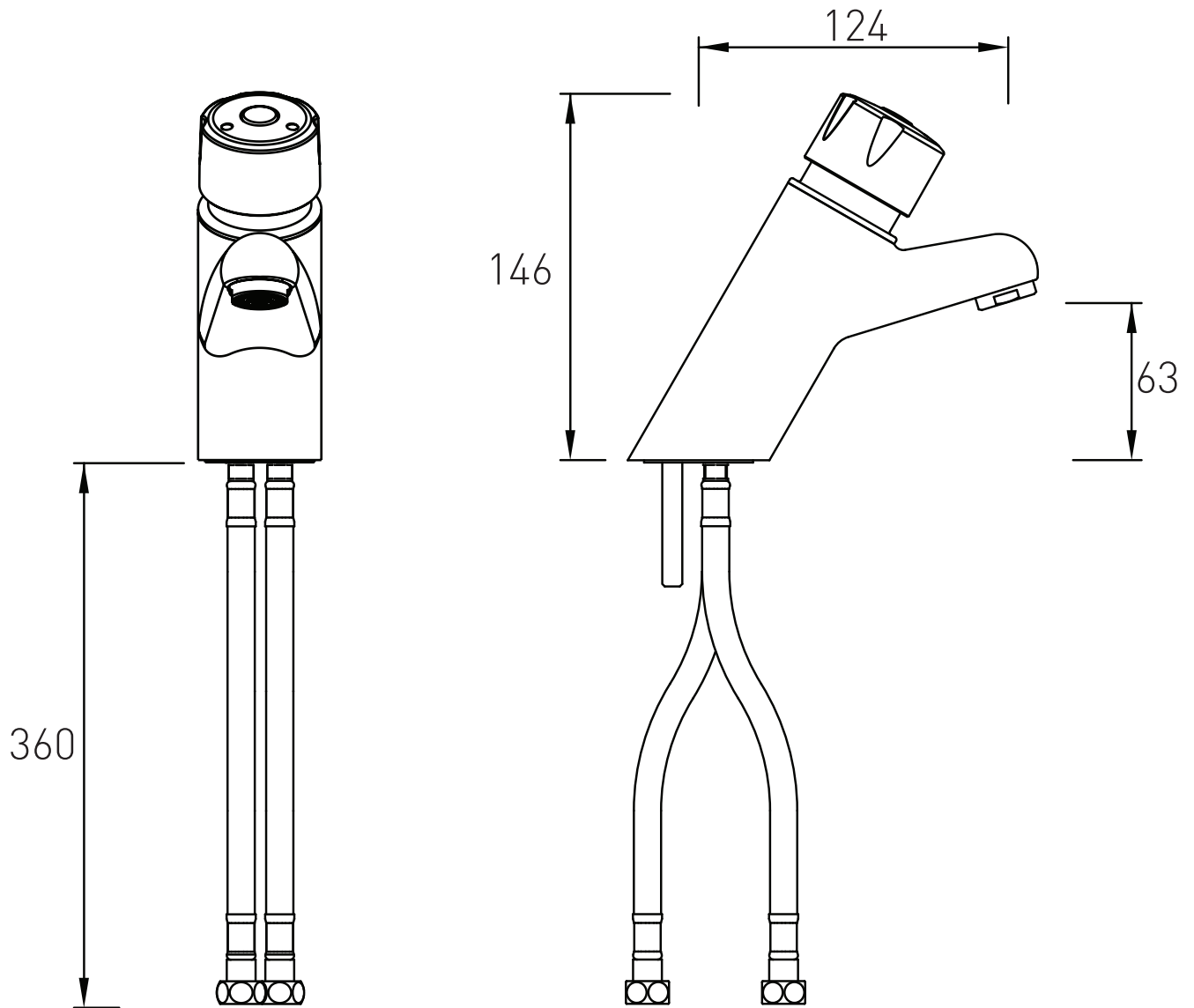
If the fitting is installed at low pressure (tank fed), then the minimum distance from the highest installed position of the outlet to the underside of the cold tank should be at least 10 metres to ensure adequate performance.

These taps and mixers should be installed in compliance with the Water Regulations. Where the supplies are unbalanced, i.e. Hot water from cylinder tank / cold from the mains, approved check valves must be fitted in the supply pipes.

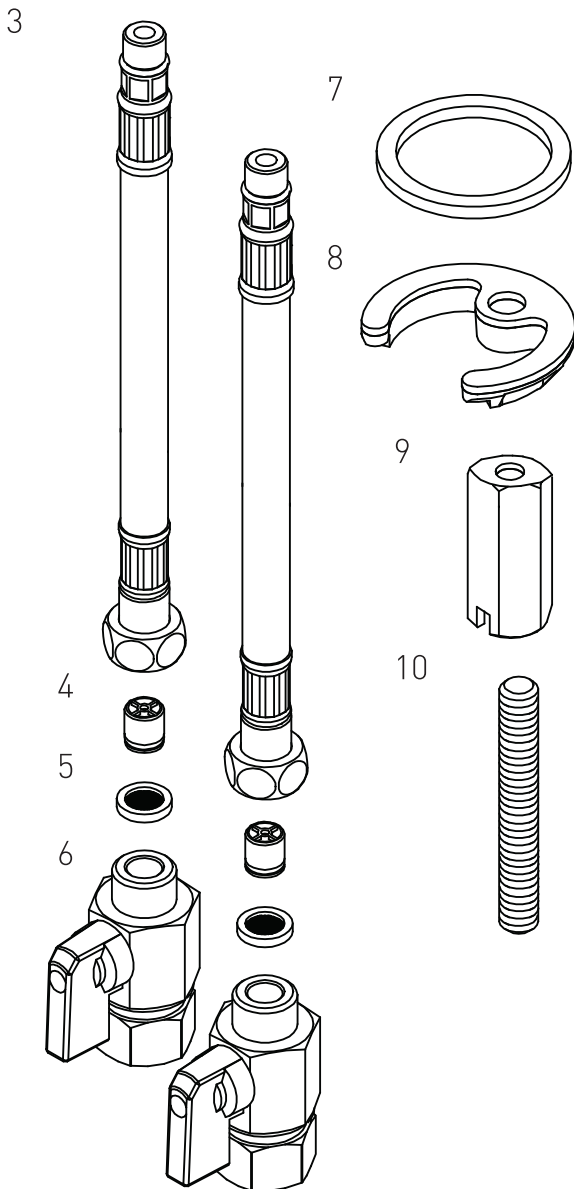
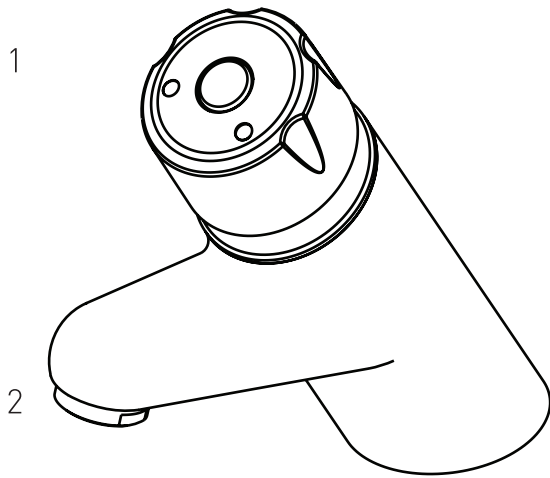
For further details contact your Local Water Authority.

Dimensions

Dimensions are in millimeters.



Pack Contents



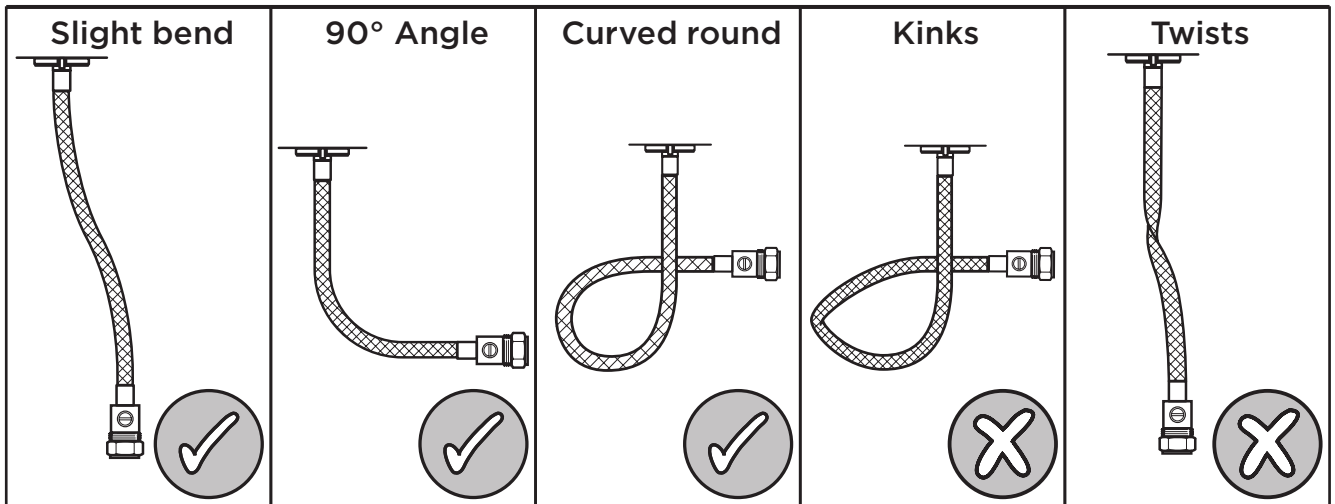
- | | |
|------------------------------------|----|
| 1. Tap Body | x1 |
| 2. 3 l/p/m Flow Regulator (Fitted) | x1 |
| 3. Flexible Connecting Pipes | x2 |
| 4. Non Return Valves (Pre-fitted) | x2 |
| 5. Filter Washers | x2 |
| 6. Isolation Valves | x2 |
| 7. Base Washer | x1 |
| 8. 'C' Shaped Plate | x1 |
| 9. Fixing Nut | x1 |
| 10. Fixing Rod | x1 |


Prior to Installation

Flexible Connecting Pipes

Care must be taken when connecting the flexible connection pipes to the household pipe work to ensure they do not bend sharply and kink or twist.

See below for recommended ways to fit the flexible connecting pipes.

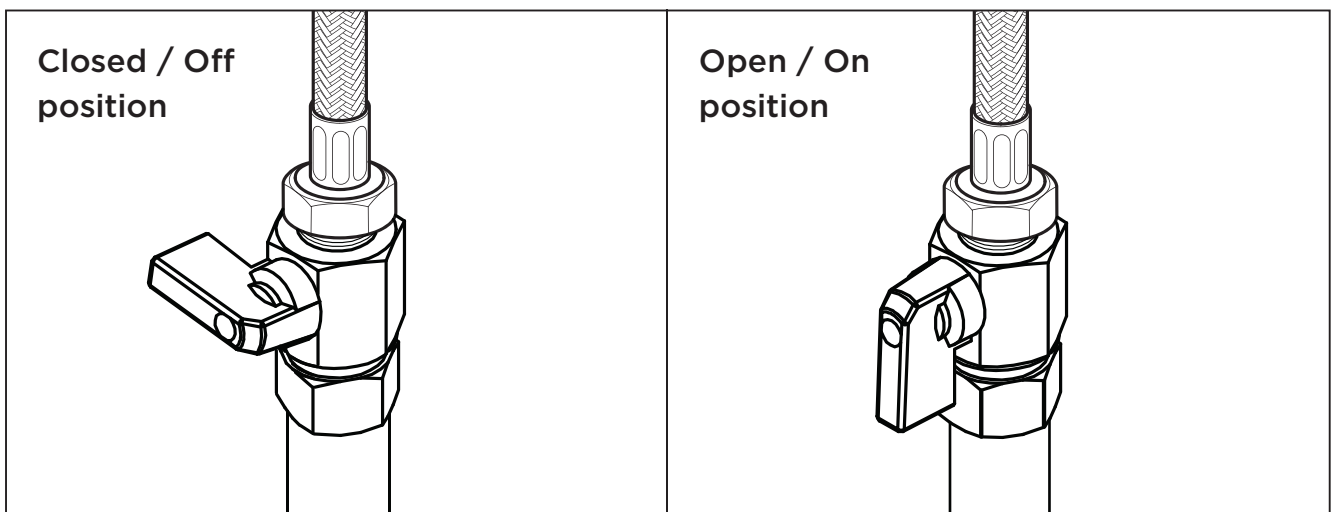


-  **Important:** Failure to follow these guidelines may result in poor performance and damage to the flexible connecting pipes.

The Integral Isolation Valves

The integral isolation valves must be accessible for turning on / off and for future servicing purposes.

See below for the on and off positions of the isolation valves.



Installation

Before installation

Flush through the pipe work to ensure removal of debris. Turn off both water supplies or close any isolating valves.

1. Fit the tap to sink

Thread the fixing rod into the bottom of the tap (if not already fitted). Fit the tap to the basin / sink / work surface ensuring the washer is fitted to the bottom of the tap to ensure a water tight seal between the tap and mounting surface.

Thread the 'C' shaped fixing plate on to the fixing rod up to the underside of the basin / sink / work surface.

Secure the tap in place by screwing the fixing nut onto the fixing rod.

Tighten the fixing nut fully using a suitable spanner.

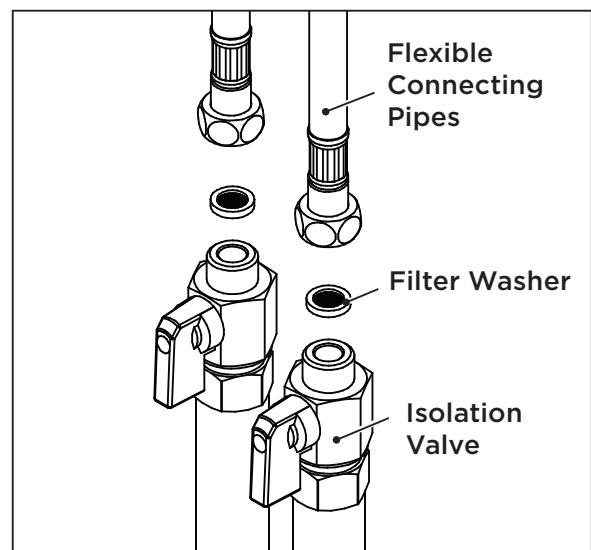
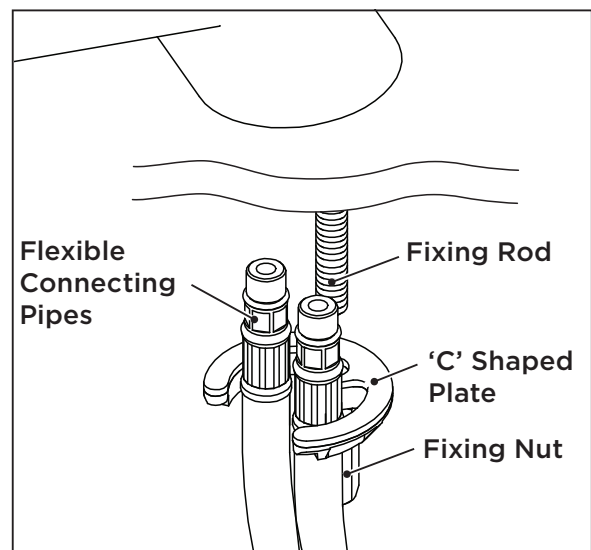
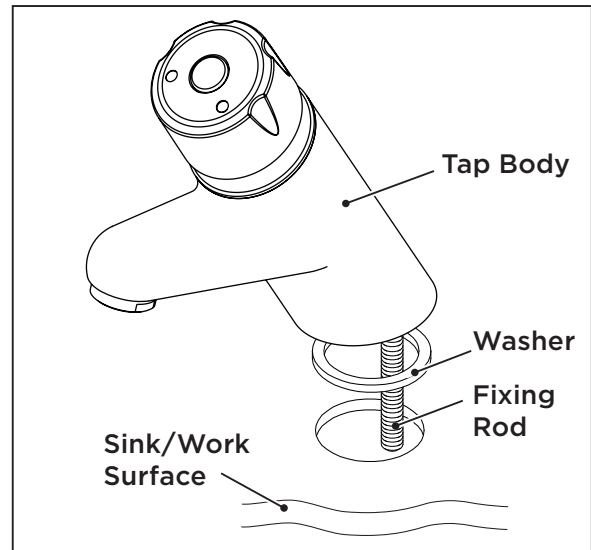
2. Connect water supplies

Screw the flexible connecting pipes into the bottom of the tap body, ensuring they are tightened fully (**hand tighten only, do not over tighten**).

Screw the isolating valves onto the flexible connecting pipes ensuring the filter washers are fitted in the flexible connecting pipe nuts.

Connect the isolating valves onto the water supply pipe work using the compression nuts and olives supplied and tighten securely using a suitable spanner.

Turn on both water supplies and operate the tap by pushing down and releasing the handle to ensure the tap is working correctly.

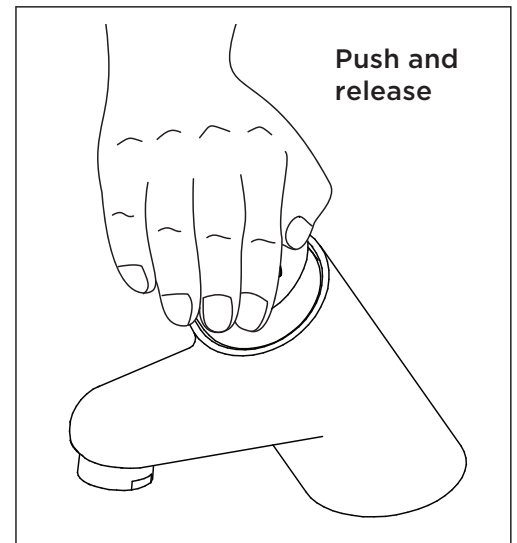


Operation

1. Flow Control

To operate the flow of water push down fully and release the control knob. The water will flow for approximately 15 seconds \pm 5 seconds.

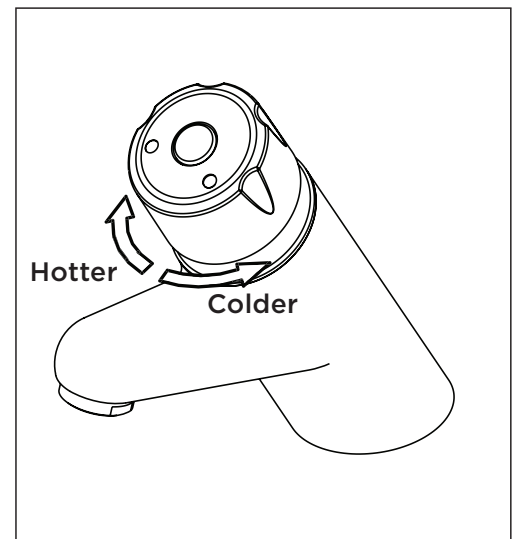
Important: If user pushes and holds down the control knob the water will not flow.



2. Temperature Control

Rotate the control knob anti-clockwise for a cooler temperature.

Rotate the control knob clockwise for a hotter water temperature.



3. Maximum temperature limiting

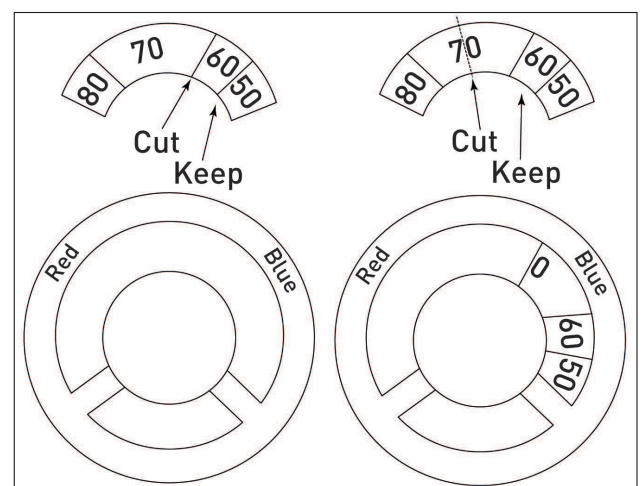
A temperature regulator device is supplied with each mixer. Once fitted inside the display ring, it reduces the rotation of the knob allowing to keep the maximum water temperature at 40° even if the hot water supply is as high as 80°.

Cut the elastomer regulator device with a blade as shown.

Place the regulator device in the groove on the display ring, blue side to be positioned as shown.

Hot water temperature 60°
(expected temperature)

Hot water temperature 75°
(expected temperature)



Display Ring

Maintenance

Before installation

Your fitting has a high quality finish and should be treated with care to preserve the visible surfaces. All surfaces will wear if not cleaned correctly, the only safe way to clean your mixer is to wipe with a soft damp cloth. Stains can be removed using washing up liquid. All bath cleaning powders and liquids will damage the surface of your fitting, even the non-scratch cleaners.

Note: Never use abrasive detergents or disinfectants or those containing alcohol, hydrochloric acid or phosphoric acid.

Cleaning the Non Return Valves (NRV)

Before carrying out this maintenance, turn off both isolating valves and operate the tap to release any built up water pressure within the tap.

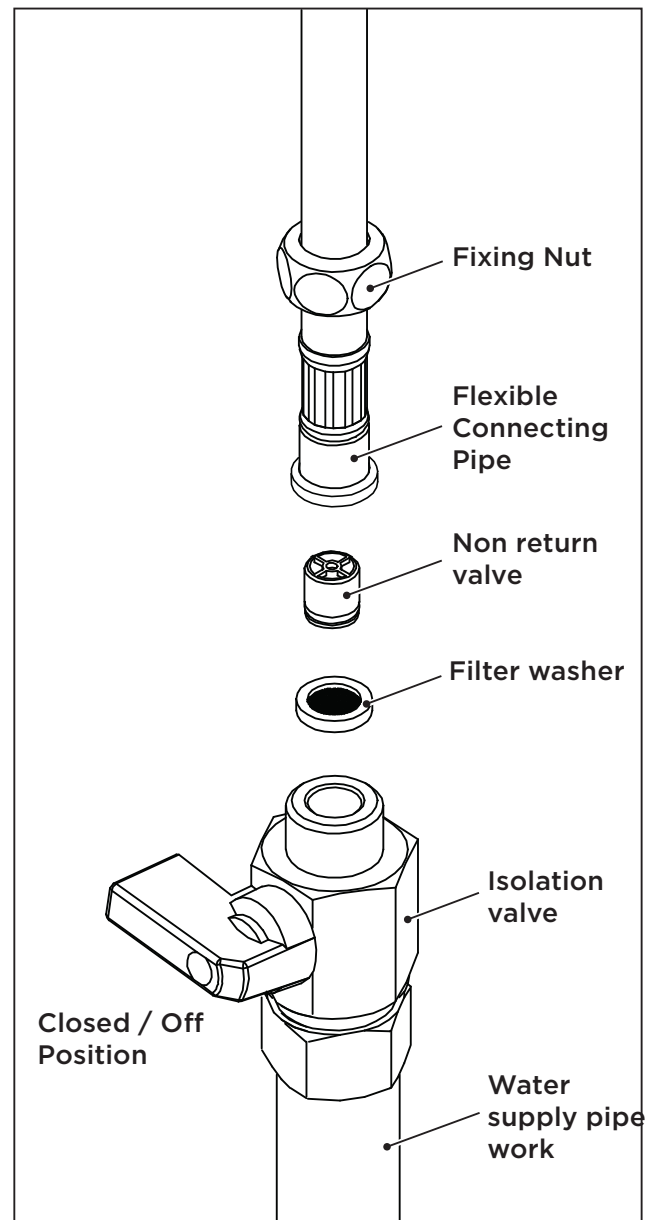
Unscrew the flexible connecting pipes from isolation valves. Remove the filter washers to reveal the non return valves inside the bottom of the flexible pipes.

Pull the non return valves open freely, replace with new NRV's from Bristan if faulty.

Replace the non return valves in the bottom of the flexible connecting pipes pushing them in fully.

Reconnect the flexible connecting pipes to the isolation valves ensuring the filter washers are refitted.

Turn on both isolation valves and operate the tap to ensure the non return valves open freely.



Maintenance

Cleaning the Cartridge

Before carrying out any maintenance, turn off both water supplies and close any isolating valves.

Prise out the handle cover cap, loosen the grub screw and remove the handle.

Remove the temperature limiter and spring.

Unscrew the locking nut using a suitable box spanner. Using suitable grips, pull the cartridge retaining shroud from the body. The cartridge assembly will come out attached to the cartridge retaining shroud.

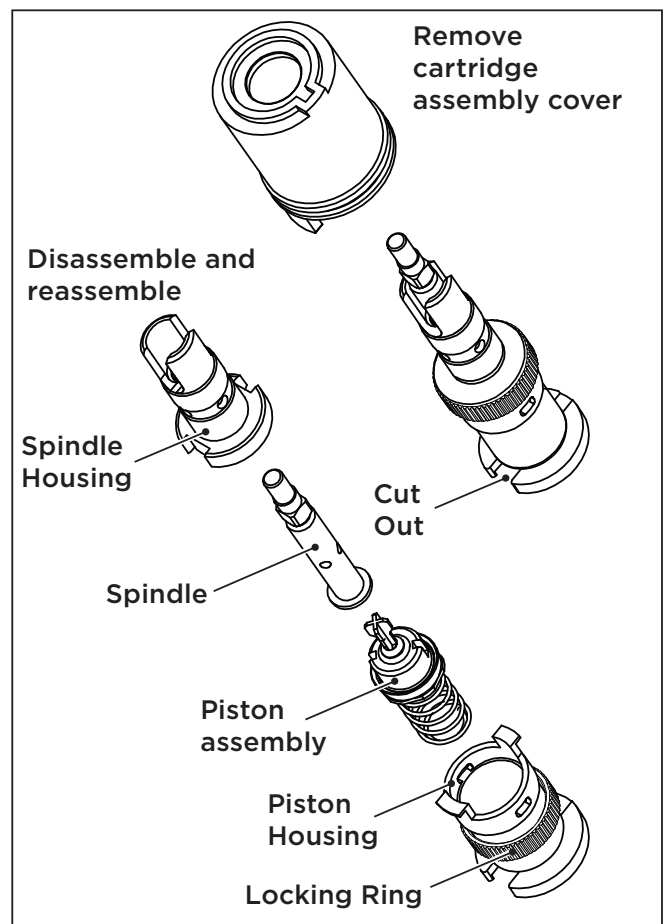
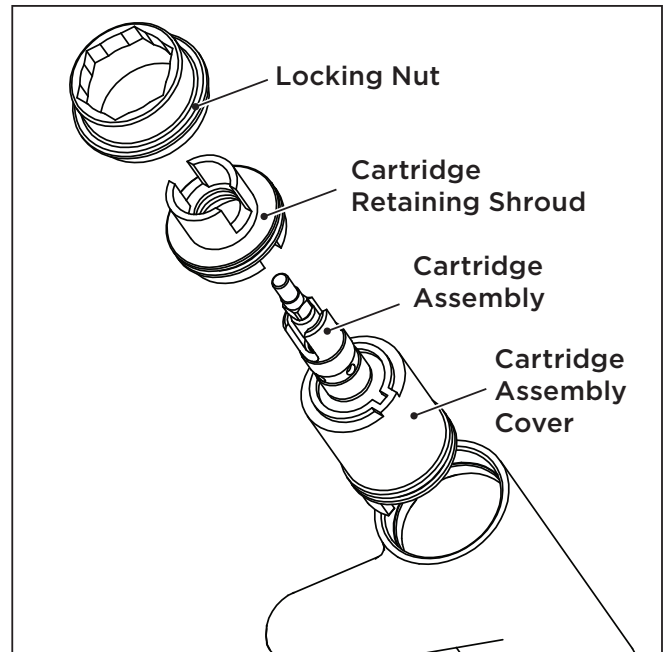
Pull the cartridge retaining shroud away from the cartridge assembly.

Remove the cartridge assembly and cover and unscrew the locking ring. Push the cartridge spindle out from the spindle housing and clean all parts under clean running water.

Reassemble the cartridge (ensuring the cut out in the bottom of the cartridge is pointing towards the front when refitted) and grease all 'O' rings with a suitable silicon grease.

Replace the cartridge assembly and push the cartridge retaining shroud into the tap body. Secure the cartridge assembly by screwing the locking nut onto the tap body using a suitable box spanner.

Replace the spring and temperature limiter and push the handle back onto the spindle. Tighten the grub screw and push-fit the cap into position.



Troubleshooting

Symptom	Cause	Remedy
Tap will not operate when control knob is fully pushed in.	Isolation valves closed.	Open isolation valves.
	User is holding in control knob.	Release control knob. The water will not flow if the control knob is held in by the user.
	Head of water is below the minimum requirement.	Refer to 'Specification' section on page 4.
	Airlock or blockage in water supply pipe work.	Flush through the water supply pipe work to ensure removal of any debris or airlocks
	Instantaneous water heater (if being used) cycles on and off as flow rate or water pressure is too low.	Increase water flow rate or water pressure through system to meet required minimum working pressure.
Tap will not shut off.	Cartridge assembly faulty or requires servicing / cleaning.	Remove cartridge assembly and clean / replace. Refer to 'Maintenance' section on pages 10-11 before dismantling the tap.
Tap does not run for long enough.	Isolation valves partially closed.	Open isolation valves fully.
	Insufficient water pressure.	Check water supply pressure. Refer to 'Specifications' section on page 4.

Troubleshooting

Symptom	Cause	Remedy
Tap does not run for long enough.	Isolation valves partially closed.	Open isolation valves fully.
	Insufficient water pressure.	Check water supply pressure. Refer to 'Specifications' section on page 4.
	Tap cartridge assembly faulty or requires servicing / cleaning.	Remove tap cartridge assembly and clean / replace. Refer to 'Maintenance' section on pages 10-11 before dismantling the shower valve.
	Flow regulator blocked.	Remove flow regulator housing from spout, remove flow regulator, clean and replace.
		Remove flow regulator and clean. Turn off the mains water supply or close any isolation valves before removing the riser / flow regulator.
	Insufficient water pressure.	Check water supply pressure. Refer to 'Specification' section on page 4.
	Isolation valves partially closed.	Open isolation valves.

Notes

Notes

Issue: D5

Part Number: Z TC 1/2 C

BRISTAN

Bristan Group Ltd.

UK: Bristan Group, B78 1SG.

EU: Masco Europe S.à.r.l.

14 Rue Strachen

6933 Mensdorf

Luxembourg

Customer Service: +44330 026 6273

Web: www.bristan.com

Email: enquire@bristan.com

A Masco Company

At Bristan, we want to make things as easy as possible for our customers. That's why we offer solid guarantees on all our products, effective from the date of purchase, to give you peace of mind.

To start your free guarantee simply scan the QR code and register your product.
Alternatively visit www.bristan.com/register.

For any other queries, please call our Customer Service on **0330 026 6273** where our expert team of advisors will be able to offer you any help and advice.

For full guarantee terms and conditions visit www.bristan.com/service-centre/guarantees.

