

BRISTAN

Installation Instructions & User Guide

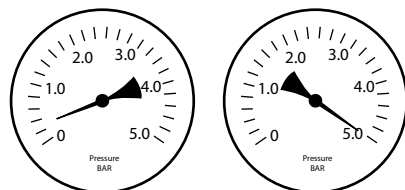
Please leave these instructions
with the end user

Product Code: SAI SHCVO C (D8)

Specifications

Dynamic Water Pressure

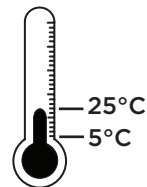
Min: 0.2 bar Max: 5.0 bar



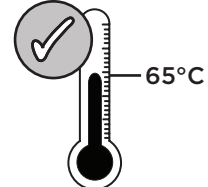
Maximum Static Pressure: 10.0 bar

Inlet Water Temperature

Cold Water Supply Hot Water Supply



Min: 5°C Max: 25°C



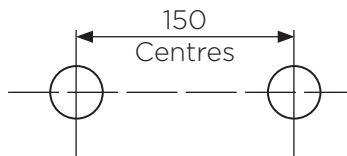
65°C Recommended



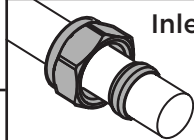
IMPORTANT

The inlet hot water must
be at least 10°C above the
required blend temperature.

Inlet Dimensions



Inlet Connections



15mm
Compression

Tools You'll Need



Socket Spanner



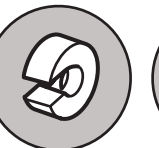
Flat head
Screwdriver



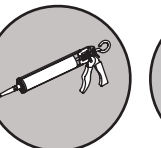
Drill



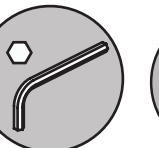
Adjustable Spanner



Pipe Cutter



Silicon Sealant



Hexagonal Keys



Pipe & Wire Detector

Prior to Installation

All products manufactured and supplied by Bristan are safe to use provided that they are installed, operated and receive regular maintenance in accordance with these instructions.

This product needs to be installed in accordance with, and meet the requirements of the Water Supply (Water Fittings) Regulations 1999 and current by-laws. For full Installation Requirements & Notes (IRN) please visit wras.co.uk/directory.

Isolation valves must be fitted to the inlet water supplies to ensure ease of future maintenance. Before installing this product the water supply must be thoroughly flushed in order to remove any swarf, solder etc. Full access must be made available for future maintenance/servicing purposes.

Before drilling into walls, check that there are no hidden electrical wires, cables or water supply pipes. This can be checked with the aid of an electronic detector.

If power tools are used do not forget to:

- Wear eye protection
- Unplug equipment after use

This product must not be modified in any way as this will invalidate the guarantee.

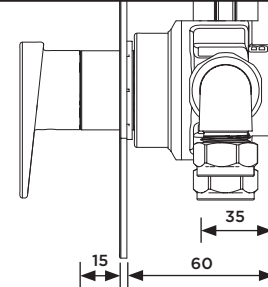
If in doubt, contact a registered plumber, your Local Water Authority or the Secretary of the Institute of Plumbing, address as follows:-

The Institute of Plumbing,
64 Station Lane,
Hornchurch,
Essex,
RM12 6NB, Tel: 01708 472791

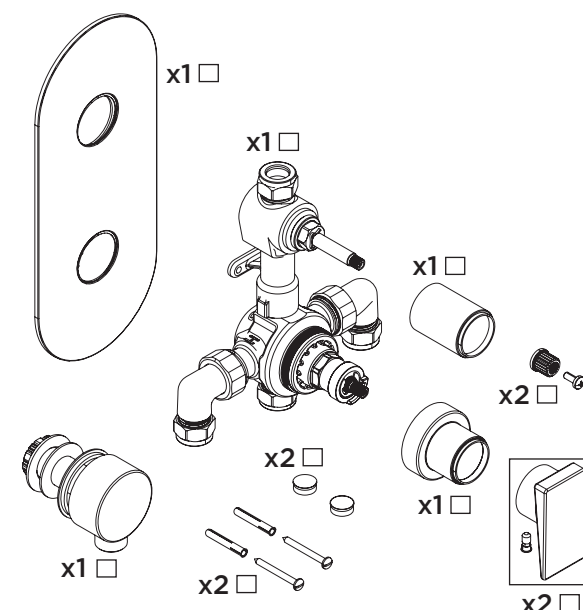
Cavity Dimensions (mm)

Minimum
Cavity Depth: 35mm

Concealing Plate
Adjustment Range: 15mm

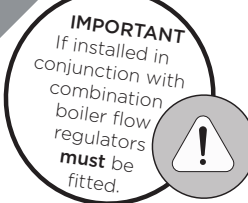


Pack Contents



Valve Configuration

1



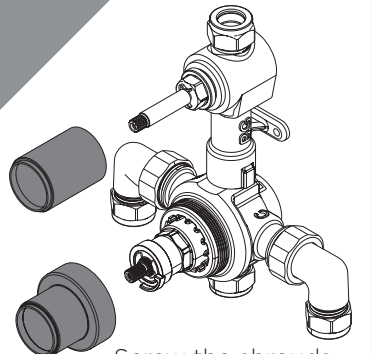
IMPORTANT
If installed in
conjunction with
combination
boiler flow
regulators
must be
fitted.

Yellow Flow
Limiter (Hot)

Green Flow
Limiter (Cold)

Remove the inlet elbows and filters.
Remove the plastic inserts from the valve
inlets and insert the flow regulators.
Replace the elbows, ensuring the
filters are fitted.

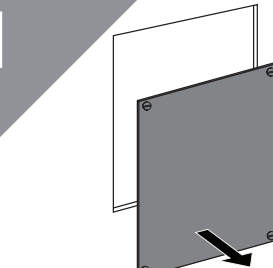
2



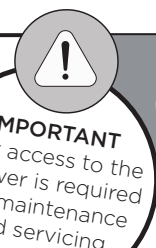
Screw the shrouds
onto the valve.

Installation

1



Prepare the pipework.
Create the rear access point in the
back of the wall cavity.



IMPORTANT
Rear access to the
shower is required
for maintenance
and servicing

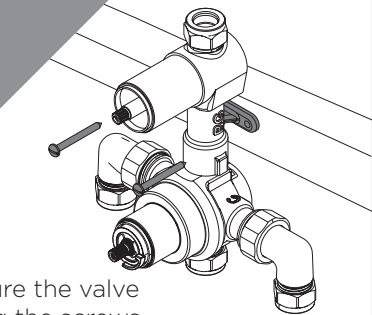
Install suitable
batons (if required)
onto the rear cavity.
Mark the position
of the valve and
drill and plug
holes to suit.

Max 60mm

Min 35mm
Baton

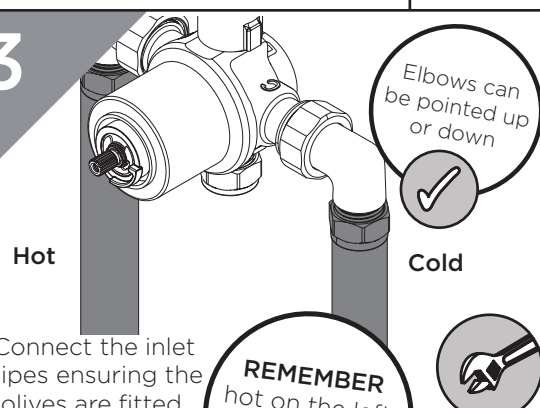


3



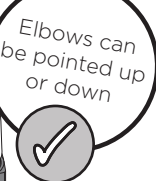
Secure the valve
using the screws
supplied
(solid walls only)
or a suitable
alternative.

3



Hot

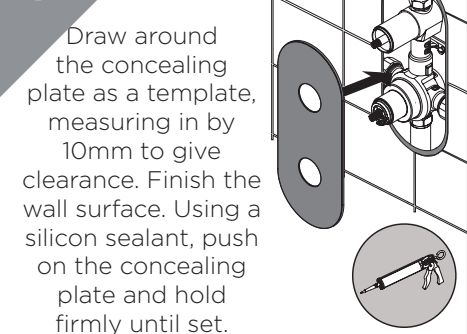
Connect the inlet
pipes ensuring the
olives are fitted.



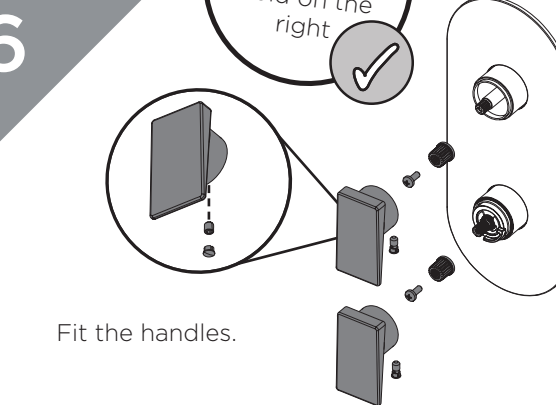
4

Plumb the
valve into
your chosen
outlet. **Turn
on the water
supply and
check the
valve for any
leaks.**

5



6



Fit the handles.

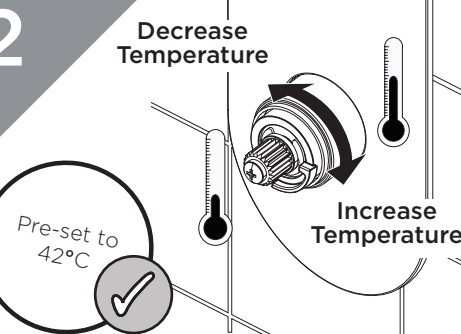
Temperature Adjustment

1



Turn the
handle to
the maximum
temperature
setting, then
remove it.

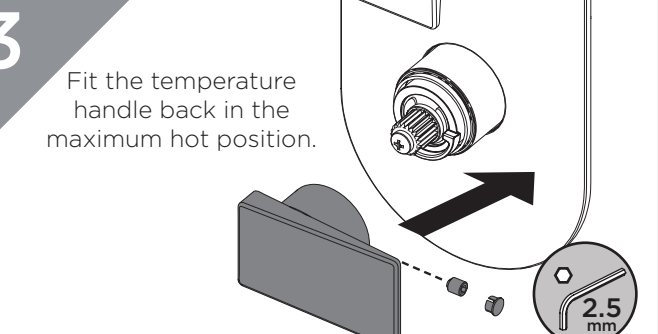
2



Decrease
Temperature

Increase
Temperature


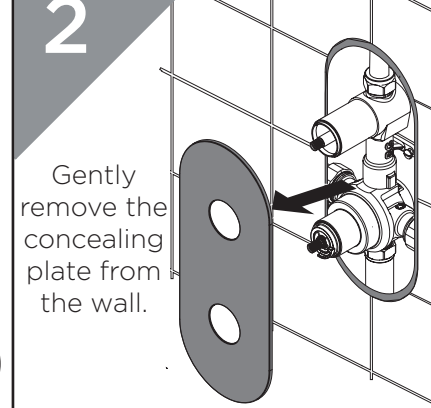
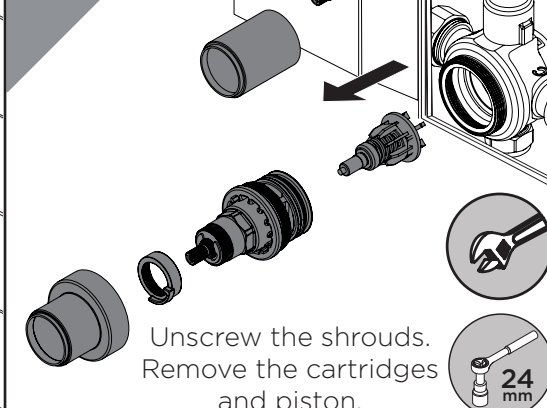

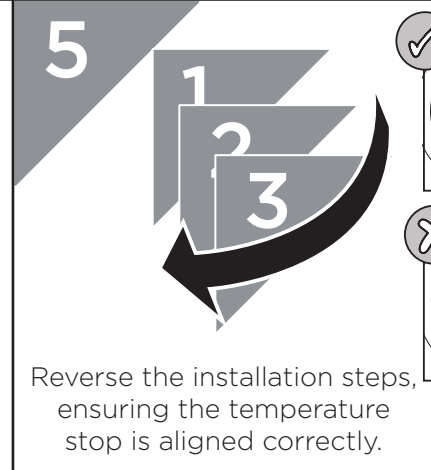
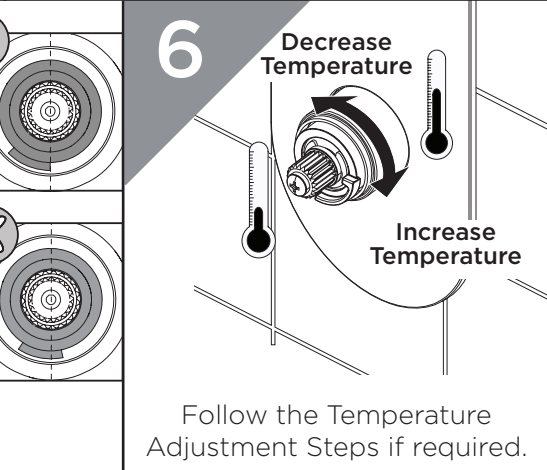
3



Fit the temperature
handle back in the
maximum hot position.

General Cleaning	Operation
<p>Bristan products are made from premium materials, with hand polishing and electroplated finishes.</p> <p>Your taps or shower should be regularly cleaned with warm water, a mild pH-neutral liquid soap, and polished with a soft cloth. Any residues from soap, toiletries etc. should be rinsed off straight after use.</p> <p>Household bleaches and cleaners contain harsh chemicals and may damage the surface finish. Avoid using abrasive cloths, scouring pads, scrub sponges, steel wool or anything similar.</p> <p>Some surfaces such as nickel and pewter may be affected by the dye found in some cloths, so it is also important to avoid hanging cloths on spouts.</p>	<div> <div>On/ Increased Flow</div> <div>Off/ Decreased Flow</div> <div>Increased Temperature</div> <div>Decreased Temperature</div> </div>

Wall Outlet Installation	With rear access
<p>Choose the location for the wall outlet and create a 25-30mm hole in the wall. Ensure your shower accessories have enough reach from that position. Finish the wall surface.</p>	<p>Fit the wall outlet, ensuring the washers are fitted either side of the wall.</p>
Servicing Intervals	Without rear access
<p>To reduce the build up of lime scale and to ensure this shower works to its maximum performance we recommend this shower is serviced every 6-12 months depending on the hardness of your water.</p>	<p>Go to Step 6 in the Installation Steps.</p> <p>Follow Step 6 in the Installation Steps, fitting a 1/2" female connection at the hole in the wall (not supplied).</p> <p>Screw the wall outlet into the 1/2" female connection, using a suitable thread sealant ensuring the rubber seal is fitted to the back of the wall outlet.</p>

Maintenance - Cartridge Cleaning		
<div>1</div> <div>Remove the handles.</div> <div></div>	<div>2</div> <div>Gently remove the concealing plate from the wall.</div> <div></div>	<div>3</div> <div>Unscrew the shrouds. Remove the cartridges and piston.</div> <div></div>
<div>4</div> <div></div> <div>Remove any O-rings and soak all components in de-scaler and wash off in clean water. Examine all seals and replace if needed. Use WRAS approved silicon based grease on all seals.</div>	<div>5</div> <div></div> <div>Reverse the installation steps, ensuring the temperature stop is aligned correctly.</div>	<div>6</div> <div></div> <div>Follow the Temperature Adjustment Steps if required.</div>

Troubleshooting		
Symptom	Cause	Remedy
No flow or low flow rate	Partially closed isolation valve.	Open isolation valve.
	Instantaneous water heater cycles on and off as flow rate or pressure is too low.	Increase water flow rate or pressure through system.
	Head of water is below the minimum distance required.	Refer to the specification for the minimum distance required.
	Are the water supply pressures balanced?	If pressures are unbalanced, a pressure reducing valve should be used for optimum performance.
	Hot or cold water being drawn off elsewhere causing pressure changes or instantaneous boiler temperature changes.	Do not use other water outlets when using the shower.
	Airlock or partial blockage in the supply pipework.	Flush through pipework and filters to ensure removal of debris and any airlocks.
	Hot/Cold water supply has failed	Check the hot and cold feeds. The shower will not work if either fails.
Maximum Water Temperature too Hot/Cold	Maximum Water Temperature needs adjusting.	Refer to the Temperature Setting section to set your desired maximum temperature.
Outlet Water Temperature too Hot/Cold	Filter/pipe blockage	Flush through pipework and filters to ensure removal of debris and any airlocks.
	Installation conditions outside operating parameters.	Refer to the specification for the minimum distance required.
	Hot water temperature is less than 10°C above the required blend temperature	Adjust hot water temperature or wait for water to reheat if a stored water system is used.
	Instantaneous water not igniting because the water flow rate is too low.	Increase water flow rate through the system. Refer to the Maintenance section to clean/check the cartridge and filters for any damage. Contact your boiler manufacturer.
	Instantaneous water not igniting because the water pressure is too low.	Refer to the specification for system requirements. Increase water pressure through the system. Contact your boiler manufacturer.
Only hot/cold water from Shower Valve	Inlet water supplies are reversed.	Check the water inlet connections are the correct way around: Hot on the left, Cold on the right when viewed from the front. Rework pipework as necessary.
	Filter/pipe blockage	Flush through pipework and filters to ensure removal of debris and any airlocks.
Water dripping from shower	This is normal for a short time after using the shower.	This is caused by residual water tension, the build up of water in the shower.
	If water continues to drip, possibly due to the cartridge	Remove cartridge and clean, refer to 'Maintenance' section before starting any maintenance.
Shower does not turn on	Closed isolation valve.	Open isolation valve.
	Mains water supply turned off.	Turn on mains water supply.

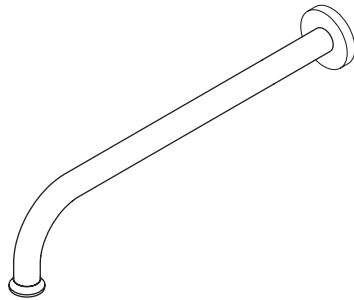
Our Guarantee	
<p>At Bristan, we want to make things as easy as possible for our customers. That's why we offer solid guarantees on all our products, effective from the date of purchase, to give you peace of mind.</p> <p>To start your free guarantee simply scan the QR code and register your product. Alternatively visit www.bristan.com/register.</p> <p>For any other queries, please call our Customer Service on 0330 026 6273 where our expert team of advisors will be able to offer you any help and advice.</p> <p>For full guarantee terms and conditions visit www.bristan.com/service-centre/guarantees.</p>	
<p>Bristan Group Ltd.</p> <p>UK: Bristan Group, B78 1SG.</p> <p>EU: Masco Europe S.à.r.l., 14 Rue Strachen 6933 Mensdorf, Luxembourg.</p>	<p>Customer Service: +44330 026 6273</p> <p>Web: www.bristan.com</p> <p>Email: enquire@bristan.com</p> <p>A Masco Company</p>

BRISTAN

TAPS & SHOWERS

Installation Instructions and User Guide

Fixed Shower Arm



Models covered: ARM CTRD01 C,
ARM CTRD01 G, ARM CTRD02 C,
ARM CTRD02 G, ARM WARD01 C &
ARM WASQ01 C

Please keep this booklet for future
reference.

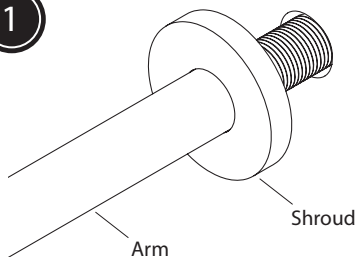
Installer, when you have read these
instructions please ensure you leave

Important Safety Information

- Please read these instructions thoroughly and retain for future use.
- All products manufactured and supplied by Heritage are safe provided they are installed, used correctly and receive regular maintenance in accordance with these instructions.
- If you are in any doubt about your ability to install this product safely you must employ the services of an experienced qualified tradesman.
- Remove all packaging and check there are no missing or damaged parts.
- Before starting any installation please consider the following:
 - Before drilling into walls, check that there are no hidden electrical wires, cables or water supply pipes. This can be checked with the aid of an electronic detector.
- If power tools are used do not forget to:
 - Wear eye protection
 - Unplug equipment after use
- This product must not be modified in any way as this will invalidate the guarantee.

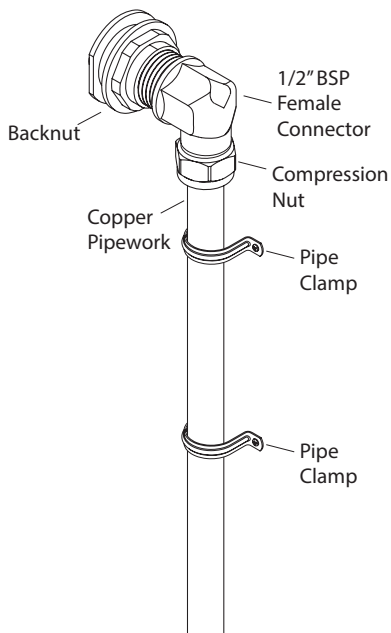
Installation

1



Thread the arm through the stud wall and into a 1/2" BSP female connection.

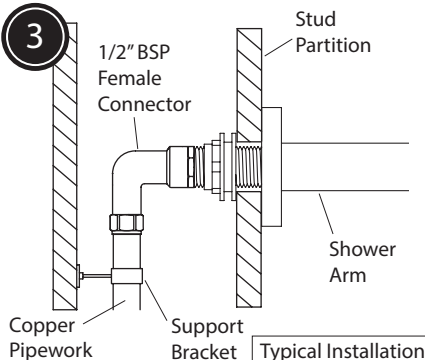
2



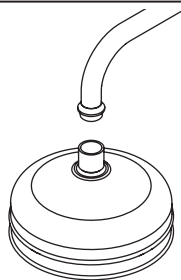
Secure the arm in position by tightening the clamp and backnut. The supply pipework to the shower valve must be rigid and secured in position with the use of pipe clamps.

See step 3 for a typical installation.

3



4



Screw the shower rose (not supplied) onto the shower arm. Ensure the sealing washer is used.

Notes

Please use this space to add any notes you or your installer may have regarding the plumbing system / installation of this product.

Guarantee

At Bristan, we want to make things as easy as possible for our customers. That's why we offer solid guarantees on all our products, effective from the date of purchase, to give you peace of mind.

To start your free guarantee simply scan the QR code and register your product. Alternatively visit www.bristan.com/register.



For any other queries please call our Customer Service on 0330 026 6273 where our expert team of advisors will be able to offer you any help and

Part Number: FI ARM CTRD02
Issue: D4

BRISTAN

TAPS & SHOWERS

TELEPHONE HELPLINE: 0330 026 6273

Bristan Group Limited

UK: Bristan Group

B78 1SG

EU: Masco Group S.à.r.l

14 Rue Strachen

6933 Mensdorf

Luxembourg

BRISTAN

Installation Instructions & User Guide

Please leave these instructions
with the end user

FH SLRD01 Range (D5)

Specifications

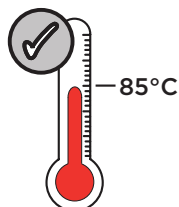
Dynamic Water Pressure

Min: 0.2 bar Max: 5.0 bar



Maximum Static Pressure: 10.0 bar

Inlet Water Temperature



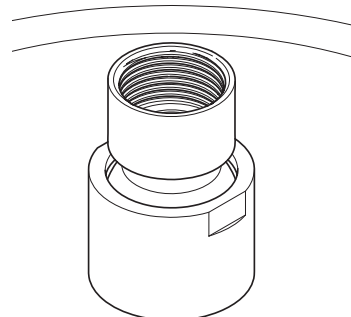
Maximum Hot 85°C

IMPORTANT




The inlet hot water must be at
least 10°C above the require
blend temperature.


Inlet Connections

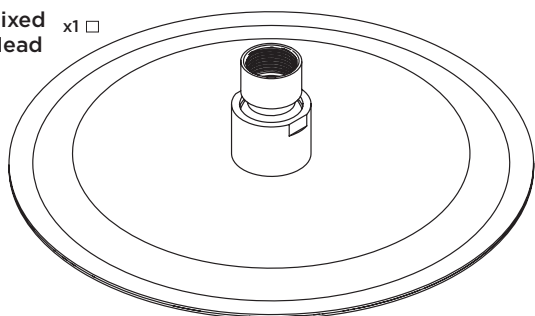


1/2" BSP (female)

Pack Contents

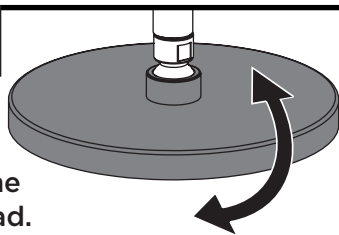
Filter
Washer x1 

Fixed
Head x1 



Operation

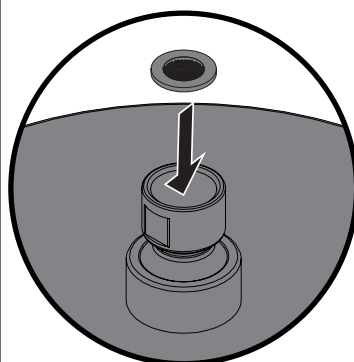
Tilt to adjust the
angle of the head.



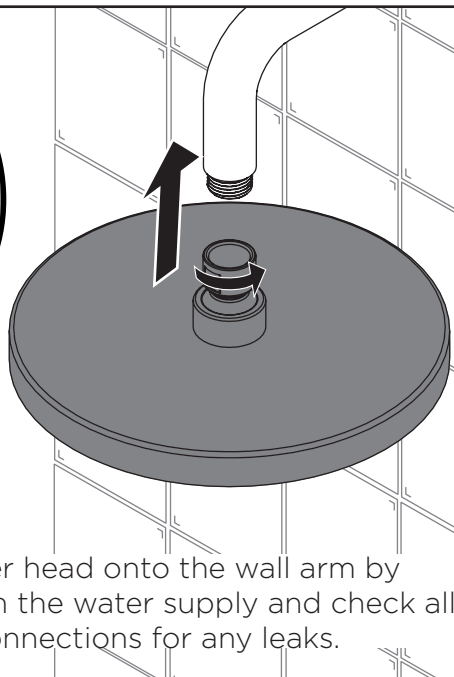
Installation



Products shown in these instructions are for illustration
purposes only. Your shower can still be installed and operated by
following these instructions.



Ensure the filter
washer is correctly
inserted into the
fixed head.



Screw the shower head onto the wall arm by
HAND ONLY. Turn on the water supply and check all
joints and connections for any leaks.

Prior to Installation

All products manufactured and supplied by Bristan are safe to use provided that they are installed, operated and receive regular maintenance in accordance with these instructions.

This product needs to be installed in accordance with, and meet the requirements of The Water Supply (Water Fittings) Regulations (Northern Ireland) 2009 and The Water Supply (Water Fittings) (Scotland) Byelaws 2014. For full Installation Requirements & Notes (IRN) please visit www.wrasapprovals.co.uk/approvals-directory

Isolation valves must be fitted to the inlet water supplies to ensure ease of future maintenance. Before installing this product the water supply must be thoroughly flushed in order to remove any swarf, solder etc. Full access must be made available for future maintenance/servicing purposes.

If power tools are used do not forget to: - Wear eye protection - Unplug equipment after use

This product must not be modified in any way as this will invalidate the guarantee.

Spare Parts



To replace any spare
parts for your tap, why
not scan the QR Code or
visit www.bristan.com
and search for
your product.

Cleaning

General Cleaning

Bristan products are made from premium materials, with hand polished, PVD, EPD or electroplated finishes. Your product should be regularly cleaned with warm water, a mild pH-neutral liquid soap, and polished with a soft cloth. Any residues from soap, toothpaste, shampoos and shower gels can cause blemishes if not rinsed off straight after use.

Household bleaches and cleaners contain harsh chemicals and may damage the surface finish. Avoid using abrasive cloths, scouring pads, scrub sponges, steel wool or anything similar.

Cleaning The Shower Head

Your Bristan shower head is equipped with rub-clean nozzles for easy cleaning. Simply rub your fingers across the rubber spray jets regularly and before you turn the shower on to remove and scale or debris.

The hardness of the water in your area will determine how often you should clean your shower head. Build up of scale in particularly hard water areas combined with constant use means you may need to clean your shower head weekly. To ensure continued performance, the shower head needs to be regularly de-scaled.

Contact Us

Bristan Group Ltd.
A Masco Company

BRISTAN

Part of **BRISTAN GROUP**

UK: Bristan Group,
Pooley Hall Drive,
Birch Coppice Business Park,
Dordon, Tamworth
B78 1SG.

EU: Masco Europe S.à.r.l.
14 Rue Strachen
6933 Mensdorf
Luxembourg

Email Us: enquire@bristan.com
Website: www.bristan.com
Call Us: +44330 026 6273

Our Guarantee

At Bristan, we want to make things as easy as possible for our customers. That's why we offer solid guarantees on all our products, effective from the date of purchase, to give you peace of mind.

To start your free guarantee simply scan the QR code and register your product. Alternatively visit www.bristan.com/register.

For any other queries, please call our Customer Service on 0330 026 6273 where our expert team of advisors will be able to offer you any help and advice.

For full guarantee terms and conditions visit www.bristan.com/service-centre/guarantees.

