

BRISTAN

Regency Luxury Bath Shower Mixer

Installation Instructions & User Guide



IMPORTANT: Please keep these instructions for future reference and request of replacement parts

1. Introduction

Thank you for choosing Bristan, the UK's leading taps and showers expert. We have designed this product with your enjoyment in mind. To ensure that it works to its full potential, it needs to be fitted correctly.

These fitting instructions have been created to give you all of the information you need and, if you need any further help, please do not hesitate to contact us on 0330 026 6273.

2. Safety Note

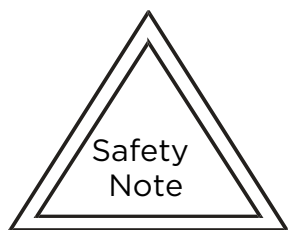
Please read these instructions thoroughly and retain for future use.

All products manufactured and supplied by Bristan are safe provided they are installed correctly, used correctly and receive regular maintenance in accordance with these instructions.

These fittings need to be installed in accordance with and meet the requirements of the Water Supply (Water Fittings) Regulations 1999 and Scottish Bylaws 2004.

Before starting any installation please consider the following:

- Prior to drilling into walls, check that there are no hidden electrical wires, cables or water supply. This can be checked with the aid of an electronic detector.



If power tools are used, do not forget to:

- Wear eye protection
- Unplug equipment after use

3. Specification

Operating Pressure Range (bar)

Bath Shower Mixer	Min. 0.2	Max. 5.0
-------------------	-------------	-------------

Maximum Static Pressure - 10 bar

NOTE: Nominally equal (balanced) inlet supply pressures are recommended for optimum performance

Designed to comply with BS EN 200 for single taps/combination taps for water systems of type 1 and 2 general technical specifications and to be used within systems designed to BS 6700.

BS6700 recommends the temperature of stored water should never exceed 65°C. A stored temperature of 60°C is considered sufficient to meet all normal requirements and will minimise the build up of lime scale in hard water areas

4. Installation

This mixer is suitable for use at all supply pressures. However, for optimum performance, use both hot and cold water supplies, which should be ideally balanced.

Operating Pressures: Min. 0.2 Bar - Max. 5.0 Bar

If the fitting is installed at low pressure (tank fed), then the minimum distance from the underside of the nozzle to the cold water tank should be at least 2 metres to ensure adequate shower performance.

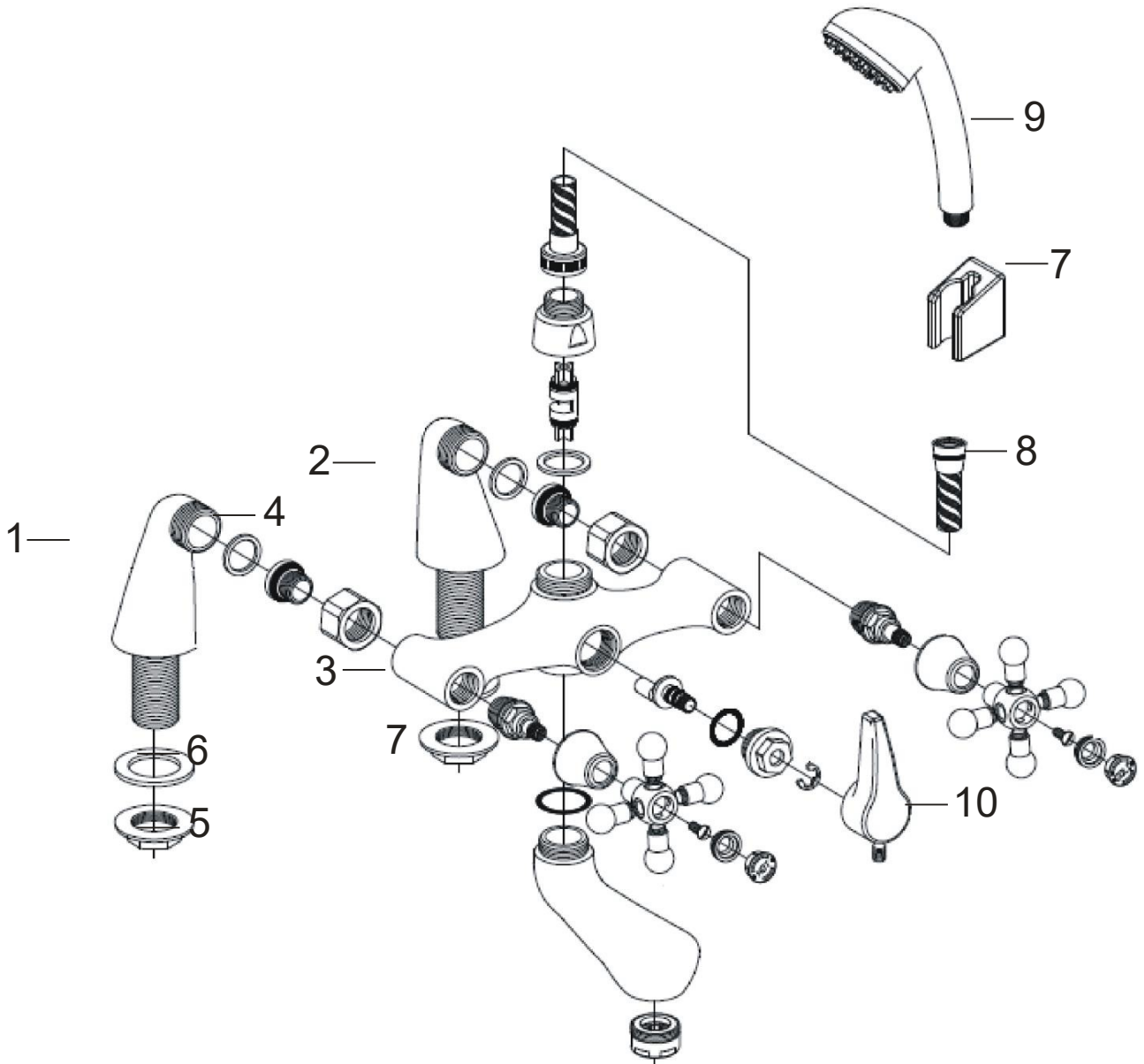
This mixer should be installed in compliance with Water Regulations.

Where the supplies are balanced, i.e. hot water from the cylinder tank and cold from the mains, approved check valves must be fitted in the supply pipes.

For further details, please contact your Local Water Authority.

4. Installation Continued

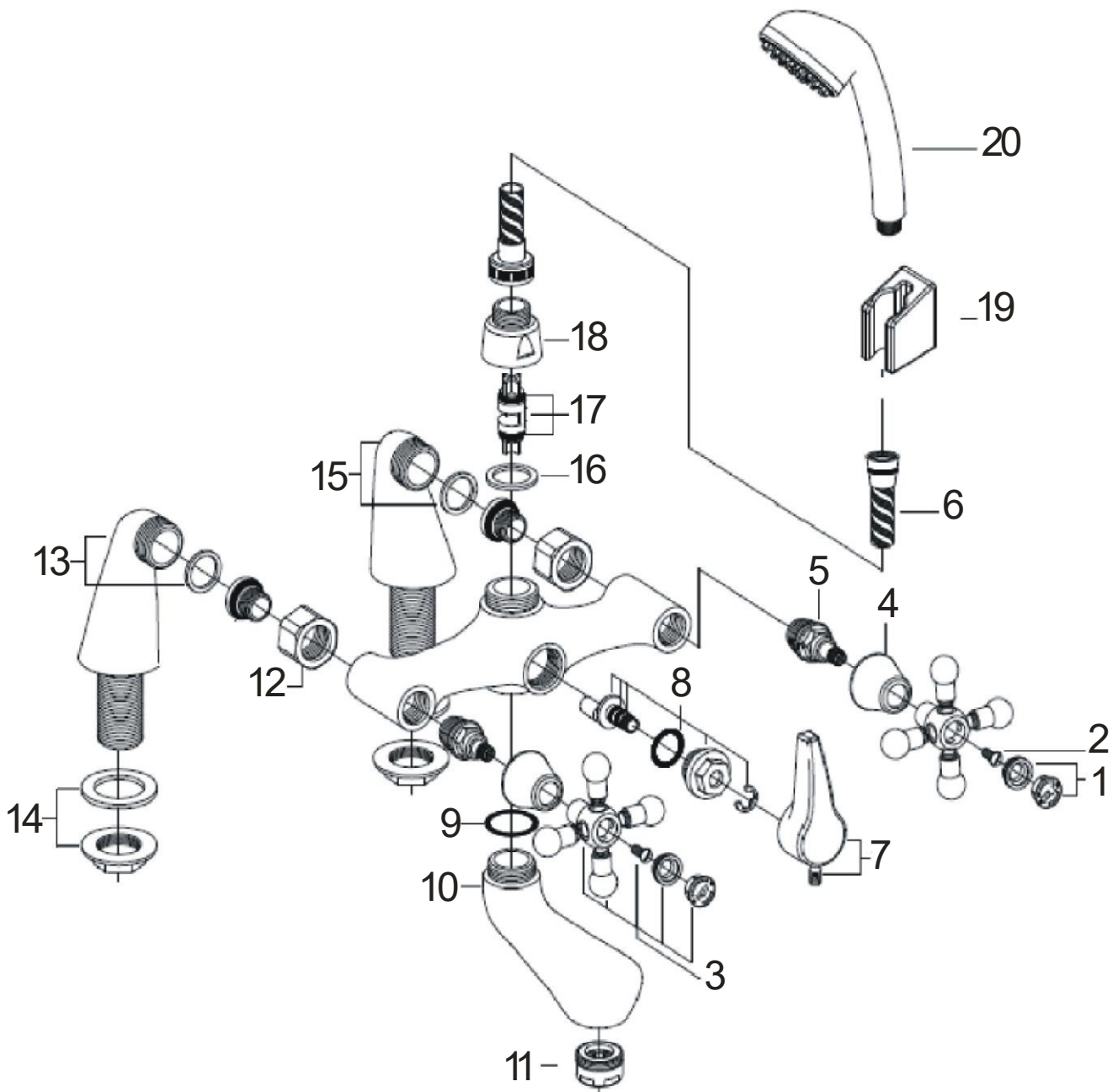
1. Identify all components are present prior to installation
2. Fit the legs (1 and 2) to the body (3) using the large sealing washers (4)
3. Fit the mixer to the bath using the back nuts (5) and washers (6). Connect the hot and cold water supplies.
4. Fit the wall bracket (7) to the wall using the fixing kit provided
5. Fit the hose (8) to the wall bracket and the handset
6. Fully open both valves, letting the water run for a few minutes to flush the system and check for any leaks.
7. Operate the mixer in both bath fill and shower mode. To switch from bath filler to shower mode, simply move the diverter lever (10) from one direction to the other



4. Installation Continued

Contents List

1. Indices	x2	11. Anti-Splash	x1
2. Screw	x2	12. Nut	x2
3. Handle	x2	13. Pillar leg (left) and washer	x1
4. Shroud	x2	14. Back nut	x2
5. Valve	x2	15. Pillar leg (right) and washer	x1
6. Hose and washer	x1	16. Filter Washer	x1
7. Diverter Lever	x1	17. Shuttle	x1
8. Diverter Mechanism	x1	18. Outlet reducer	x1
9. O Ring	x1	19. Wall Bracket	x1
10. Spout	x1	20. Handset	x1



5. Cleaning & Maintenance

Your fitting has a high quality finish and should be treated with care to preserve the visible surfaces. All finishes will wear if not cleaned correctly. The safe way to clean your product is to wipe with a soft damp cloth. Stains can be removed using washing up liquid. All bathroom cleaning products (powders and liquids) will damage the surface of your fitting, even the non-scratch cleaners.

NOTE: Never use abrasive detergents or disinfectants or those containing alcohol, hydrochloric or phosphoric acid.

We advise that your fitting is regularly serviced, particularly in hard water areas.

Maintenance

Traditional valve type - if the fitting leaks from the spindle

1. Remove the fitting head
2. Tighten the gland nut on top of the valve

Sureflow type valves - if the fitting self opens

1. Remove the fitting head
2. Tighten the gland nut on top of the valve

All valve types - if the fitting begins to drip

1. Turn off both water supplies
2. Remove fitting head and valve
3. Carefully clean seating and rubber washer
4. Replace the valve and head. Turn on both water supplies
5. Contact our helpline if the problem persists

BRISTAN

This booklet covers product codes

R BSM C R BSM G

R DBSM C R DBSM G

R LBSM C R LBSM G

R TBSM C R TBSM G

At Bristan, we want to make things as easy as possible for our customers. That's why we offer solid guarantees on all our products, effective from the date of purchase, to give you peace of mind.

To start your free guarantee, simply scan the QR code and register your product. Alternatively, visit www.bristan.com/register to register your product via a computer.

For full guarantee terms and conditions visit, www.bristan.com/guarantees



We Know & We Care

Helpline

0330 026 6273

Bristan Group Limited

Birch Coppice Business Park, Dordon, Tamworth, Staffordshire B78 1SG

A Masco Company

Website: www.bristan.com

Telephone: 0330 026 6273

Email: enquire@bristan.com