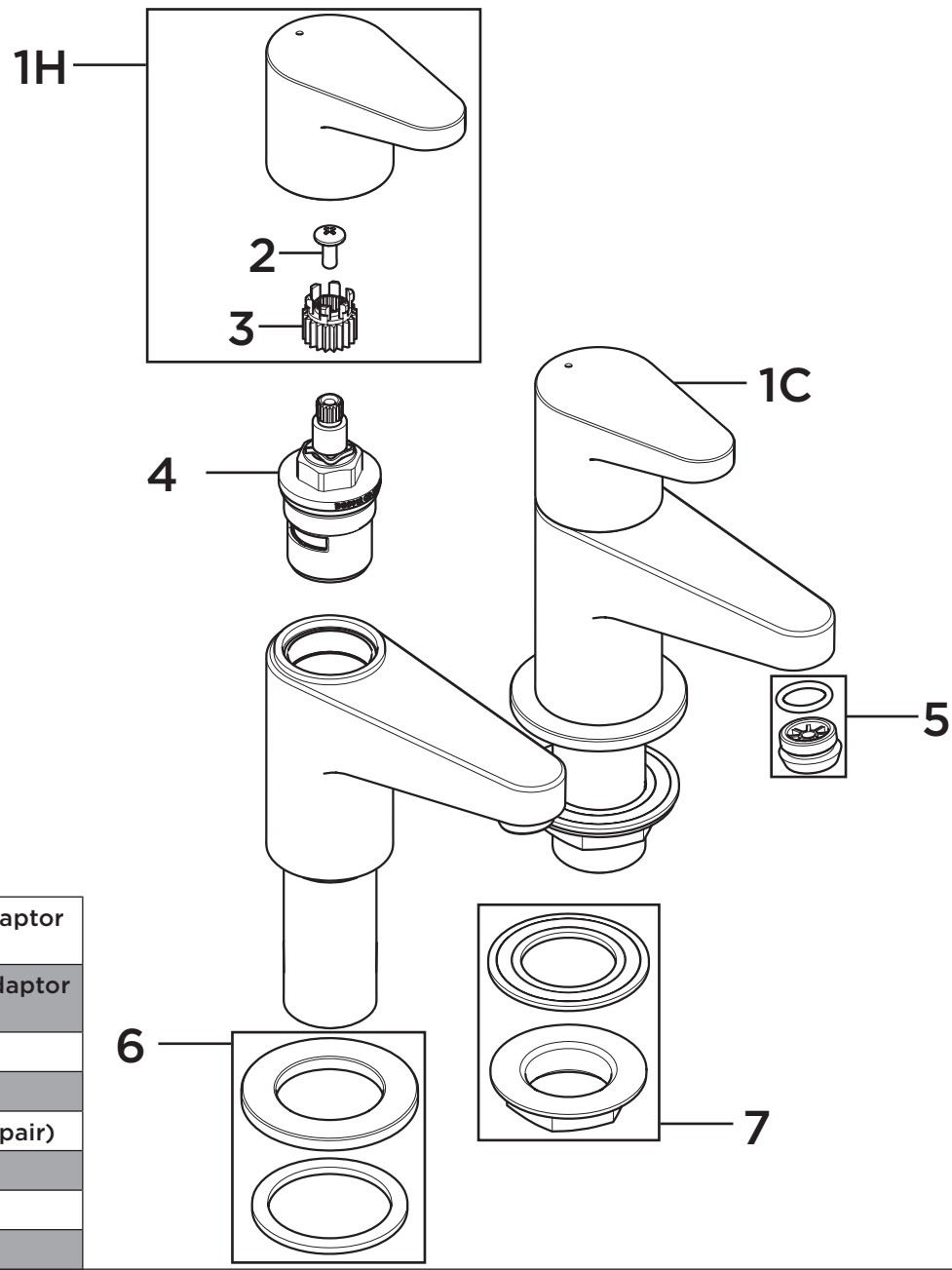


**Product Code:** QST 3-4 C

**Revision:** D2



1H	Hot Handle Assembly inc. Spline Adaptor and Screw
1C	Cold Handle Assembly inc. Spline Adaptor and Screw
2	Spline Adaptor
3	M4x10 Screw
4	1/4 Turn 3/4" Ceramic Disc Valves (pair)
5	M16 Flow Straightener
6	Plinth with Rubber Seal
7	Backnut and Washer