

AFTERCARE INSTRUCTIONS

Your fitting has a high quality finish and should be treated with care to preserve the visible surfaces.

All surface finishes will wear if not cleaned correctly, the only safe way to clean your mixer is to wipe with a soft damp cloth. Stains can be removed using washing up liquid. All bath cleaning powders and liquids will damage the surface of your fitting, even the non-scratch cleaners. **NOTE: Never use abrasive detergents or disinfectants or those containing alcohol, hydrochloric acid or phosphoric acid.**

Bristan recommend E-Cloth for cleaning all of our bathroom & kitchen products. Using just water, E-cloth gives a smear free, deep clean by breaking up and holding dirt, which normal cloths leave behind. Order through your Bristan stockist. (ORDER CODE: ECLOTH)



GUARANTEE

All products are manufactured to the highest standards and a 5 year guarantee covers any defect in manufacture.

NOTE: The 5-year guarantee on the cartridge is invalidated if damaged by any waterborne debris.

All products must have access for servicing or replacement during the life of the product.

In the interests of continuous product development we reserve the right to alter specification as necessary

PRODUCT CODE:

PRODUCT IDENTIFICATION CODE LASER ETCHED ON PRODUCT
Installer please fill in code here _____.(Where applicable)

TELEPHONE HELPLINE! +44 (0)844 701 6273

Bristan Group Limited
Birch Coppice Business Park
Dordon
Tamworth
Staffordshire
B78 1SG
UK

A Masco Company
Website: www.bristan.com
Telephone: +44 (0) 844 701 6274
Facsimile: +44 (0) 844 701 6275
Email: enquire@bristan.com

BRISTAN

Prism Stop Cock

Fitting Instructions & Contents List

Please keep these instructions for future reference and request of replacement part

This stopcock is intended to be used in conjunction with other products, such as the blending valves, diverters and spray outlets from the Bristan range in order to create a system to suit your requirements.

WATER PRESSURE

This stopcock is suitable for use at all supply pressures between 0.1 and 8.0 bar. Depending on requirements, installation of this stopcock should be in compliance with Water Regulations. For further details contact your Local Water Authority.

COMPONENTS

- | | |
|-------------------------|------|
| 1. Cap | (x1) |
| 2. Grub Screw | (x1) |
| 3. Handle | (x1) |
| 4. Valve Shroud | (x1) |
| 5. Concealing Plate | (x1) |
| 6. Valve | (x1) |
| 7. Fitting Body | (x1) |
| 8. Compression Adapters | (x2) |

INSTALLATION

Stopcocks should be arranged in your system to provide the necessary shut off points to suit the application.

1. Identify all components and check for completeness, particularly before arranging Fitting.
2. Unscrew lever (1), loosen grub screw (2) and remove handle (3).
3. Slide off the wall cover (5) and unscrew valve shroud (4).
4. Set fitting (7) into wall and connect to suitable 15mm pipe work (not supplied) using the compression adapters (8).

NOTE: - Before finishing wall turn on water supplies to check both correct system function and for leaking from joints/connections.

5. Complete wall finish. Note! It is important that sufficient space is left around the fitting body to allow the valve shroud to fit on.
6. Screw on valve shroud and slide on wall cover.

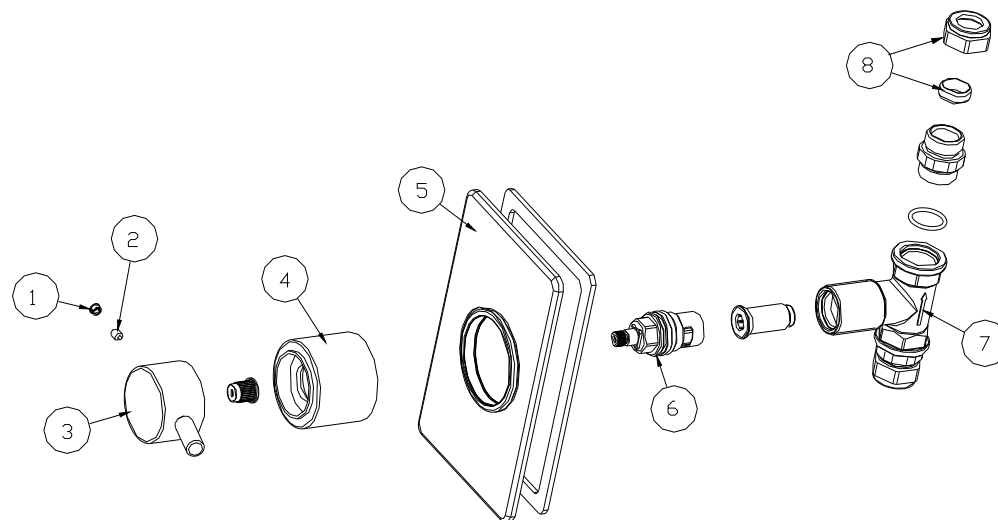
7. Replace handle, tighten grub screw and screw in lever.

8. See over the page for aftercare instructions.

MAINTENANCE

If the fitting begins to drip:

1. Turn off the water supply.
2. Unscrew lever (1) and loosen grub screw (2).
3. Remove handle (3) and unscrew valve shroud (4).
4. Unscrew valve (6) and carefully clean seating, rubber washer and ceramic disc.
5. Replace valve, shroud and handle and turn on the water supply.
6. Contact our helpline if problem persists.



PLEASE NOTE:

In the unlikely event you find a part missing, please contact our Customer Service helpline on **0844 701 6273** for immediate dispatch of part