

Water SAFETY

WHY DO WE NEED TO LIMIT BATH WATER TEMPERATURES TO 48°C?

Every year around 20 people die and almost 600 are seriously injured from scalds caused by hot water, with children and the elderly most at risk.* The danger of scalding occurs because, in order to prevent the growth of harmful legionella bacteria, hot water must be stored at 60°C or above. However, at this temperature, healthy adult skin can be scalded with third degree burns in only five seconds.

Part G of the building Regulations includes measures to help reduce the number of incidences of scalding by requiring that all baths in new dwellings have a device fitted that limits the temperature to a maximum of 48°C (46°C + / - 2°C). This is considered a safer temperature for adults and will help prevent these unnecessary deaths or injuries.

Comply without changing your existing specification

A thermostatic under bath blending valve can be used with any bath filler, tap or bath shower mixer so there is no need to change the architecture of the current specification.

While the introduction of thermostatic controls to bath outlets in Part G only covers new dwellings, Bristan advises that thermostatic bath fillers, bath shower mixers or mixing valves should be installed as standard practice for any bathroom refurbishment.

What is the best way of limiting bath water temperatures?

Bristan offers a range of thermostatic bath fillers and bath shower mixers which limit temperatures to below the required maximum of 48°C, to help you comply with requirements of Part G.

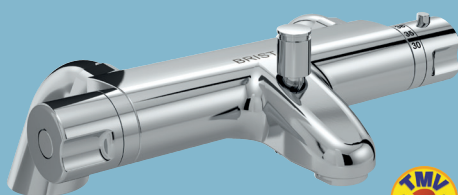
Bristan's thermostatic bath fillers and bath shower mixers are all dual control mixers allowing the on/off function to be operated with one handle and the required water temperature to be selected with the other. All have a built-in thermostat which is as close to the outlet as possible as preferred by Part G and a fixed maximum outlet temperature of 46°C allowing for a + / - 2°C tolerance. Most models also have a safety stop pre-set to 38°C for even safer bathing.

Our Assure and Design Utility Bath Shower Mixers are also TMV2 rated for improved thermal performance and additional user safety.



Artisan Thermostatic Bath Filler Chrome

AR2 THBF C



Assure TMV2 Thermostatic Bath Shower Mixer

AS2 THBSM C



Design Utility Lever TMV2 Thermostatic Bath Shower Mixer

DUL3 THBSM C

* Bathroom Manufacturers Association - based on 2010 statistics

Why CHOOSE BRISTAN?



THERMOSTATIC BATH SHOWER MIXERS

Guarding against scalding, especially in properties that may be home to vulnerable groups such as young children and the elderly, is a hugely important consideration. Our thermostatic bath shower mixers guarantee water is always dispensed at a safe temperature to protect residents and provide compliance with Part G of the building regulations.



EASYFIT TAPS

Our unique, patented Easyfit system makes installation fast, accurate and simple. Featuring flexible inlets for easy connection to the hot and cold supply plus push-on fittings for the tap body, it saves time in new build and refurbishment, while allowing plenty of room for tiling and sealing to be completed.



JOY CARE ELECTRIC SHOWER

Our BEAB accredited Joy Care shower range includes a number of features to make showering safer and more comfortable for those living in assisted accommodation or adapted Affordable Housing. Anti-scalding thermostatic controls, large, clear control graphics and audible signals for temperature setting changes all help the less mobile enjoy more independent living either in their own homes or as part of a multi-generational home.

GUARANTEE

Our chrome brassware products and Joy Care shower carry a comprehensive guarantee of up to five years on parts and one year on fitting. There are also options to extend our standard guarantees.

QUALITY

We perform rigorous testing to every product to ensure they meet British standards and regulations.

AVAILABILITY

Our Bristan Express next day delivery service is reliable ensuring you get what you need, when you need it.