

# Z2 1/2 C

## COMMERCIAL Tap Range Single Basin Soft Touch Timed Flow Tap Chrome



### Features:

- Timed shut off to meet BS EN 816
- Soft touch easy to use mechanism
- Supplied with both hot and cold indices
- Supplied with 5 L/min flow regulator
- Operates at a minimum pressure of 0.5 bar

### Product Certifications:



WRAS Cert. Number: 250103009  
WRAS Expiry Date: 31/01/2030



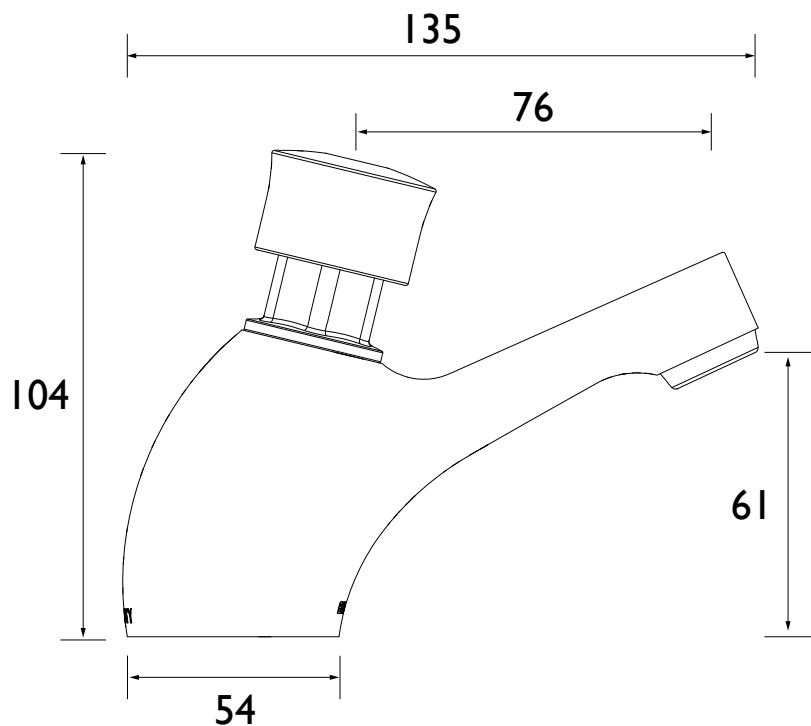
For more products, visit our website:  
<http://www.bristan.com>



### Specification

<b>Product Type:</b>	Bathroom Tap
<b>Main Construction Material:</b>	Brass
<b>Mount Type:</b>	Deck Mounted
<b>Handle Type:</b>	Push Button
<b>Connection Inlet:</b>	1/2" BSP
<b>Connection Outlet:</b>	M20 Flow Straightener
<b>Number of Tap Holes:</b>	1
<b>Valve/Cartridge Type:</b>	Self Closing Valve
<b>Plumbing System Requirements:</b>	Suitable for all plumbing systems
<b>Minimum Dynamic Pressure:</b>	0.5 Bar
<b>Maximum Dynamic Pressure:</b>	5.0 Bar
<b>Maximum Hot Water Temperature: °C</b>	65
<b>Maximum Static Pressure: (bar)</b>	10
<b>Flow Type:</b>	Single Flow
<b>Isolation Included:</b>	No

### Dimensions (measurements in mm)



### Flow Rates (l/min)

System Pressure (bar)	0.5	1	2	3	4	5
Z2 1/2 C	2.5	3.6	5.0	6.2	7.1	7.9

TECHNICAL  
DATA  
SHEET



**BRISTAN**

D16